

# Local Market Update

A RESEARCH TOOL PROVIDED BY THE REALTOR® ASSOCIATION OF THE SIOUX EMPIRE



## City of Sioux Falls

**- 25.0%**

Change in  
New Listings

**- 6.9%**

Change in  
Closed Sales

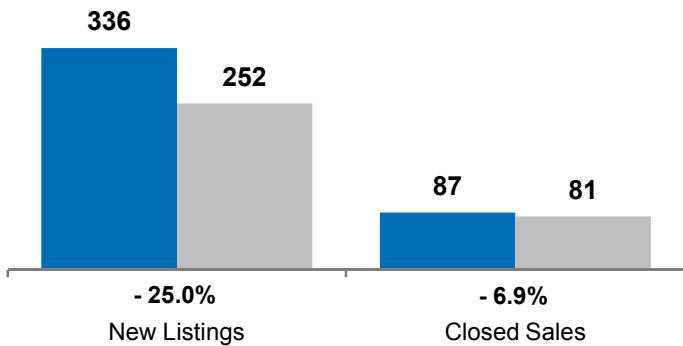
**- 4.2%**

Change in  
Median Sales Price

	January			Year to Date		
	2010	2011	+/-	2010	2011	+/-
New Listings	336	252	- 25.0%	336	252	- 25.0%
Closed Sales	87	81	- 6.9%	87	81	- 6.9%
Median Sales Price*	\$146,000	<b>\$139,900</b>	- 4.2%	\$146,000	<b>\$139,900</b>	- 4.2%
Average Sales Price*	\$175,724	<b>\$167,616</b>	- 4.6%	\$175,724	<b>\$167,616</b>	- 4.6%
Percent of Original List Price Received*	94.5%	<b>92.1%</b>	- 2.5%	94.5%	<b>92.1%</b>	- 2.5%
Average Days on Market Until Sale	89	<b>106</b>	+ 19.1%	89	<b>106</b>	+ 19.1%
Inventory of Homes for Sale	1,142	<b>1,083</b>	- 5.2%	--	--	--
Months Supply of Inventory	5.8	<b>6.4</b>	+ 9.3%	--	--	--

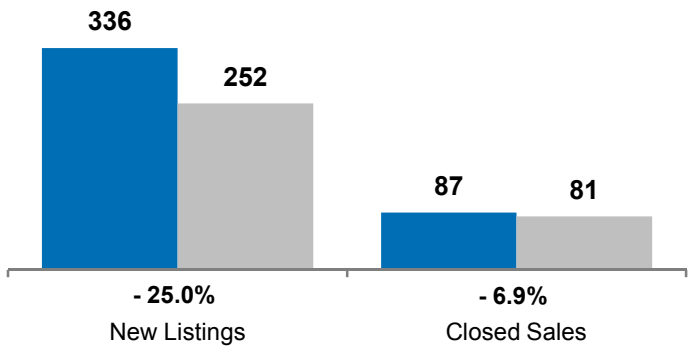
### January

■ 2010 ■ 2011

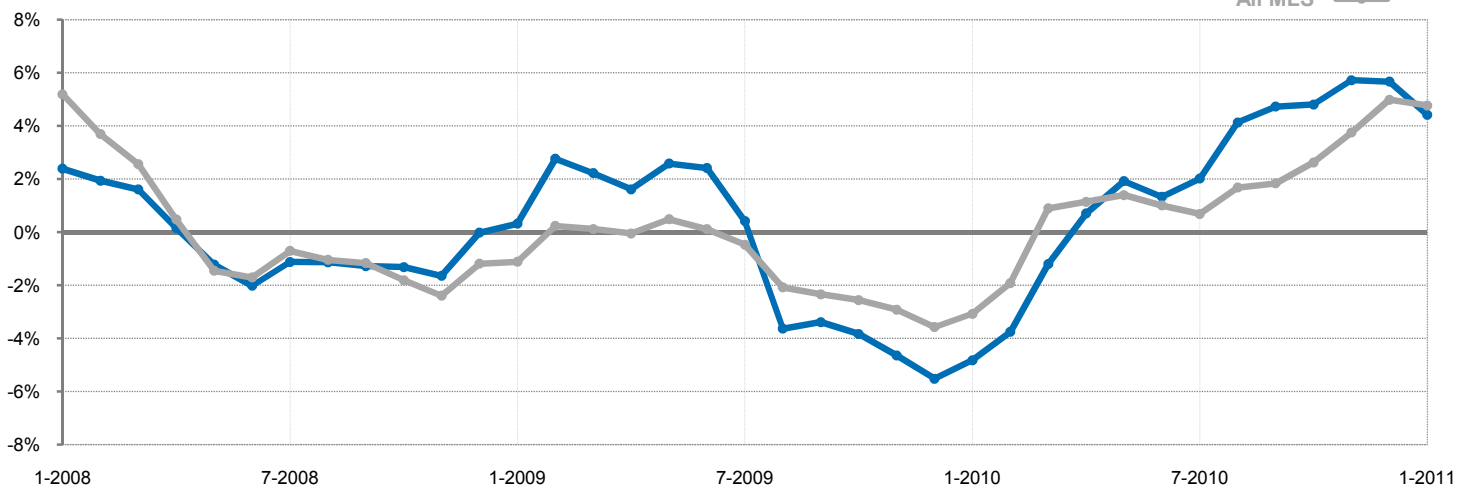


### Year to Date

■ 2010 ■ 2011



### Change in Median Sales Price 6-Month Smoothed Average†



\* Does not account for list prices from any previous listing contracts or seller concessions.

† This chart uses a rolling 6-months of average change in Median Sales Price to account for small sample size.

© 2011 10K Research and Marketing. All data from RASE Multiple Listing Service. | Some figures are for one month worth of activity and can look extreme due to small sample size.