

Local Market Update – February 2011

A RESEARCH TOOL PROVIDED BY THE REALTOR® ASSOCIATION OF THE SIOUX EMPIRE, INC.



Dell Rapids

+ 250.0%

--

--

Change in
New Listings

Change in
Closed Sales

Change in
Median Sales Price

February

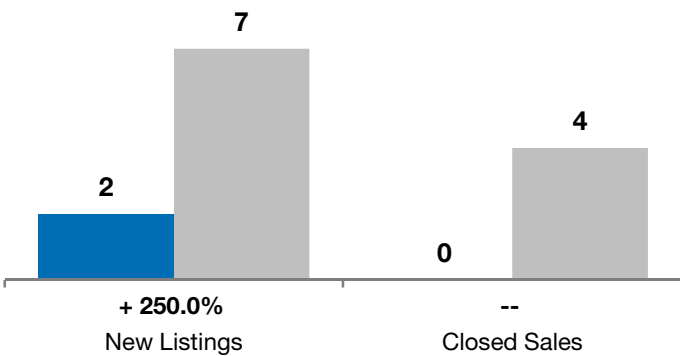
Year to Date

	2010	2011	+ / -	2010	2011	+ / -
New Listings	2	7	+ 250.0%	11	11	0.0%
Closed Sales	0	4	--	2	8	+ 300.0%
Median Sales Price*	\$0	\$63,500	--	\$105,200	\$125,000	+ 18.8%
Average Sales Price*	\$0	\$104,417	--	\$105,200	\$123,321	+ 17.2%
Percent of Original List Price Received*	0.0%	88.0%	--	95.9%	91.2%	- 4.9%
Average Days on Market Until Sale	0	98	--	159	120	- 24.3%
Inventory of Homes for Sale	39	33	- 15.4%	--	--	--
Months Supply of Inventory	7.0	7.6	+ 9.0%	--	--	--

* Does not account for list prices from any previous listing contracts or seller concessions. | Activity for one month can sometimes look extreme due to small sample size.

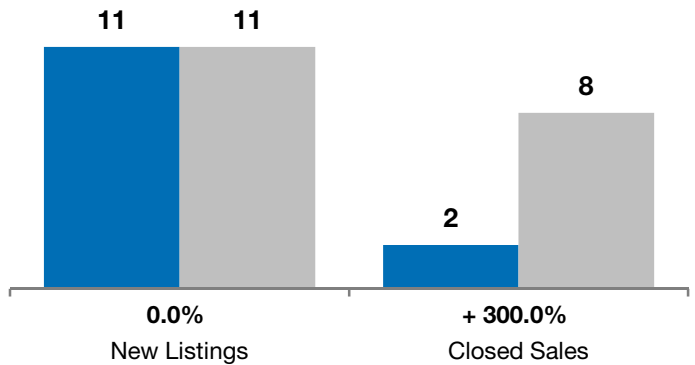
February

■ 2010 ■ 2011

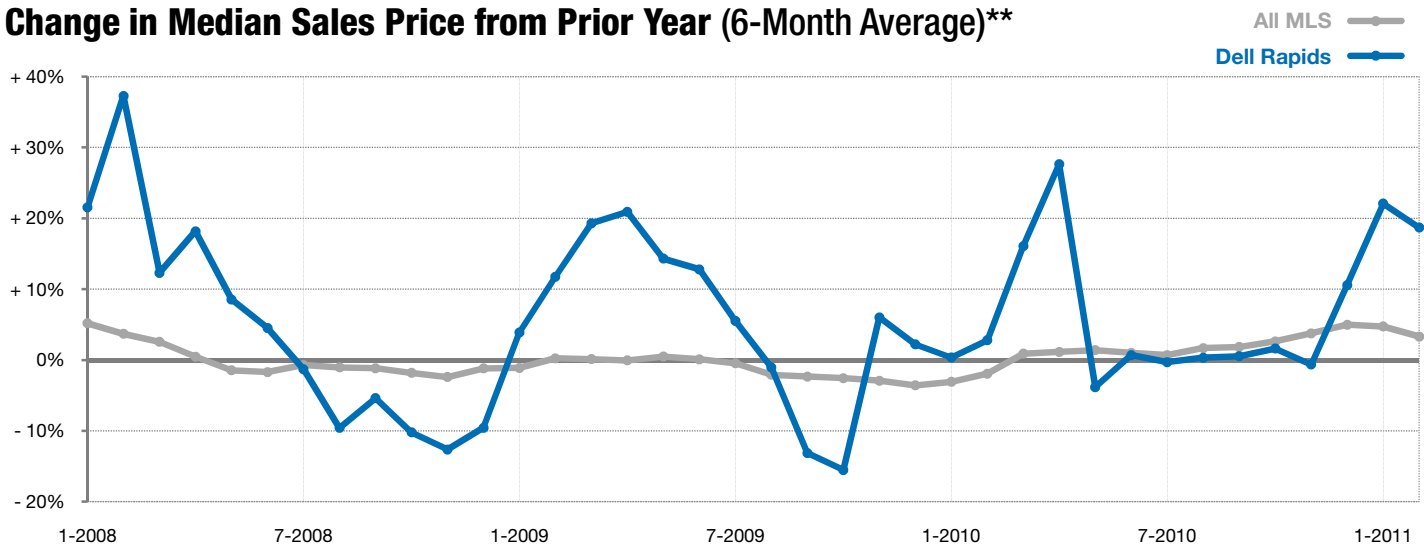


Year to Date

■ 2010 ■ 2011



Change in Median Sales Price from Prior Year (6-Month Average)**



** Each dot represents the change in median sales price from the prior year using a 6-month weighted average. This means that each of the 6 months used in a dot are proportioned according to their share of sales during that period. | All data from RASE Multiple Listing Service. Powered by 10K Research and Marketing.