

Local Market Update – February 2011

A RESEARCH TOOL PROVIDED BY THE REALTOR® ASSOCIATION OF THE SIOUX EMPIRE, INC.



Hartford

- 14.3% **+ 50.0%** **+ 64.8%**

Change in
New Listings

Change in
Closed Sales

Change in
Median Sales Price

	February			Year to Date		
	2010	2011	+ / -	2010	2011	+ / -
New Listings	7	6	- 14.3%	19	9	- 52.6%
Closed Sales	2	3	+ 50.0%	4	8	+ 100.0%
Median Sales Price*	\$99,500	\$164,000	+ 64.8%	\$152,500	\$179,500	+ 17.7%
Average Sales Price*	\$99,500	\$161,333	+ 62.1%	\$147,500	\$197,494	+ 33.9%
Percent of Original List Price Received*	80.3%	96.5%	+ 20.1%	87.9%	92.9%	+ 5.7%
Average Days on Market Until Sale	167	95	- 43.1%	138	132	- 4.1%
Inventory of Homes for Sale	30	28	- 6.7%	--	--	--
Months Supply of Inventory	7.2	9.3	+ 30.1%	--	--	--

* Does not account for list prices from any previous listing contracts or seller concessions. | Activity for one month can sometimes look extreme due to small sample size.

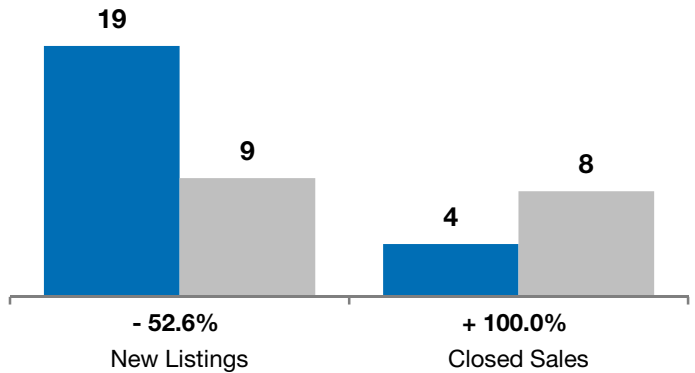
February

■ 2010 ■ 2011

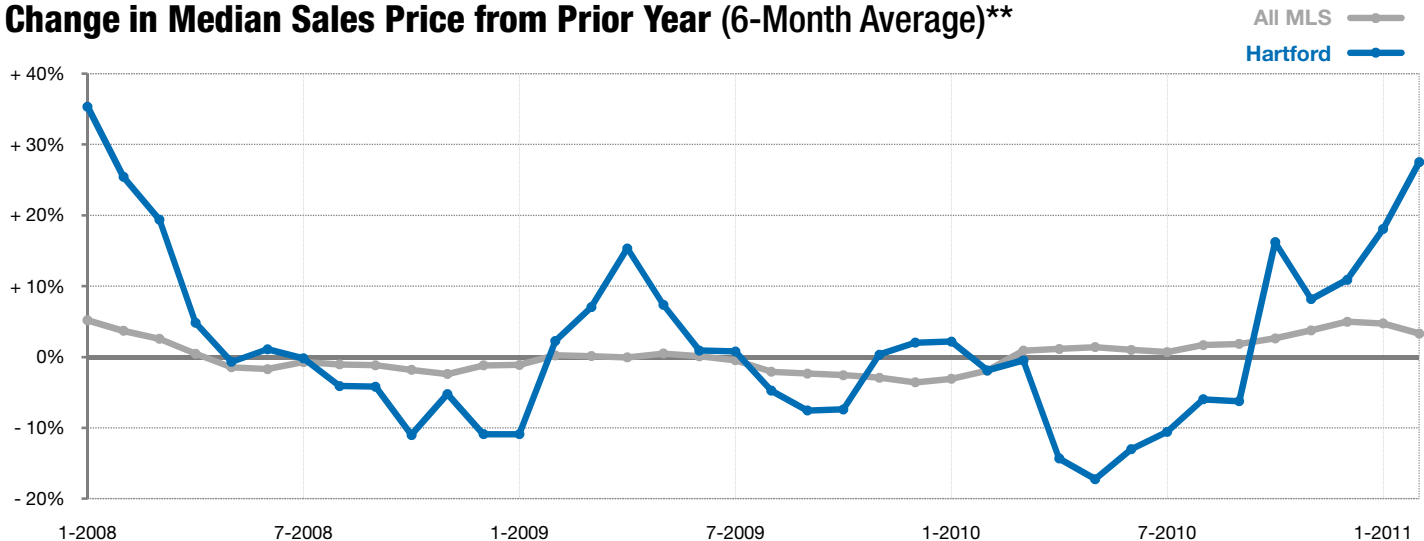


Year to Date

■ 2010 ■ 2011



Change in Median Sales Price from Prior Year (6-Month Average)**



** Each dot represents the change in median sales price from the prior year using a 6-month weighted average. This means that each of the 6 months used in a dot are proportioned according to their share of sales during that period. | All data from RASE Multiple Listing Service. Powered by 10K Research and Marketing.