

# Local Market Update – February 2011

A RESEARCH TOOL PROVIDED BY THE REALTOR® ASSOCIATION OF THE SIOUX EMPIRE, INC.



## Pipestone

**+ 100.0%**

--

--

Change in  
New Listings

Change in  
Closed Sales

Change in  
Median Sales Price

### February

### Year to Date

	2010	2011	+ / -	2010	2011	+ / -
New Listings	1	2	+ 100.0%	4	2	- 50.0%
Closed Sales	0	0	--	0	0	--
Median Sales Price*	\$0	\$0	--	\$0	\$0	--
Average Sales Price*	\$0	\$0	--	\$0	\$0	--
Percent of Original List Price Received*	0.0%	0.0%	--	0.0%	0.0%	--
Average Days on Market Until Sale	0	0	--	0	0	--
Inventory of Homes for Sale	11	8	- 27.3%	--	--	--
Months Supply of Inventory	9.8	5.6	- 42.7%	--	--	--

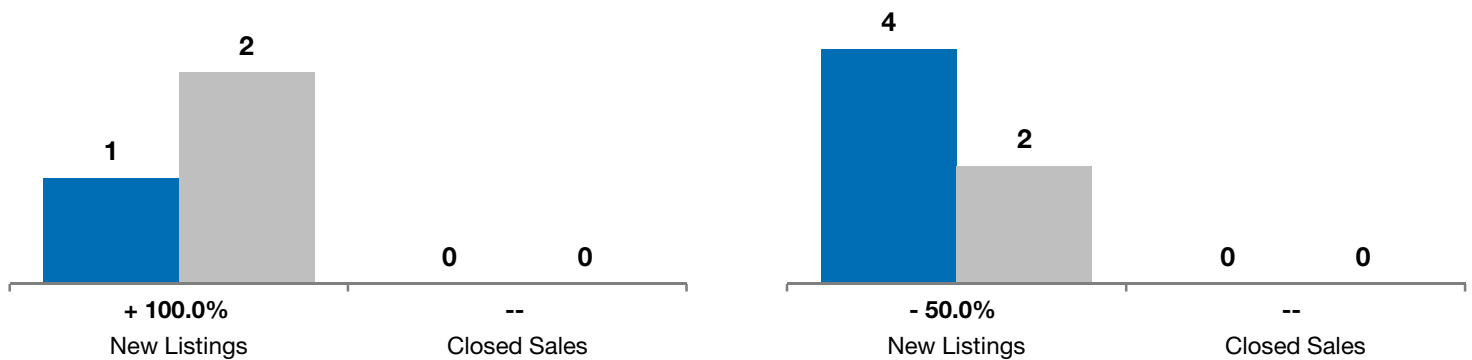
\* Does not account for list prices from any previous listing contracts or seller concessions. | Activity for one month can sometimes look extreme due to small sample size.

### February

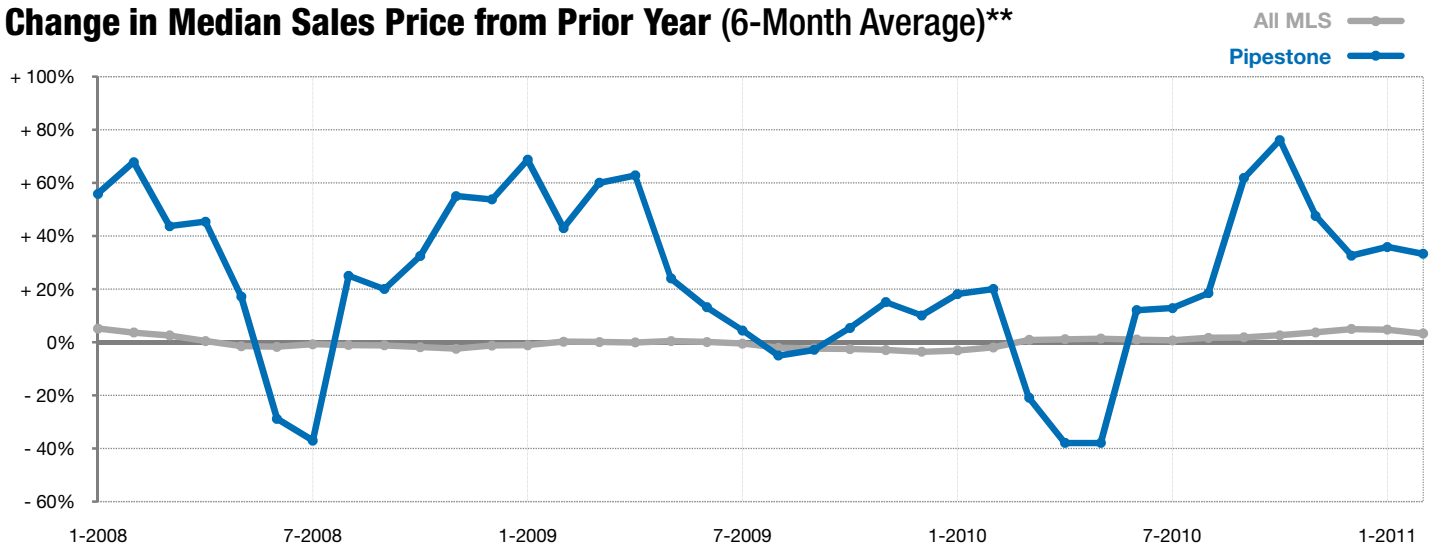
■ 2010 ■ 2011

### Year to Date

■ 2010 ■ 2011



### Change in Median Sales Price from Prior Year (6-Month Average)\*\*



\*\* Each dot represents the change in median sales price from the prior year using a 6-month weighted average. This means that each of the 6 months used in a dot are proportioned according to their share of sales during that period. | All data from RASE Multiple Listing Service. Powered by 10K Research and Marketing.