

Local Market Update – March 2011

A RESEARCH TOOL PROVIDED BY THE REALTOR® ASSOCIATION OF THE SIOUX EMPIRE, INC.



+ 12.5% **- 50.0%** **- 51.0%**

Change in
New Listings

Change in
Closed Sales

Change in
Median Sales Price

Hartford

Minnehaha County, SD

March

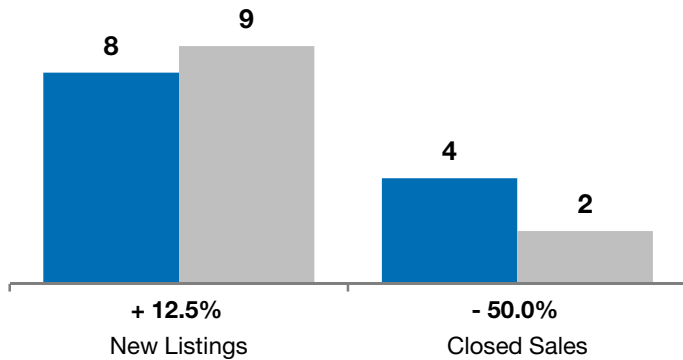
Year to Date

	2010	2011	+ / -	2010	2011	+ / -
New Listings	8	9	+ 12.5%	27	18	- 33.3%
Closed Sales	4	2	- 50.0%	8	10	+ 25.0%
Median Sales Price*	\$169,250	\$83,000	- 51.0%	\$164,750	\$152,500	- 7.4%
Average Sales Price*	\$166,000	\$83,000	- 50.0%	\$156,750	\$174,595	+ 11.4%
Percent of Original List Price Received*	97.3%	89.3%	- 8.2%	92.6%	92.2%	- 0.5%
Average Days on Market Until Sale	75	117	+ 57.0%	106	129	+ 21.6%
Inventory of Homes for Sale	32	30	- 6.3%	--	--	--
Months Supply of Inventory	8.4	9.5	+ 13.0%	--	--	--

* Does not account for list prices from any previous listing contracts or seller concessions. | Activity for one month can sometimes look extreme due to small sample size.

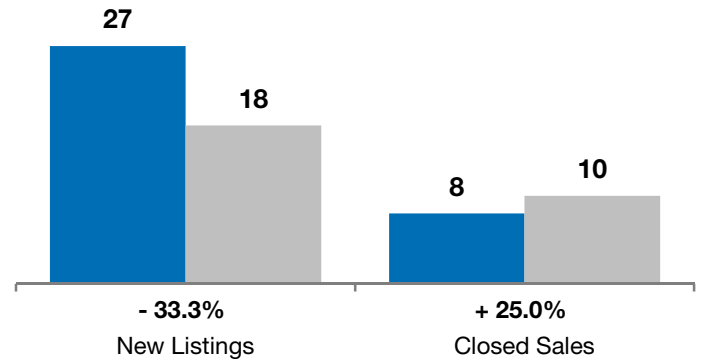
March

■ 2010 ■ 2011

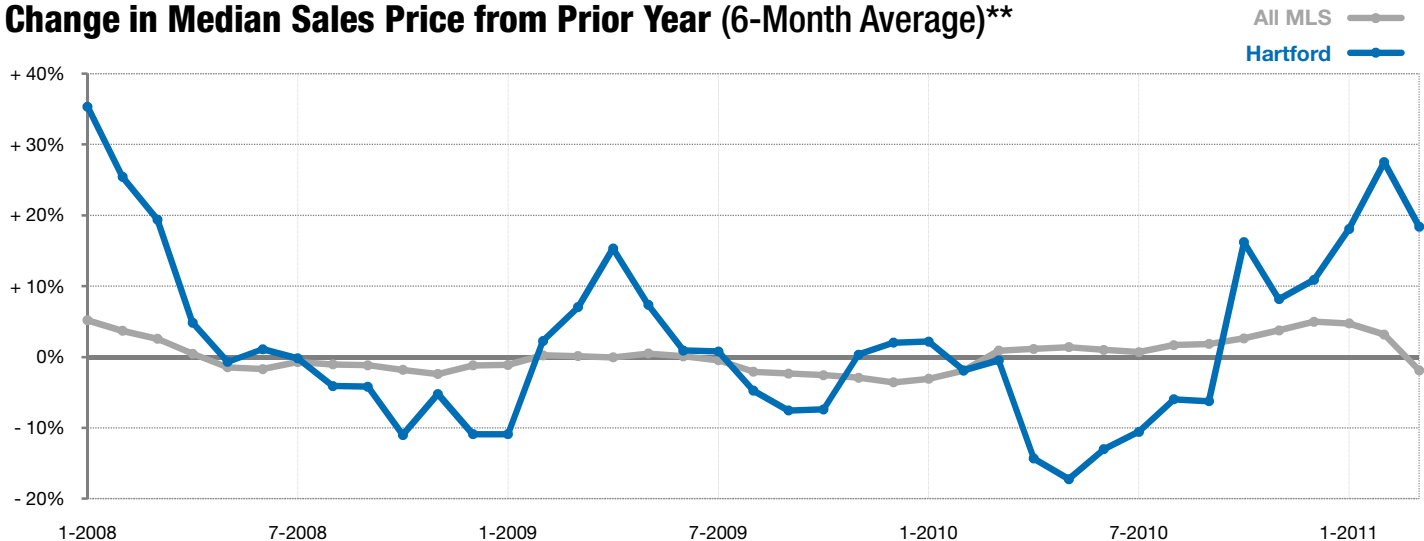


Year to Date

■ 2010 ■ 2011



Change in Median Sales Price from Prior Year (6-Month Average)**



** Each dot represents the change in median sales price from the prior year using a 6-month weighted average. This means that each of the 6 months used in a dot are proportioned according to their share of sales during that period. | All data from RASE Multiple Listing Service. Powered by 10K Research and Marketing.