

Local Market Update – March 2011

A RESEARCH TOOL PROVIDED BY THE REALTOR® ASSOCIATION OF THE SIOUX EMPIRE, INC.



Iowa

Multiple Counties, IA

- 100.0%

--

--

Change in
New Listings

Change in
Closed Sales

Change in
Median Sales Price

March

Year to Date

	2010	2011	+ / -	2010	2011	+ / -
New Listings	2	0	- 100.0%	3	1	- 66.7%
Closed Sales	0	0	--	0	1	--
Median Sales Price*	\$0	\$0	--	\$0	\$30,000	--
Average Sales Price*	\$0	\$0	--	\$0	\$30,000	--
Percent of Original List Price Received*	0.0%	0.0%	--	0.0%	54.5%	--
Average Days on Market Until Sale	0	0	--	0	147	--
Inventory of Homes for Sale	11	4	- 63.6%	--	--	--
Months Supply of Inventory	8.3	3.3	- 59.6%	--	--	--

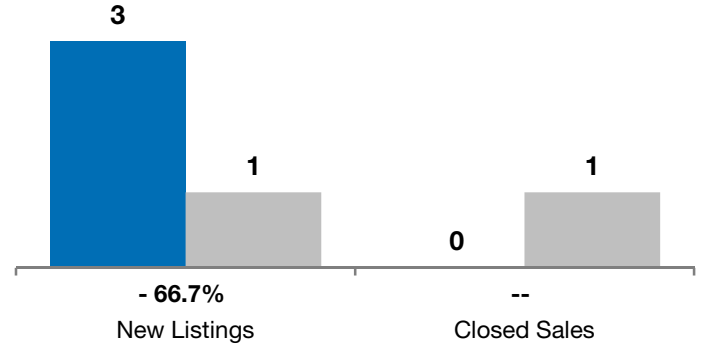
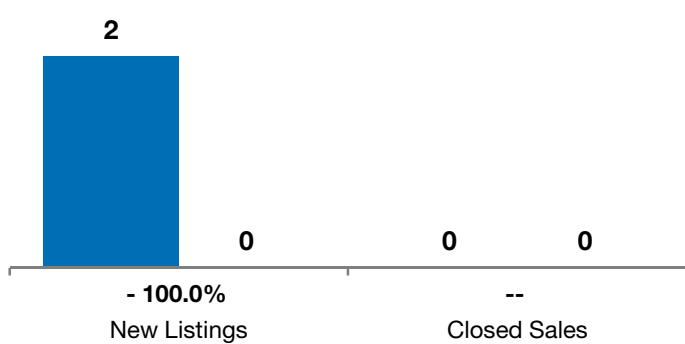
* Does not account for list prices from any previous listing contracts or seller concessions. | Activity for one month can sometimes look extreme due to small sample size.

March

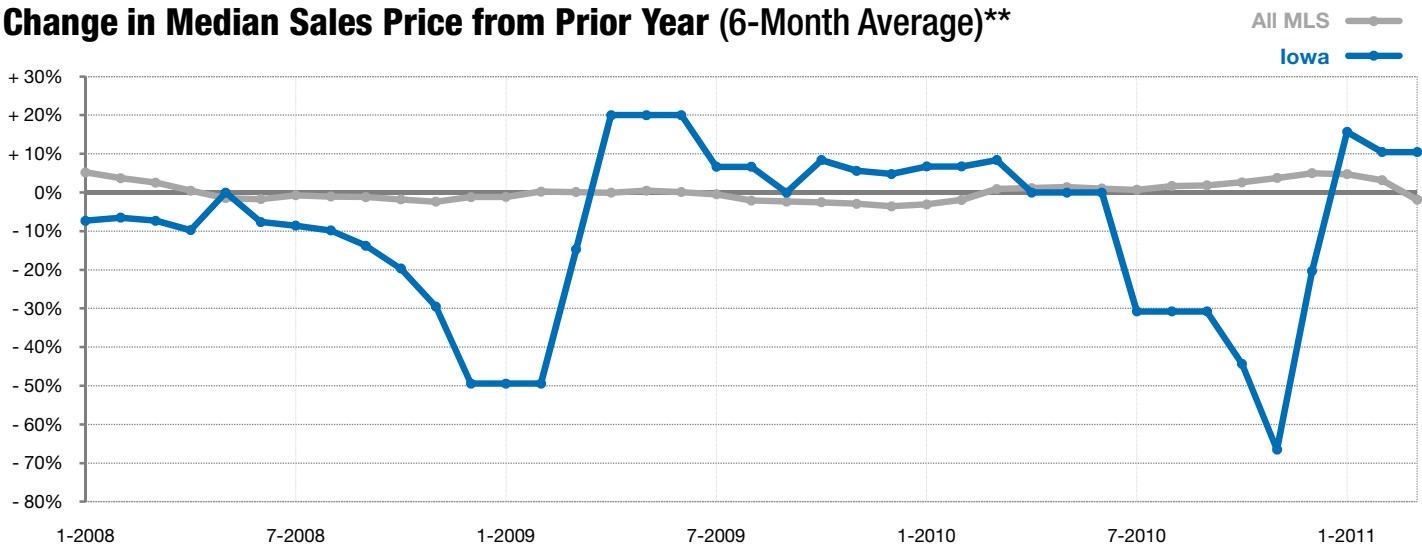
■ 2010 ■ 2011

Year to Date

■ 2010 ■ 2011



Change in Median Sales Price from Prior Year (6-Month Average)**



** Each dot represents the change in median sales price from the prior year using a 6-month weighted average. This means that each of the 6 months used in a dot are proportioned according to their share of sales during that period. | All data from RASE Multiple Listing Service. Powered by 10K Research and Marketing.