

Local Market Update – March 2011

A RESEARCH TOOL PROVIDED BY THE REALTOR® ASSOCIATION OF THE SIOUX EMPIRE, INC.



- 20.0% **+ 100.0%** **- 45.9%**

Change in
New Listings

Change in
Closed Sales

Change in
Median Sales Price

Luverne

Rock County, MN

March

Year to Date

	2010	2011	+ / -	2010	2011	+ / -
New Listings	10	8	- 20.0%	20	18	- 10.0%
Closed Sales	3	6	+ 100.0%	5	11	+ 120.0%
Median Sales Price*	\$120,250	\$65,000	- 45.9%	\$92,900	\$65,000	- 30.0%
Average Sales Price*	\$120,250	\$69,233	- 42.4%	\$87,075	\$76,418	- 12.2%
Percent of Original List Price Received*	94.1%	77.2%	- 18.0%	96.1%	83.1%	- 13.6%
Average Days on Market Until Sale	159	182	+ 14.0%	121	201	+ 67.0%
Inventory of Homes for Sale	43	53	+ 23.3%	--	--	--
Months Supply of Inventory	14.3	13.3	- 7.6%	--	--	--

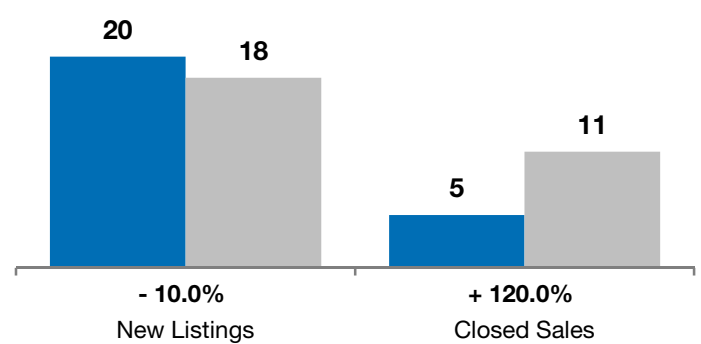
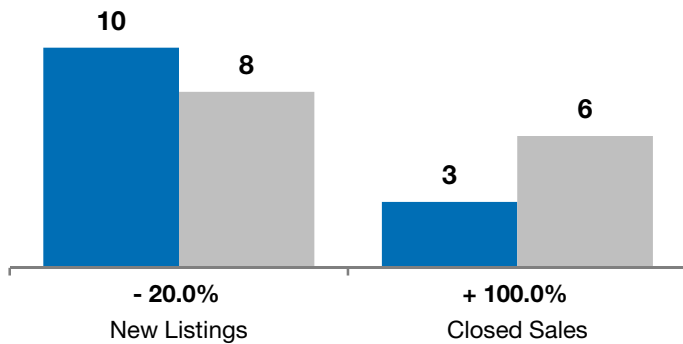
* Does not account for list prices from any previous listing contracts or seller concessions. | Activity for one month can sometimes look extreme due to small sample size.

March

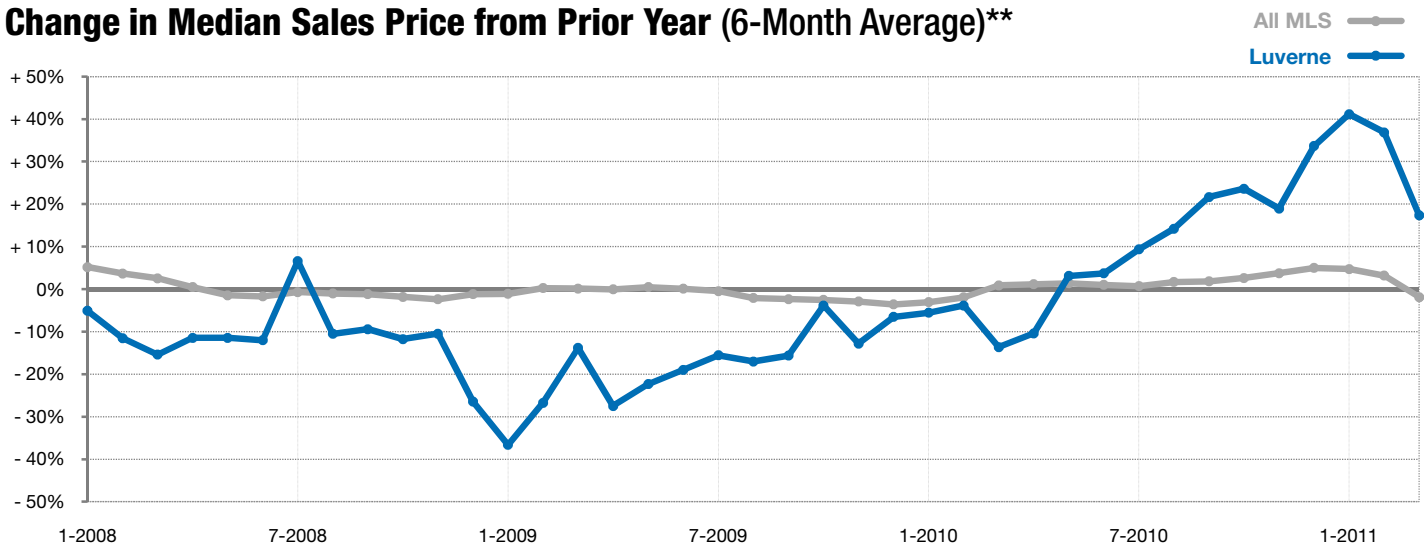
■ 2010 ■ 2011

Year to Date

■ 2010 ■ 2011



Change in Median Sales Price from Prior Year (6-Month Average)**



** Each dot represents the change in median sales price from the prior year using a 6-month weighted average. This means that each of the 6 months used in a dot are proportioned according to their share of sales during that period. | All data from RASE Multiple Listing Service. Powered by 10K Research and Marketing.