

Local Market Update – March 2011

A RESEARCH TOOL PROVIDED BY THE REALTOR® ASSOCIATION OF THE SIOUX EMPIRE, INC.



+ 500.0% **- 100.0%** **- 100.0%**

Change in
New Listings

Change in
Closed Sales

Change in
Median Sales Price

Pipestone

Pipestone County, MN

March

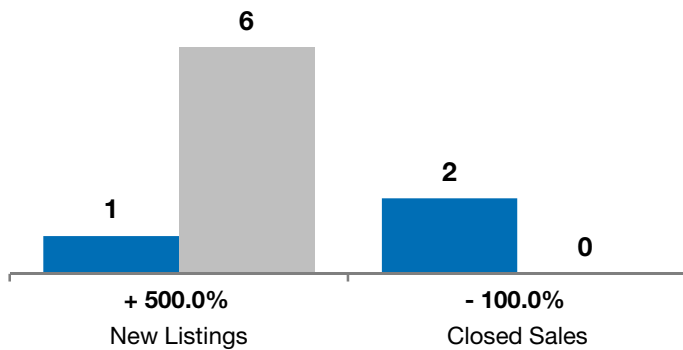
Year to Date

	2010	2011	+ / -	2010	2011	+ / -
New Listings	1	6	+ 500.0%	5	8	+ 60.0%
Closed Sales	2	0	- 100.0%	2	0	- 100.0%
Median Sales Price*	\$23,800	\$0	- 100.0%	\$23,800	\$0	- 100.0%
Average Sales Price*	\$23,800	\$0	- 100.0%	\$23,800	\$0	- 100.0%
Percent of Original List Price Received*	67.1%	0.0%	- 100.0%	67.1%	0.0%	- 100.0%
Average Days on Market Until Sale	341	0	- 100.0%	341	0	- 100.0%
Inventory of Homes for Sale	10	13	+ 30.0%	--	--	--
Months Supply of Inventory	8.8	9.1	+ 4.0%	--	--	--

* Does not account for list prices from any previous listing contracts or seller concessions. | Activity for one month can sometimes look extreme due to small sample size.

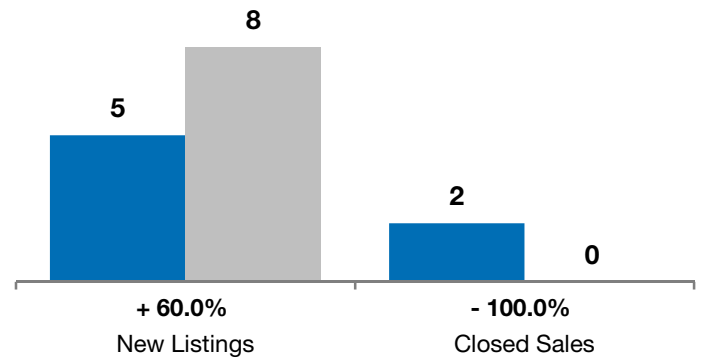
March

■ 2010 ■ 2011

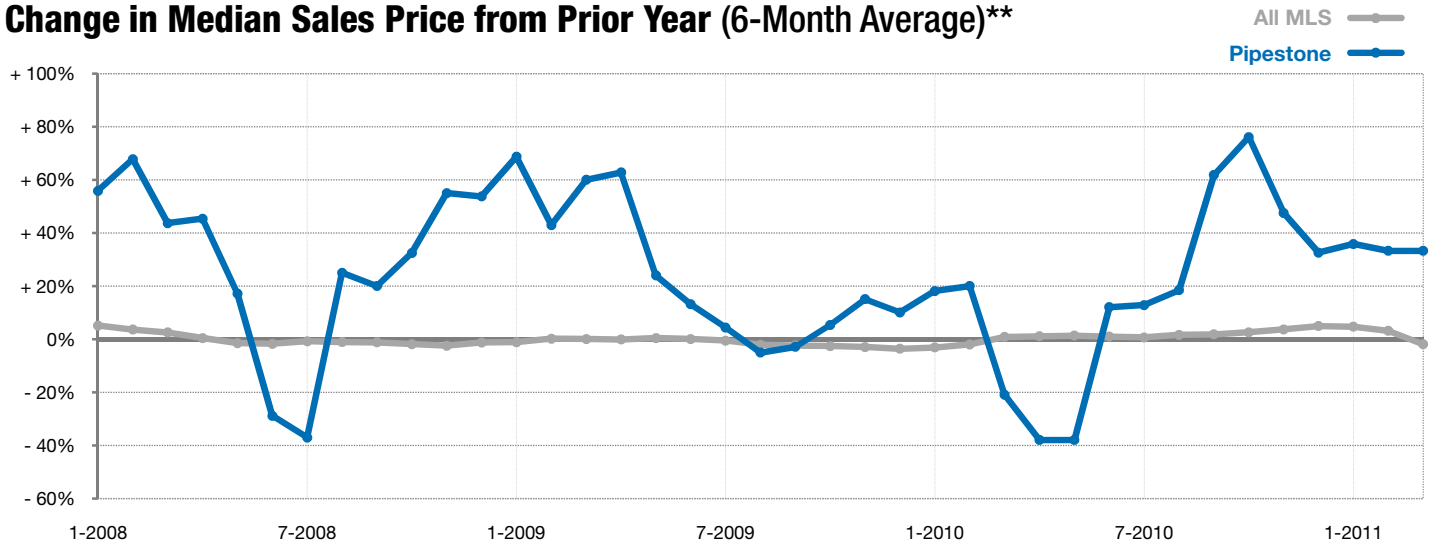


Year to Date

■ 2010 ■ 2011



Change in Median Sales Price from Prior Year (6-Month Average)**



** Each dot represents the change in median sales price from the prior year using a 6-month weighted average. This means that each of the 6 months used in a dot are proportioned according to their share of sales during that period. | All data from RASE Multiple Listing Service. Powered by 10K Research and Marketing.