

Local Market Update – March 2011

A RESEARCH TOOL PROVIDED BY THE REALTOR® ASSOCIATION OF THE SIOUX EMPIRE, INC.



- 100.0%

--

--

Change in
New Listings

Change in
Closed Sales

Change in
Median Sales Price

Valley Springs

Minnehaha County, SD

March

Year to Date

	2010	2011	+ / -	2010	2011	+ / -
New Listings	4	0	- 100.0%	6	6	0.0%
Closed Sales	0	3	--	1	3	+ 200.0%
Median Sales Price*	\$0	\$118,000	--	\$69,900	\$118,000	+ 68.8%
Average Sales Price*	\$0	\$102,167	--	\$69,900	\$102,167	+ 46.2%
Percent of Original List Price Received*	0.0%	85.0%	--	100.0%	85.0%	- 15.0%
Average Days on Market Until Sale	0	33	--	76	33	- 57.0%
Inventory of Homes for Sale	13	9	- 30.8%	--	--	--
Months Supply of Inventory	8.7	3.9	- 54.6%	--	--	--

* Does not account for list prices from any previous listing contracts or seller concessions. | Activity for one month can sometimes look extreme due to small sample size.

March

■ 2010 ■ 2011

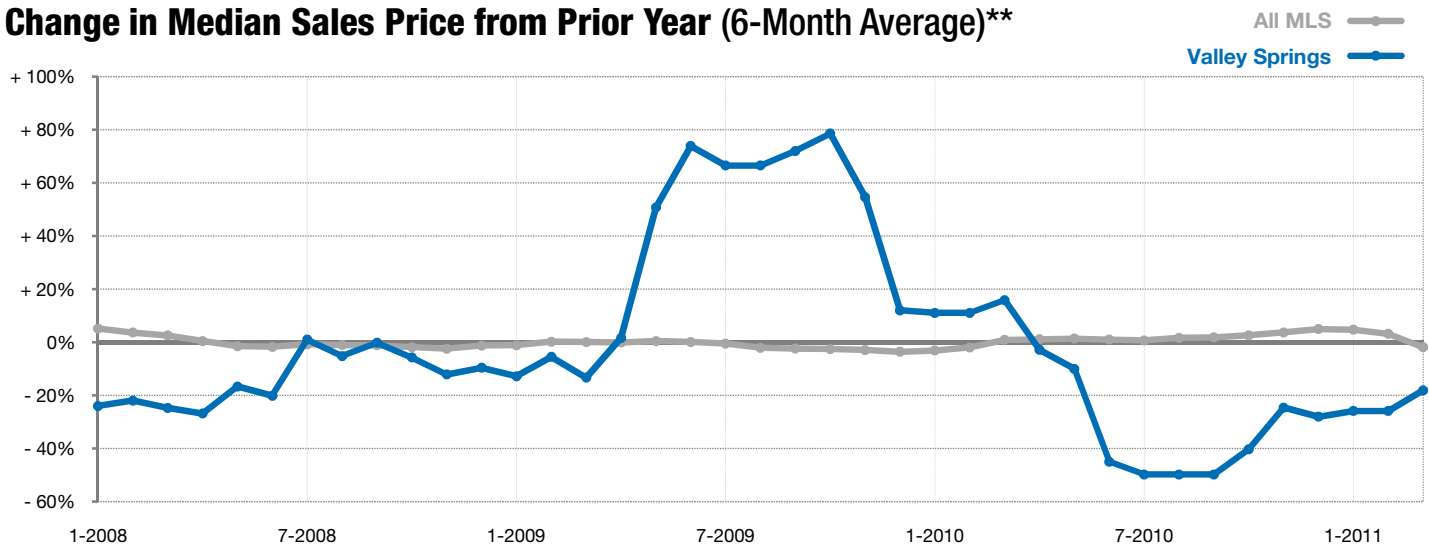


Year to Date

■ 2010 ■ 2011



Change in Median Sales Price from Prior Year (6-Month Average)**



** Each dot represents the change in median sales price from the prior year using a 6-month weighted average. This means that each of the 6 months used in a dot are proportioned according to their share of sales during that period. | All data from RASE Multiple Listing Service. Powered by 10K Research and Marketing.