

Local Market Update – April 2011

A RESEARCH TOOL PROVIDED BY THE REALTOR® ASSOCIATION OF THE SIOUX EMPIRE, INC.



Dell Rapids

- 45.5% **- 83.3%** **+ 9.2%**

Change in
New Listings

Change in
Closed Sales

Change in
Median Sales Price

Minnehaha County, SD

April

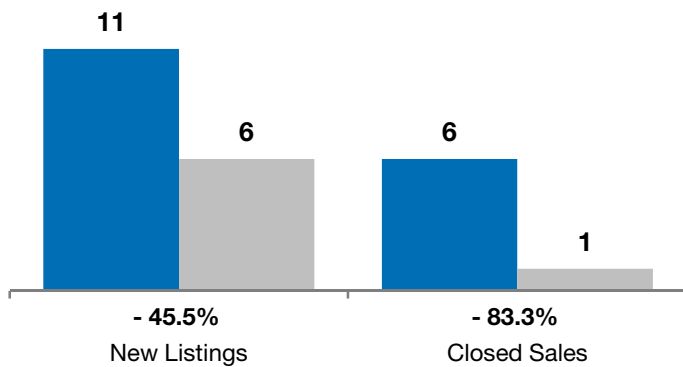
Year to Date

	2010	2011	+ / -	2010	2011	+ / -
New Listings	11	6	- 45.5%	40	27	- 32.5%
Closed Sales	6	1	- 83.3%	14	15	+ 7.1%
Median Sales Price*	\$118,450	\$129,400	+ 9.2%	\$115,450	\$129,700	+ 12.3%
Average Sales Price*	\$129,133	\$129,400	+ 0.2%	\$132,793	\$153,142	+ 15.3%
Percent of Original List Price Received*	91.8%	92.5%	+ 0.8%	92.2%	92.8%	+ 0.6%
Average Days on Market Until Sale	152	229	+ 50.5%	124	105	- 15.6%
Inventory of Homes for Sale	46	38	- 17.4%	--	--	--
Months Supply of Inventory	8.5	9.3	+ 9.6%	--	--	--

* Does not account for list prices from any previous listing contracts or seller concessions. | Activity for one month can sometimes look extreme due to small sample size.

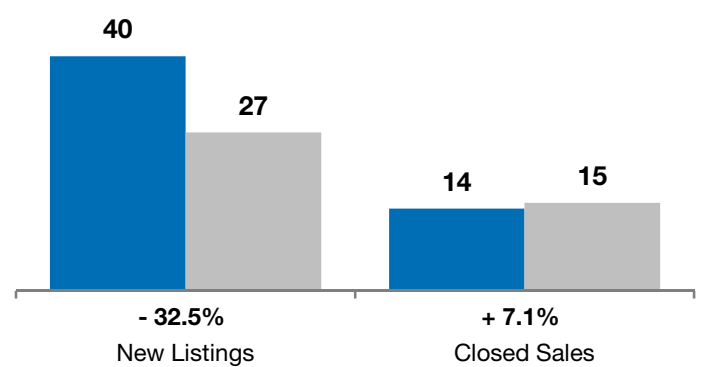
April

■ 2010 ■ 2011

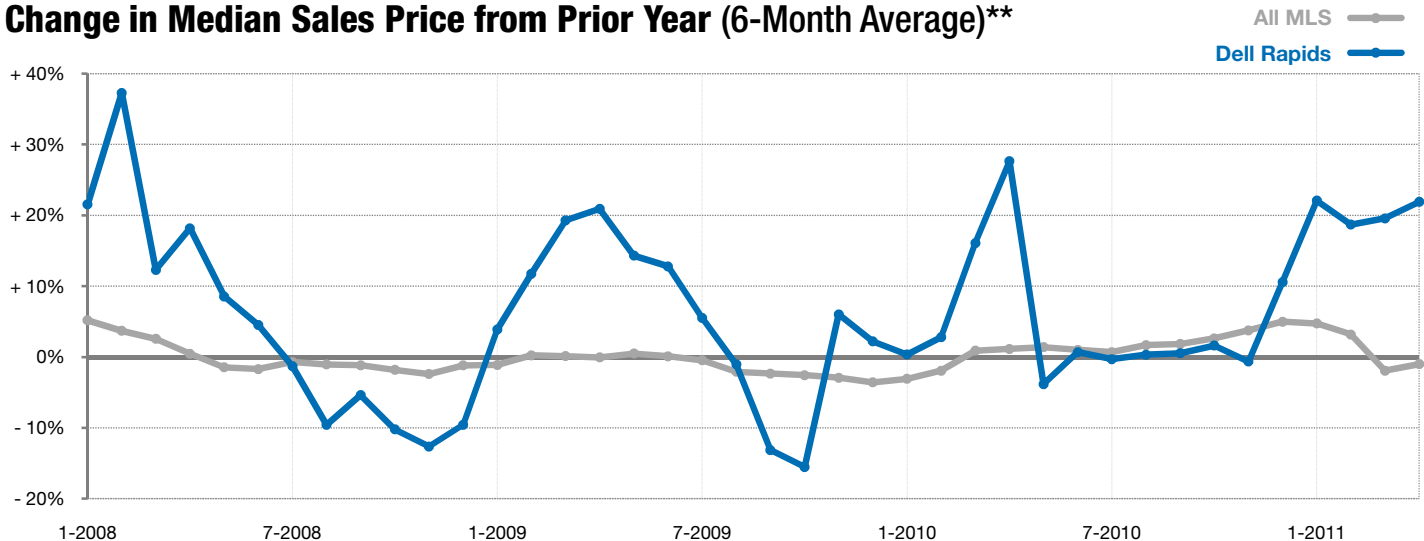


Year to Date

■ 2010 ■ 2011



Change in Median Sales Price from Prior Year (6-Month Average)**



** Each dot represents the change in median sales price from the prior year using a 6-month weighted average. This means that each of the 6 months used in a dot are proportioned according to their share of sales during that period. | All data from RASE Multiple Listing Service. Powered by 10K Research and Marketing.