

# Local Market Update – April 2011

A RESEARCH TOOL PROVIDED BY THE REALTOR® ASSOCIATION OF THE SIOUX EMPIRE, INC.



## Luverne

**- 64.3%**

Change in  
New Listings

**0.0%**

Change in  
Closed Sales

**- 59.6%**

Change in  
Median Sales Price

Rock County, MN

**April**

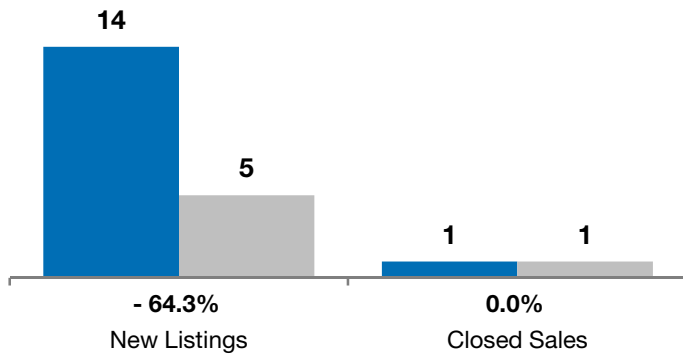
**Year to Date**

	2010	2011	+ / -	2010	2011	+ / -
New Listings	14	5	- 64.3%	34	23	- 32.4%
Closed Sales	1	1	0.0%	6	12	+ 100.0%
Median Sales Price*	\$120,000	<b>\$48,500</b>	- 59.6%	\$107,500	<b>\$65,000</b>	- 39.5%
Average Sales Price*	\$120,000	<b>\$48,500</b>	- 59.6%	\$93,660	<b>\$74,092</b>	- 20.9%
Percent of Original List Price Received*	73.7%	<b>93.4%</b>	+ 26.9%	91.6%	<b>83.9%</b>	- 8.4%
Average Days on Market Until Sale	292	<b>126</b>	- 56.8%	149	<b>195</b>	+ 30.8%
Inventory of Homes for Sale	48	<b>55</b>	+ 14.6%	--	--	--
Months Supply of Inventory	15.6	<b>13.2</b>	- 15.2%	--	--	--

\* Does not account for list prices from any previous listing contracts or seller concessions. | Activity for one month can sometimes look extreme due to small sample size.

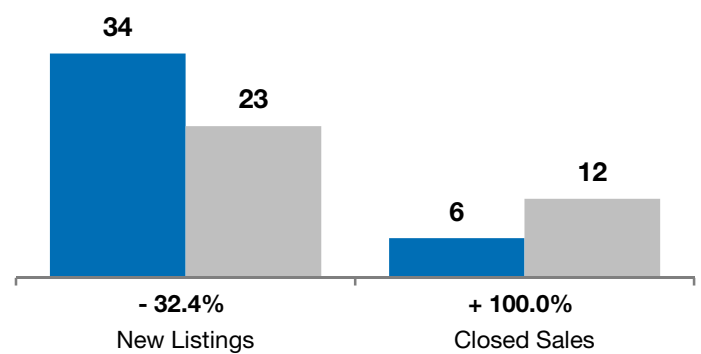
**April**

■ 2010 ■ 2011

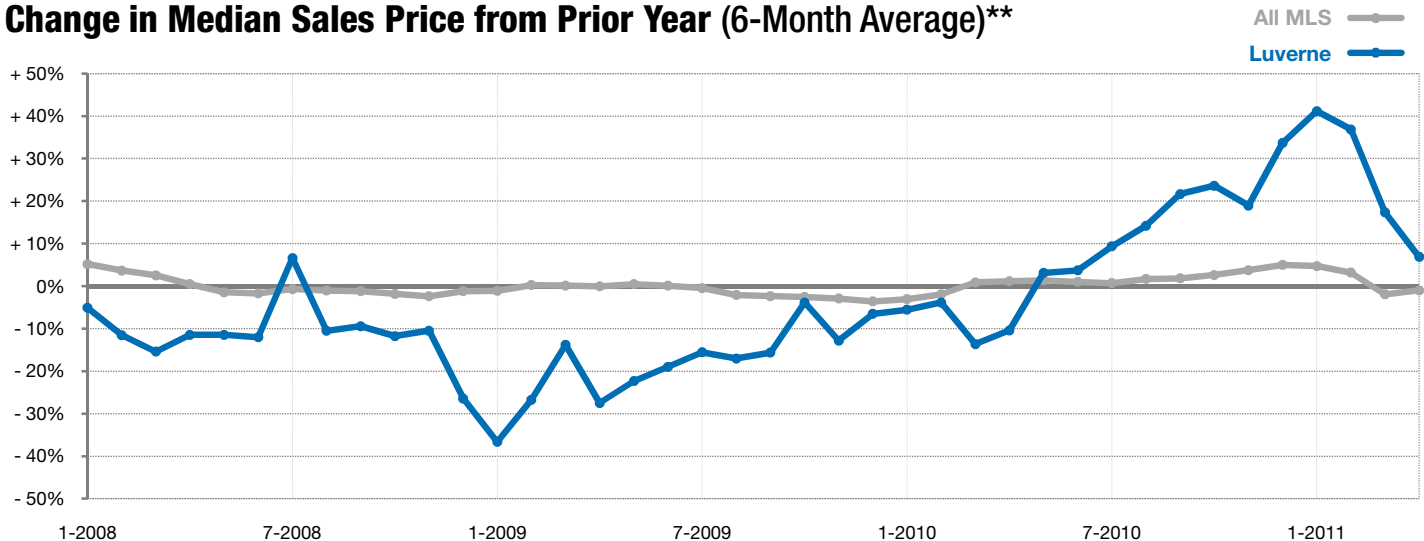


**Year to Date**

■ 2010 ■ 2011



### Change in Median Sales Price from Prior Year (6-Month Average)\*\*



\*\* Each dot represents the change in median sales price from the prior year using a 6-month weighted average. This means that each of the 6 months used in a dot are proportioned according to their share of sales during that period. | All data from RASE Multiple Listing Service. Powered by 10K Research and Marketing.