

Local Market Update – April 2011

A RESEARCH TOOL PROVIDED BY THE REALTOR® ASSOCIATION OF THE SIOUX EMPIRE, INC.



Parker

0.0%

Change in
New Listings

+ 50.0%

Change in
Closed Sales

+ 22.0%

Change in
Median Sales Price

Turner County, SD

April

Year to Date

	2010	2011	+ / -	2010	2011	+ / -
New Listings	8	8	0.0%	20	15	- 25.0%
Closed Sales	2	3	+ 50.0%	4	7	+ 75.0%
Median Sales Price*	\$106,500	\$129,900	+ 22.0%	\$118,900	\$129,900	+ 9.3%
Average Sales Price*	\$106,500	\$169,633	+ 59.3%	\$126,200	\$148,065	+ 17.3%
Percent of Original List Price Received*	97.4%	86.2%	- 11.6%	93.8%	93.2%	- 0.6%
Average Days on Market Until Sale	34	147	+ 338.8%	85	102	+ 20.4%
Inventory of Homes for Sale	21	15	- 28.6%	--	--	--
Months Supply of Inventory	9.2	7.5	- 18.4%	--	--	--

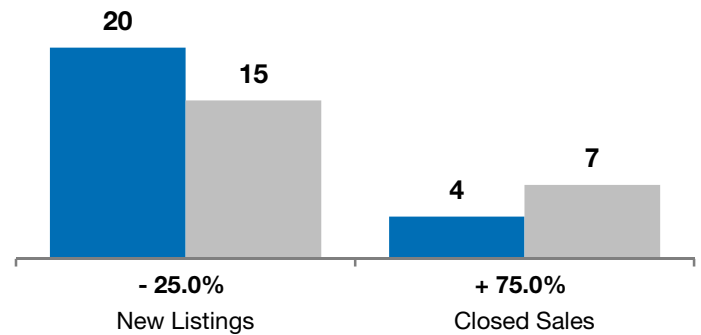
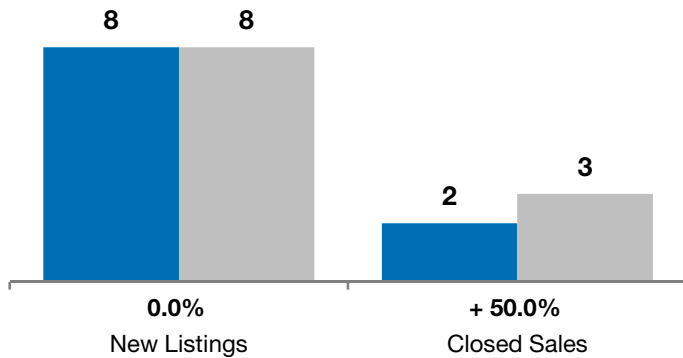
* Does not account for list prices from any previous listing contracts or seller concessions. | Activity for one month can sometimes look extreme due to small sample size.

April

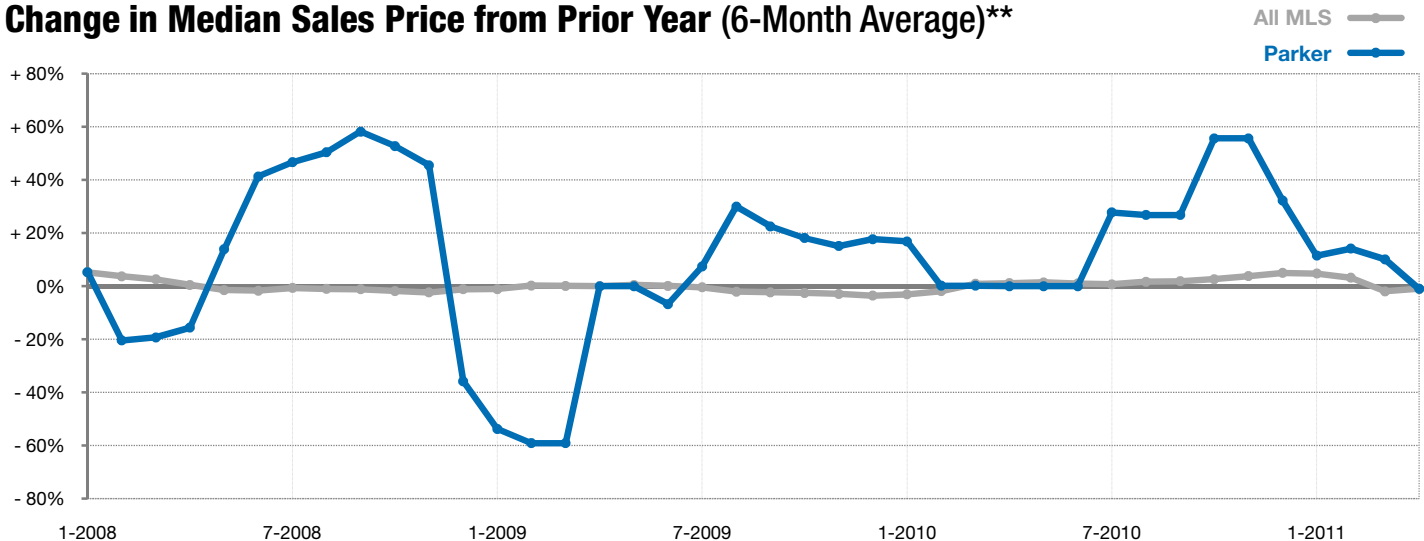
■ 2010 ■ 2011

Year to Date

■ 2010 ■ 2011



Change in Median Sales Price from Prior Year (6-Month Average)**



** Each dot represents the change in median sales price from the prior year using a 6-month weighted average. This means that each of the 6 months used in a dot are proportioned according to their share of sales during that period. | All data from RASE Multiple Listing Service. Powered by 10K Research and Marketing.