

Local Market Update – May 2011

A RESEARCH TOOL PROVIDED BY THE REALTOR® ASSOCIATION OF THE SIOUX EMPIRE, INC.



Baltic

+ 200.0%

Change in
New Listings

0.0%

Change in
Closed Sales

+ 52.0%

Change in
Median Sales Price

Minnehaha County, SD

May

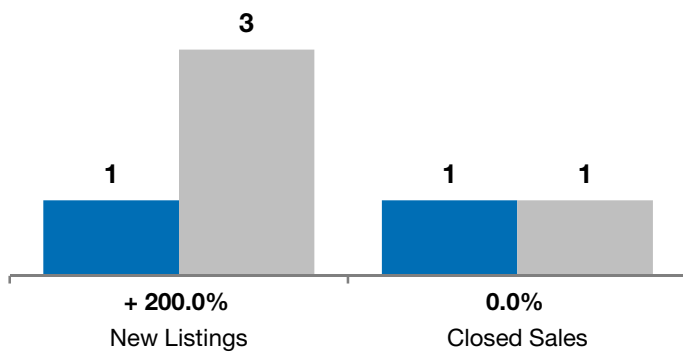
Year to Date

	2010	2011	+ / -	2010	2011	+ / -
New Listings	1	3	+ 200.0%	22	12	- 45.5%
Closed Sales	1	1	0.0%	7	2	- 71.4%
Median Sales Price*	\$134,900	\$205,000	+ 52.0%	\$134,900	\$164,750	+ 22.1%
Average Sales Price*	\$134,900	\$205,000	+ 52.0%	\$120,450	\$164,750	+ 36.8%
Percent of Original List Price Received*	100.0%	103.8%	+ 3.8%	92.5%	99.8%	+ 7.9%
Average Days on Market Until Sale	8	25	+ 212.5%	73	144	+ 97.6%
Inventory of Homes for Sale	17	11	- 35.3%	--	--	--
Months Supply of Inventory	6.2	6.4	+ 2.9%	--	--	--

* Does not account for list prices from any previous listing contracts or seller concessions. | Activity for one month can sometimes look extreme due to small sample size.

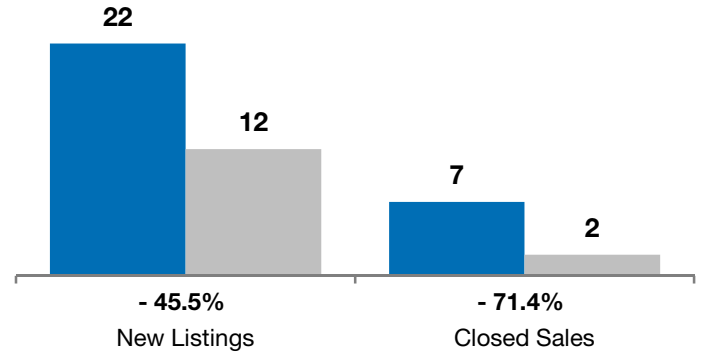
May

■ 2010 ■ 2011

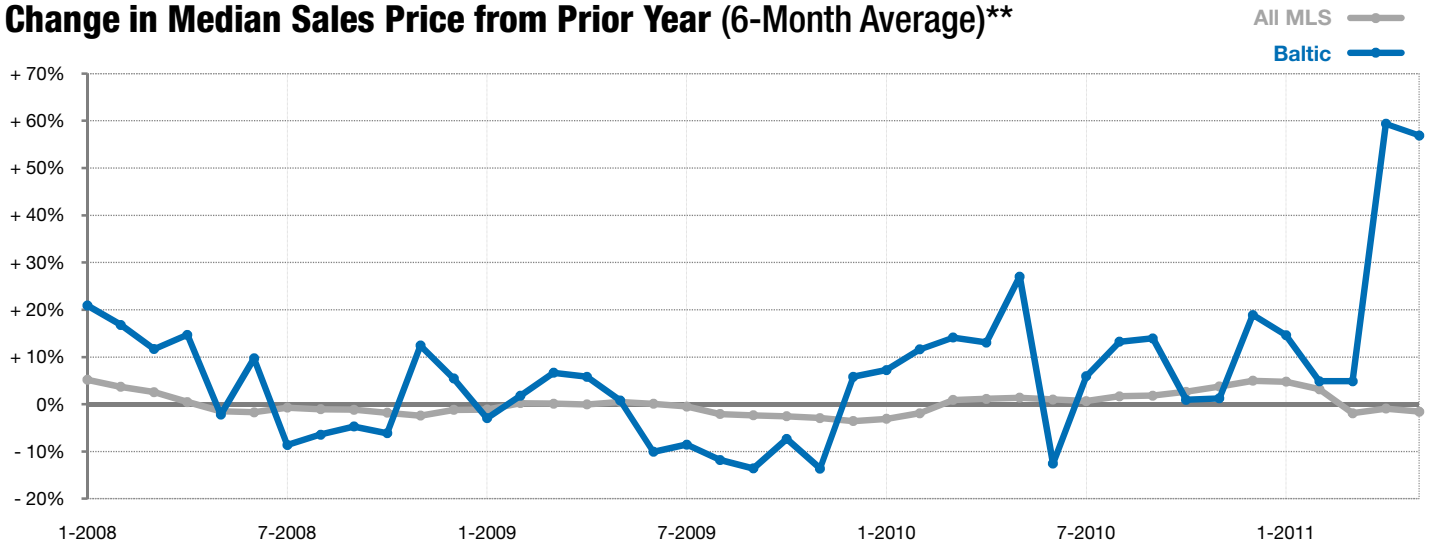


Year to Date

■ 2010 ■ 2011



Change in Median Sales Price from Prior Year (6-Month Average)**



** Each dot represents the change in median sales price from the prior year using a 6-month weighted average. This means that each of the 6 months used in a dot are proportioned according to their share of sales during that period. | All data from RASE Multiple Listing Service. Powered by 10K Research and Marketing.