

Local Market Update – May 2011

A RESEARCH TOOL PROVIDED BY THE REALTOR® ASSOCIATION OF THE SIOUX EMPIRE, INC.



Brandon

- 24.0% **+ 18.2%** **+ 16.9%**

Change in
New Listings

Change in
Closed Sales

Change in
Median Sales Price

Minnehaha County, SD

May

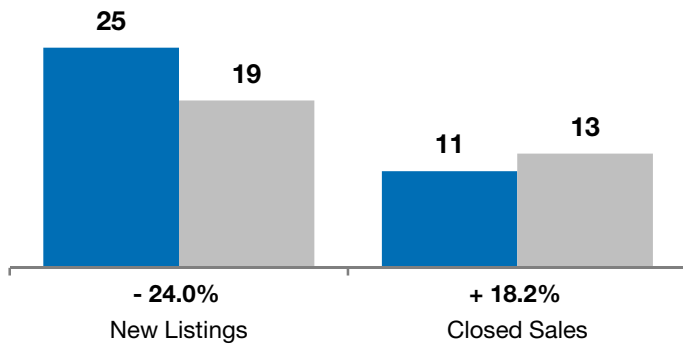
Year to Date

	2010	2011	+ / -	2010	2011	+ / -
New Listings	25	19	- 24.0%	122	112	- 8.2%
Closed Sales	11	13	+ 18.2%	42	57	+ 35.7%
Median Sales Price*	\$160,000	\$187,000	+ 16.9%	\$183,750	\$173,500	- 5.6%
Average Sales Price*	\$177,445	\$201,654	+ 13.6%	\$198,049	\$192,921	- 2.6%
Percent of Original List Price Received*	96.1%	95.0%	- 1.2%	96.0%	95.5%	- 0.5%
Average Days on Market Until Sale	92	79	- 14.8%	99	83	- 16.3%
Inventory of Homes for Sale	95	88	- 7.4%	--	--	--
Months Supply of Inventory	7.7	7.2	- 6.7%	--	--	--

* Does not account for list prices from any previous listing contracts or seller concessions. | Activity for one month can sometimes look extreme due to small sample size.

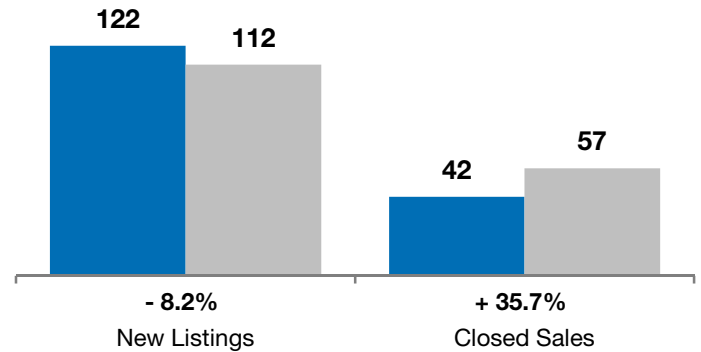
May

■ 2010 ■ 2011

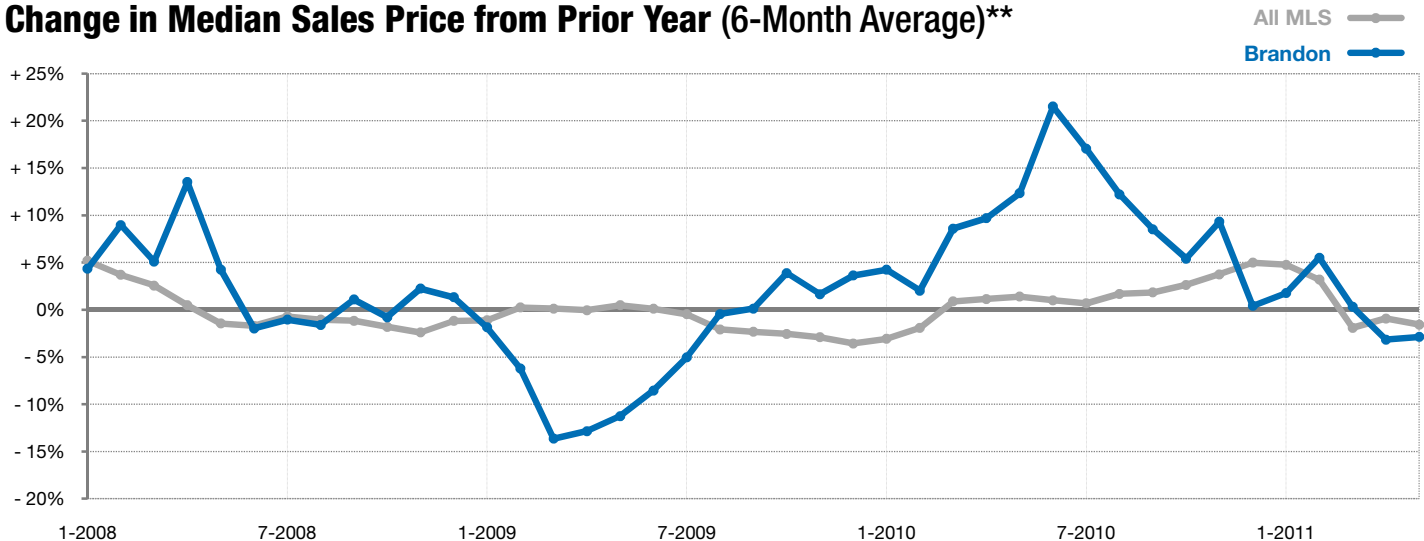


Year to Date

■ 2010 ■ 2011



Change in Median Sales Price from Prior Year (6-Month Average)**



** Each dot represents the change in median sales price from the prior year using a 6-month weighted average. This means that each of the 6 months used in a dot are proportioned according to their share of sales during that period. | All data from RASE Multiple Listing Service. Powered by 10K Research and Marketing.