

Local Market Update – May 2011

A RESEARCH TOOL PROVIDED BY THE REALTOR® ASSOCIATION OF THE SIOUX EMPIRE, INC.



Iowa

+ 50.0%

Change in
New Listings

0.0%

Change in
Closed Sales

- 59.5%

Change in
Median Sales Price

Multiple Counties, IA

May

Year to Date

	2010	2011	+ / -	2010	2011	+ / -
New Listings	2	3	+ 50.0%	9	7	- 22.2%
Closed Sales	1	1	0.0%	2	2	0.0%
Median Sales Price*	\$185,200	\$75,000	- 59.5%	\$167,600	\$52,500	- 68.7%
Average Sales Price*	\$185,200	\$75,000	- 59.5%	\$167,600	\$52,500	- 68.7%
Percent of Original List Price Received*	84.2%	84.3%	+ 0.1%	89.3%	69.4%	- 22.3%
Average Days on Market Until Sale	209	316	+ 51.2%	164	232	+ 41.2%
Inventory of Homes for Sale	12	6	- 50.0%	--	--	--
Months Supply of Inventory	8.0	6.0	- 25.0%	--	--	--

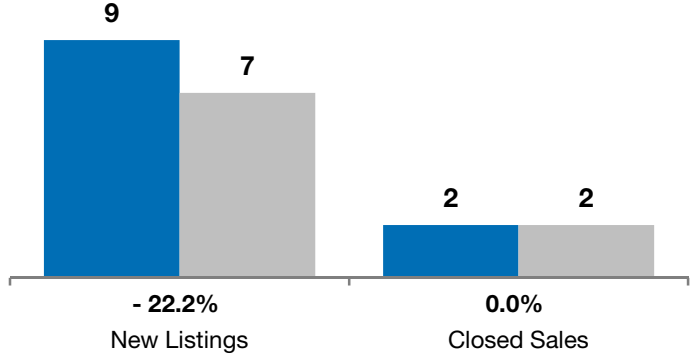
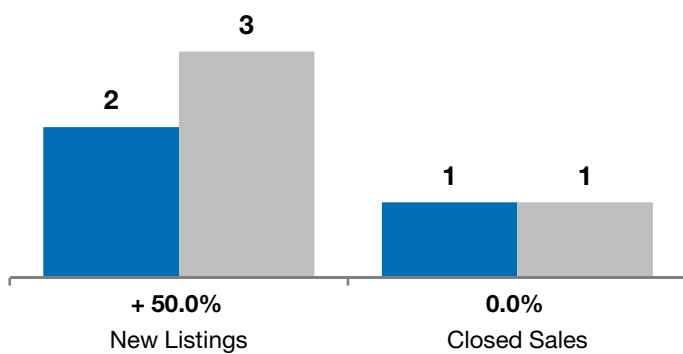
* Does not account for list prices from any previous listing contracts or seller concessions. | Activity for one month can sometimes look extreme due to small sample size.

May

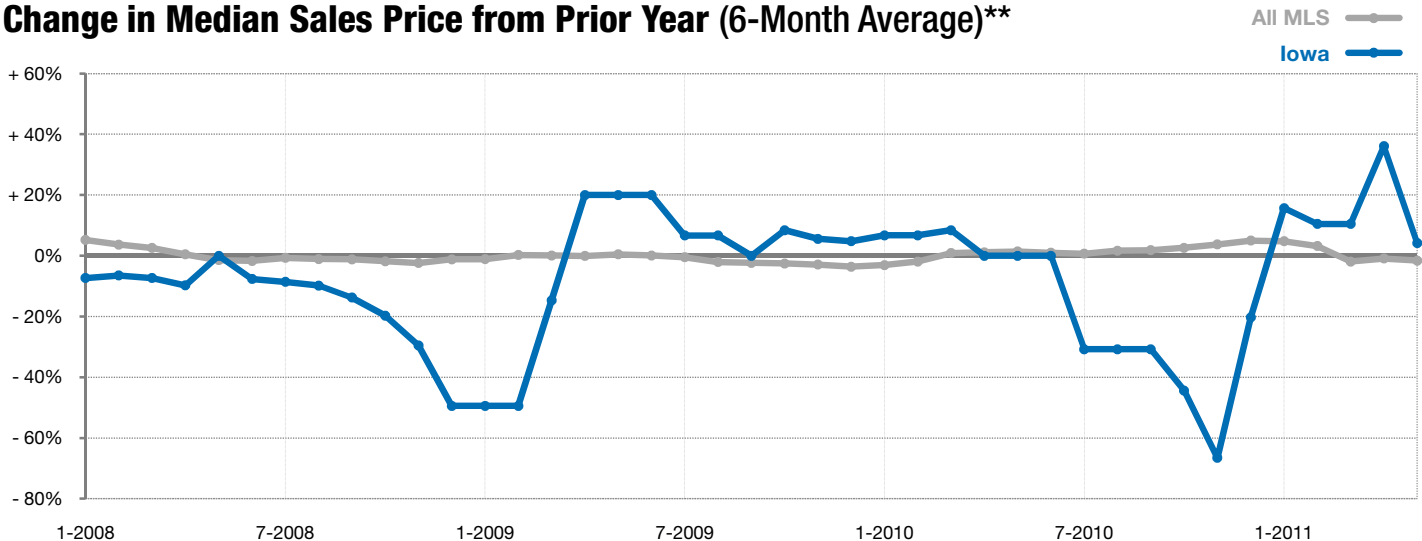
■ 2010 ■ 2011

Year to Date

■ 2010 ■ 2011



Change in Median Sales Price from Prior Year (6-Month Average)**



** Each dot represents the change in median sales price from the prior year using a 6-month weighted average. This means that each of the 6 months used in a dot are proportioned according to their share of sales during that period. | All data from RASE Multiple Listing Service. Powered by 10K Research and Marketing.