

Local Market Update – May 2011

A RESEARCH TOOL PROVIDED BY THE REALTOR® ASSOCIATION OF THE SIOUX EMPIRE, INC.



Luverne

+ 27.3% **- 72.7%** **+ 47.1%**

Change in
New Listings

Change in
Closed Sales

Change in
Median Sales Price

Rock County, MN

May

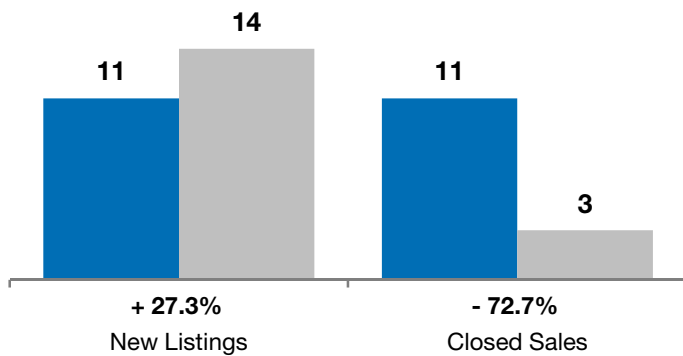
Year to Date

	2010	2011	+ / -	2010	2011	+ / -
New Listings	11	14	+ 27.3%	45	37	- 17.8%
Closed Sales	11	3	- 72.7%	17	15	- 11.8%
Median Sales Price*	\$119,000	\$175,000	+ 47.1%	\$116,500	\$65,000	- 44.2%
Average Sales Price*	\$113,273	\$148,833	+ 31.4%	\$107,144	\$89,040	- 16.9%
Percent of Original List Price Received*	92.9%	88.4%	- 4.8%	92.5%	84.8%	- 8.3%
Average Days on Market Until Sale	83	129	+ 56.2%	106	182	+ 71.3%
Inventory of Homes for Sale	50	60	+ 20.0%	--	--	--
Months Supply of Inventory	14.3	16.4	+ 14.5%	--	--	--

* Does not account for list prices from any previous listing contracts or seller concessions. | Activity for one month can sometimes look extreme due to small sample size.

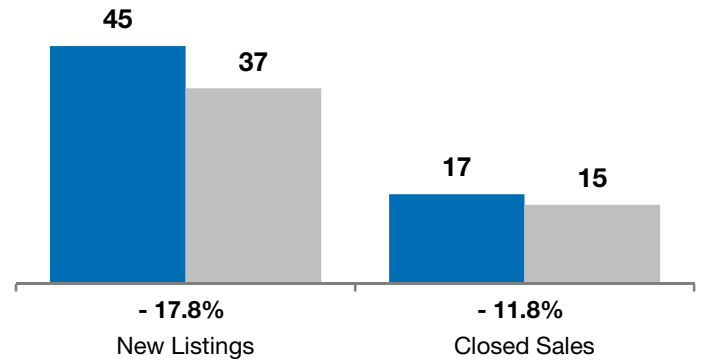
May

■ 2010 ■ 2011

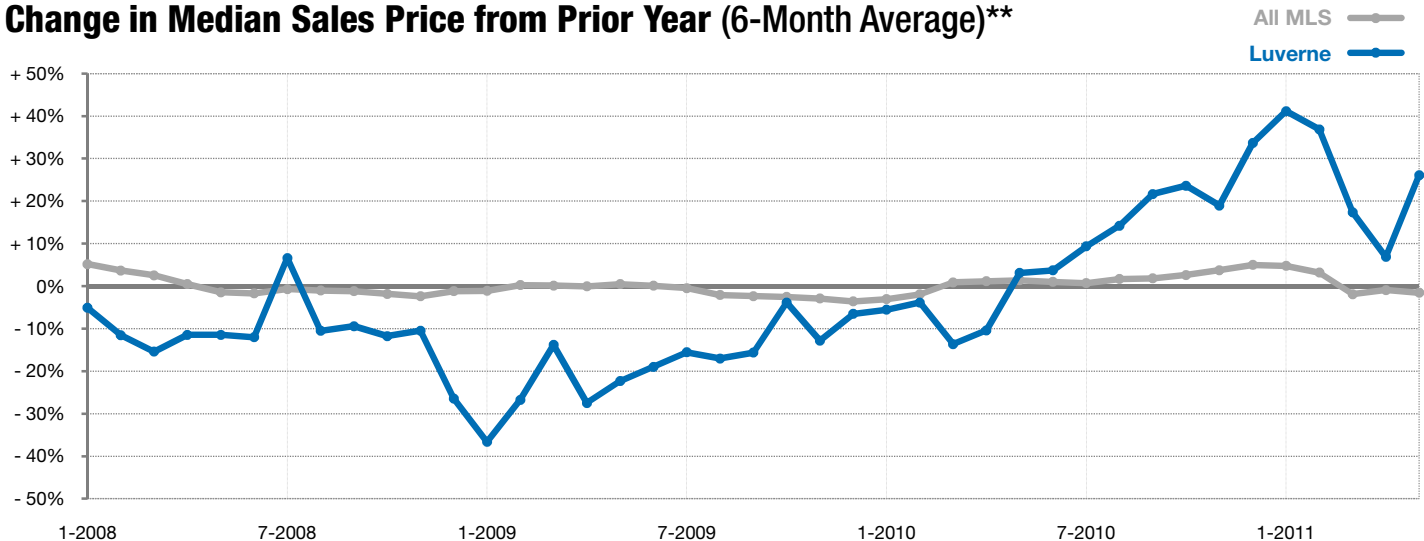


Year to Date

■ 2010 ■ 2011



Change in Median Sales Price from Prior Year (6-Month Average)**



** Each dot represents the change in median sales price from the prior year using a 6-month weighted average. This means that each of the 6 months used in a dot are proportioned according to their share of sales during that period. | All data from RASE Multiple Listing Service. Powered by 10K Research and Marketing.