

Local Market Update – June 2011

A RESEARCH TOOL PROVIDED BY THE REALTOR® ASSOCIATION OF THE SIOUX EMPIRE, INC.



Brandon

+ 22.2% **- 42.9%** **- 29.3%**

Change in
New Listings

Change in
Closed Sales

Change in
Median Sales Price

Minnehaha County, SD

June

Year to Date

	2010	2011	+ / -	2010	2011	+ / -
New Listings	18	22	+ 22.2%	140	134	- 4.3%
Closed Sales	14	8	- 42.9%	56	65	+ 16.1%
Median Sales Price*	\$234,400	\$165,700	- 29.3%	\$187,800	\$172,400	- 8.2%
Average Sales Price*	\$228,760	\$163,613	- 28.5%	\$205,727	\$189,314	- 8.0%
Percent of Original List Price Received*	97.5%	96.0%	- 1.5%	96.4%	95.6%	- 0.8%
Average Days on Market Until Sale	100	60	- 39.7%	99	80	- 19.2%
Inventory of Homes for Sale	92	100	+ 8.7%	--	--	--
Months Supply of Inventory	7.7	8.3	+ 7.2%	--	--	--

* Does not account for list prices from any previous listing contracts or seller concessions. | Activity for one month can sometimes look extreme due to small sample size.

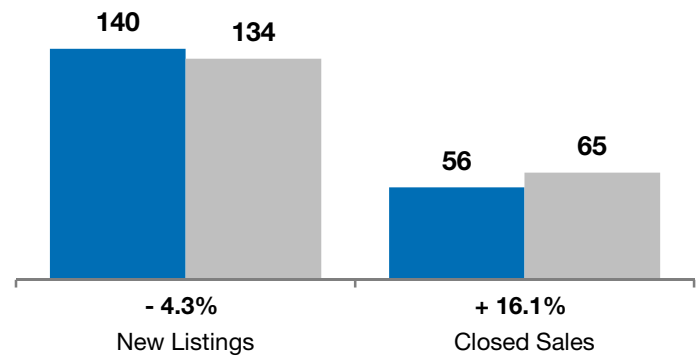
June

■ 2010 ■ 2011

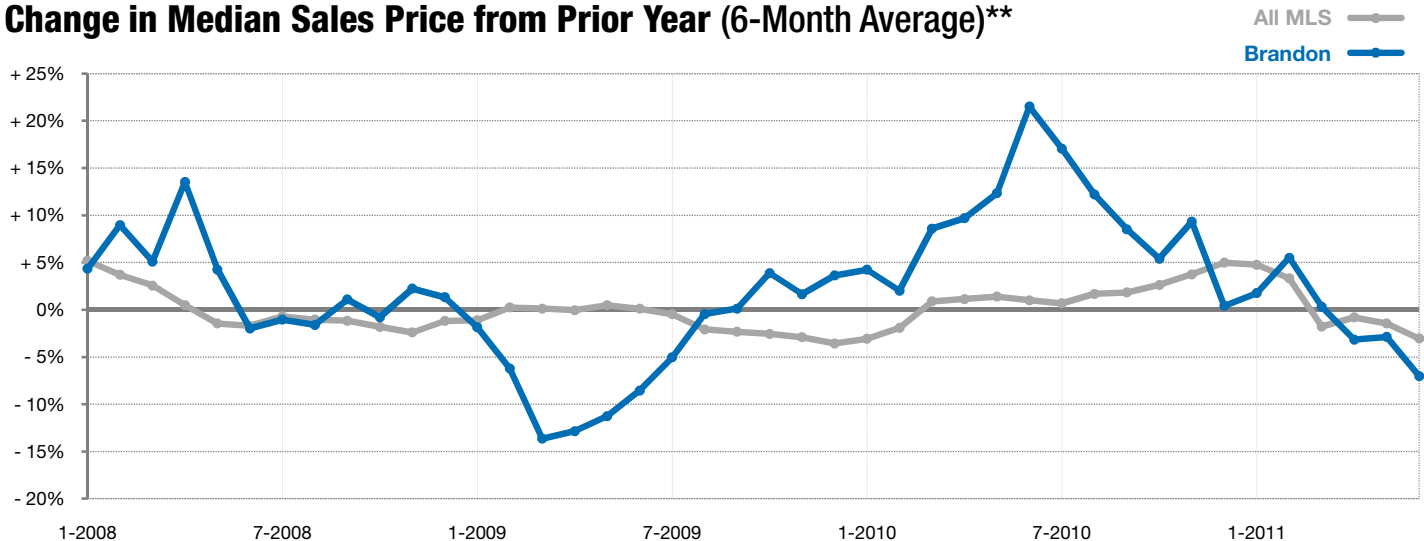


Year to Date

■ 2010 ■ 2011



Change in Median Sales Price from Prior Year (6-Month Average)**



** Each dot represents the change in median sales price from the prior year using a 6-month weighted average. This means that each of the 6 months used in a dot are proportioned according to their share of sales during that period. | All data from RASE Multiple Listing Service. Powered by 10K Research and Marketing.