

Local Market Update – June 2011

A RESEARCH TOOL PROVIDED BY THE REALTOR® ASSOCIATION OF THE SIOUX EMPIRE, INC.



Canton

+ 80.0% **+ 33.3%** **+ 111.3%**

Change in
New Listings

Change in
Closed Sales

Change in
Median Sales Price

Lincoln County, SD

June

Year to Date

	2010	2011	+ / -	2010	2011	+ / -
New Listings	5	9	+ 80.0%	29	42	+ 44.8%
Closed Sales	3	4	+ 33.3%	18	9	- 50.0%
Median Sales Price*	\$97,000	\$205,000	+ 111.3%	\$89,000	\$103,000	+ 15.7%
Average Sales Price*	\$92,200	\$204,704	+ 122.0%	\$101,561	\$164,492	+ 62.0%
Percent of Original List Price Received*	90.9%	94.5%	+ 4.0%	93.6%	96.5%	+ 3.1%
Average Days on Market Until Sale	68	75	+ 10.5%	96	94	- 1.7%
Inventory of Homes for Sale	20	34	+ 70.0%	--	--	--
Months Supply of Inventory	6.2	12.6	+ 104.6%	--	--	--

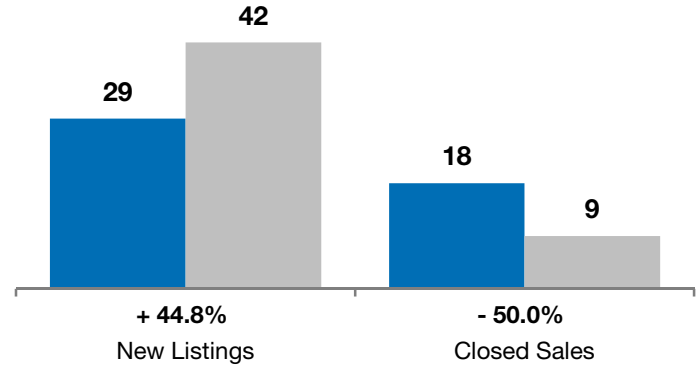
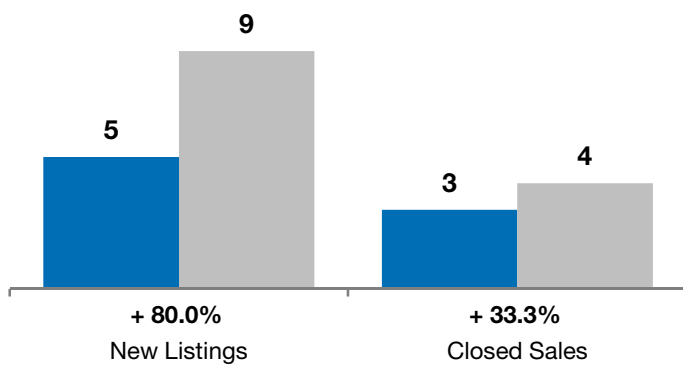
* Does not account for list prices from any previous listing contracts or seller concessions. | Activity for one month can sometimes look extreme due to small sample size.

June

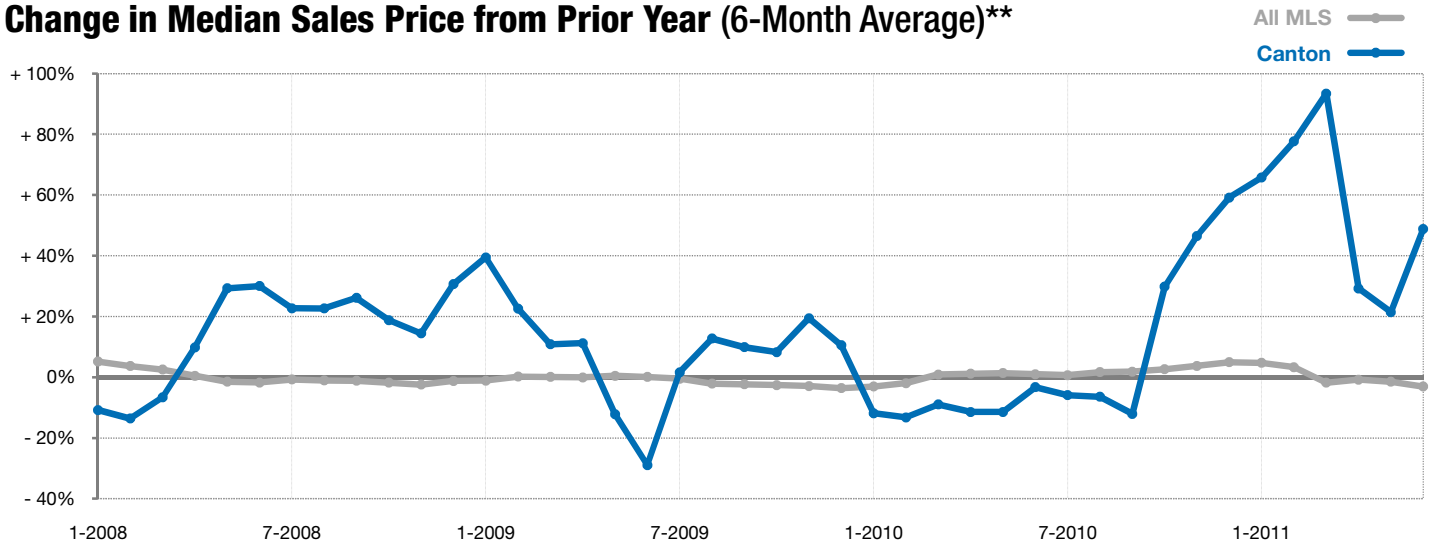
■ 2010 ■ 2011

Year to Date

■ 2010 ■ 2011



Change in Median Sales Price from Prior Year (6-Month Average)**



** Each dot represents the change in median sales price from the prior year using a 6-month weighted average. This means that each of the 6 months used in a dot are proportioned according to their share of sales during that period. | All data from RASE Multiple Listing Service. Powered by 10K Research and Marketing.