

# Local Market Update – June 2011

A RESEARCH TOOL PROVIDED BY THE REALTOR® ASSOCIATION OF THE SIOUX EMPIRE, INC.



## City of Sioux Falls

Lincoln and Minnehaha Counties, SD

**- 0.3%**

Change in  
New Listings

**- 12.2%**

Change in  
Closed Sales

**- 5.0%**

Change in  
Median Sales Price

|  | June      |           |         | Year to Date |           |         |
|--|-----------|-----------|---------|--------------|-----------|---------|
|  | 2010      | 2011      | + / -   | 2010         | 2011      | + / -   |
| New Listings                             | 348       | 347       | - 0.3%  | 2,315        | 2,057     | - 11.1% |
| Closed Sales                             | 271       | 238       | - 12.2% | 1,151        | 971       | - 15.6% |
| Median Sales Price*                      | \$151,900 | \$144,250 | - 5.0%  | \$146,000    | \$142,500 | - 2.4%  |
| Average Sales Price*                     | \$173,027 | \$169,862 | - 1.8%  | \$167,032    | \$165,953 | - 0.6%  |
| Percent of Original List Price Received* | 96.2%     | 95.8%     | - 0.3%  | 95.9%        | 94.3%     | - 1.7%  |
| Average Days on Market Until Sale        | 76        | 82        | + 8.3%  | 78           | 91        | + 16.3% |
| Inventory of Homes for Sale              | 1,388     | 1,367     | - 1.5%  | --           | --        | --      |
| Months Supply of Inventory               | 6.7       | 8.8       | + 31.3% | --           | --        | --      |

\* Does not account for list prices from any previous listing contracts or seller concessions. | Activity for one month can sometimes look extreme due to small sample size.

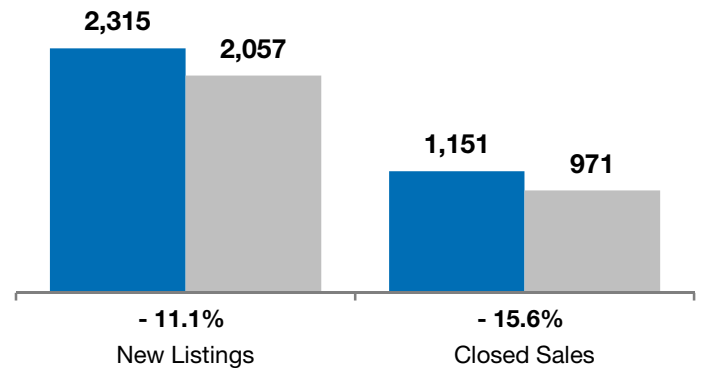
### June

■ 2010 ■ 2011

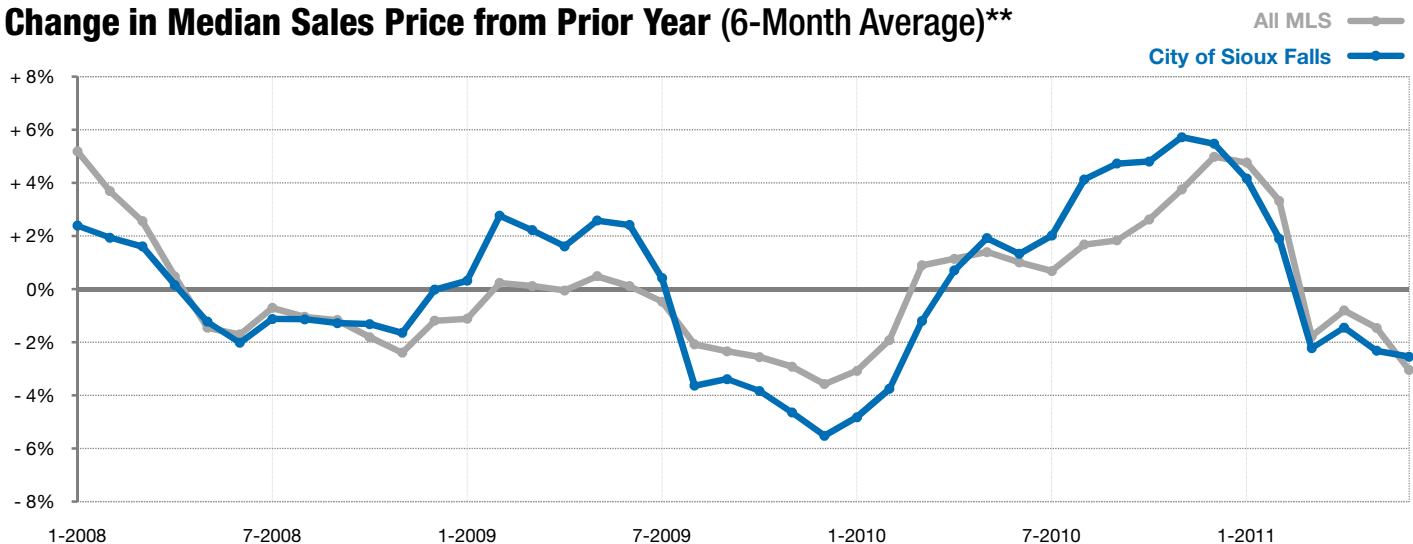


### Year to Date

■ 2010 ■ 2011



### Change in Median Sales Price from Prior Year (6-Month Average)\*\*



\*\* Each dot represents the change in median sales price from the prior year using a 6-month weighted average. This means that each of the 6 months used in a dot are proportioned according to their share of sales during that period. | All data from RASE Multiple Listing Service. Powered by 10K Research and Marketing.