

# Local Market Update – June 2011

A RESEARCH TOOL PROVIDED BY THE REALTOR® ASSOCIATION OF THE SIOUX EMPIRE, INC.



## Dell Rapids

**+ 75.0%**

Change in  
New Listings

**0.0%**

Change in  
Closed Sales

**+ 10.9%**

Change in  
Median Sales Price

Minnehaha County, SD

**June**

**Year to Date**

|  | 2010      | 2011             | + / -   | 2010      | 2011             | + / -   |
|--|-----------|------------------|---------|-----------|------------------|---------|
| New Listings                             | 8         | 14               | + 75.0% | 56        | 55               | - 1.8%  |
| Closed Sales                             | 6         | 6                | 0.0%    | 30        | 25               | - 16.7% |
| Median Sales Price*                      | \$123,500 | <b>\$137,000</b> | + 10.9% | \$121,950 | <b>\$132,000</b> | + 8.2%  |
| Average Sales Price*                     | \$107,967 | <b>\$171,942</b> | + 59.3% | \$137,957 | <b>\$152,526</b> | + 10.6% |
| Percent of Original List Price Received* | 88.7%     | <b>89.3%</b>     | + 0.7%  | 92.3%     | <b>92.5%</b>     | + 0.3%  |
| Average Days on Market Until Sale        | 114       | <b>91</b>        | - 19.7% | 125       | <b>103</b>       | - 17.7% |
| Inventory of Homes for Sale              | 44        | <b>50</b>        | + 13.6% | --        | --               | --      |
| Months Supply of Inventory               | 8.0       | <b>13.6</b>      | + 70.5% | --        | --               | --      |

\* Does not account for list prices from any previous listing contracts or seller concessions. | Activity for one month can sometimes look extreme due to small sample size.

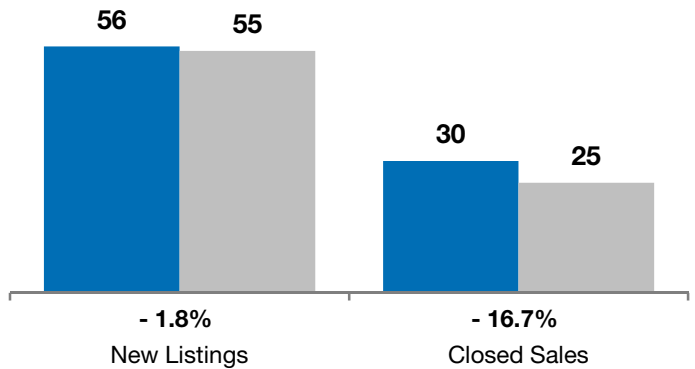
**June**

■ 2010 ■ 2011

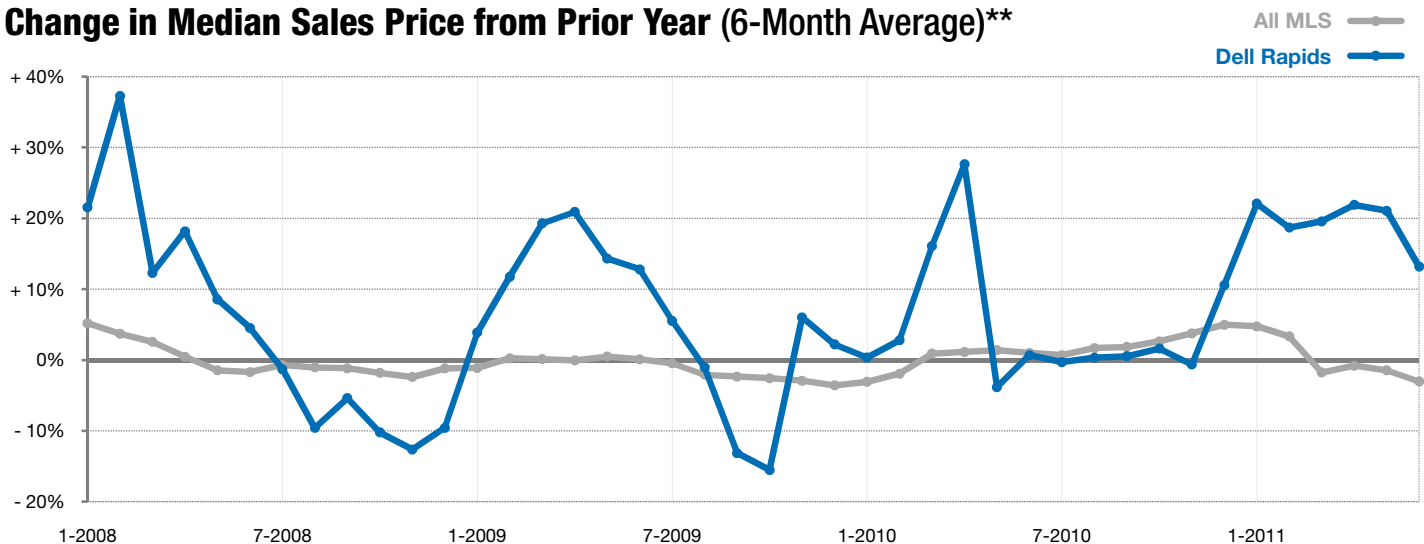


**Year to Date**

■ 2010 ■ 2011



### Change in Median Sales Price from Prior Year (6-Month Average)\*\*



\*\* Each dot represents the change in median sales price from the prior year using a 6-month weighted average. This means that each of the 6 months used in a dot are proportioned according to their share of sales during that period. | All data from RASE Multiple Listing Service. Powered by 10K Research and Marketing.