

Local Market Update – June 2011

A RESEARCH TOOL PROVIDED BY THE REALTOR® ASSOCIATION OF THE SIOUX EMPIRE, INC.



Hartford

- 27.3% **+ 100.0%** **+ 27.2%**

Change in
New Listings

Change in
Closed Sales

Change in
Median Sales Price

Minnehaha County, SD

June

Year to Date

	2010	2011	+ / -	2010	2011	+ / -
New Listings	11	8	- 27.3%	56	45	- 19.6%
Closed Sales	2	4	+ 100.0%	21	20	- 4.8%
Median Sales Price*	\$136,400	\$173,500	+ 27.2%	\$155,000	\$140,500	- 9.4%
Average Sales Price*	\$136,400	\$193,475	+ 41.8%	\$147,286	\$174,088	+ 18.2%
Percent of Original List Price Received*	83.1%	94.3%	+ 13.5%	93.6%	92.9%	- 0.8%
Average Days on Market Until Sale	74	93	+ 26.5%	98	130	+ 32.3%
Inventory of Homes for Sale	39	39	0.0%	--	--	--
Months Supply of Inventory	9.5	15.1	+ 58.4%	--	--	--

* Does not account for list prices from any previous listing contracts or seller concessions. | Activity for one month can sometimes look extreme due to small sample size.

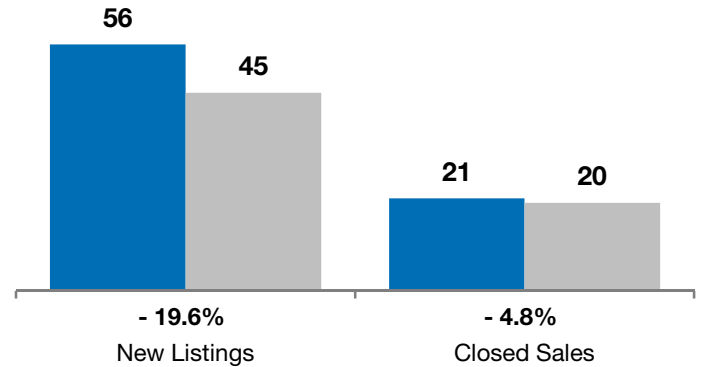
June

■ 2010 ■ 2011

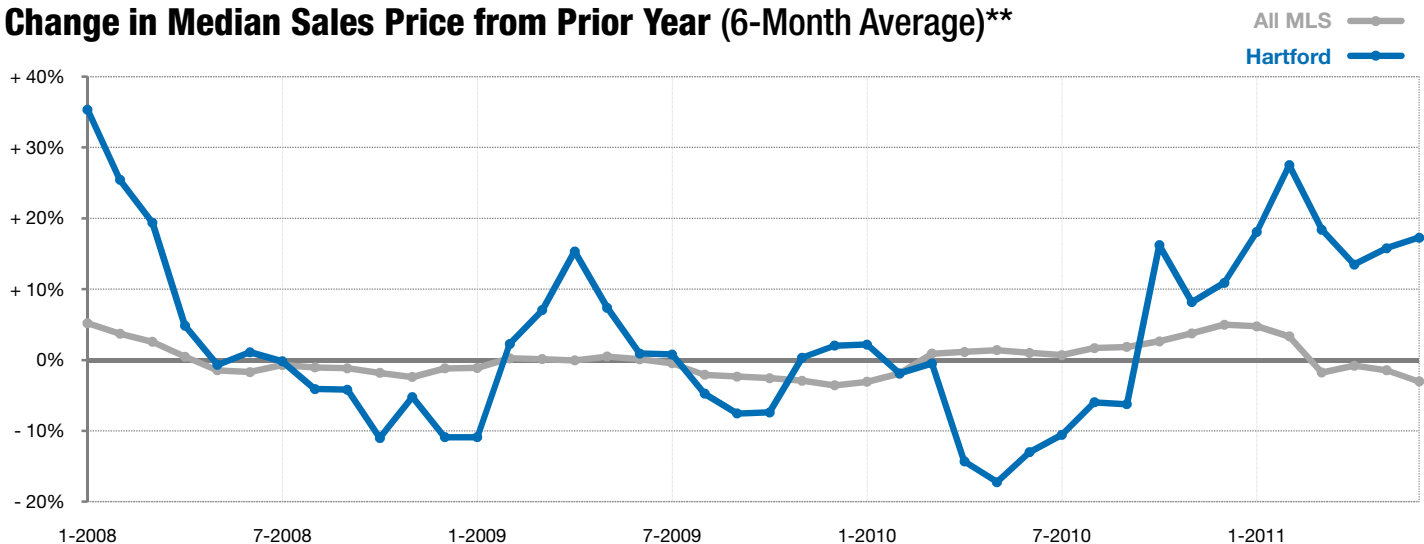


Year to Date

■ 2010 ■ 2011



Change in Median Sales Price from Prior Year (6-Month Average)**



** Each dot represents the change in median sales price from the prior year using a 6-month weighted average. This means that each of the 6 months used in a dot are proportioned according to their share of sales during that period. | All data from RASE Multiple Listing Service. Powered by 10K Research and Marketing.