

Local Market Update – June 2011

A RESEARCH TOOL PROVIDED BY THE REALTOR® ASSOCIATION OF THE SIOUX EMPIRE, INC.



Luverne

+ 9.1%

Change in
New Listings

- 20.0%

Change in
Closed Sales

+ 0.9%

Change in
Median Sales Price

Rock County, MN

June

Year to Date

	2010	2011	+ / -	2010	2011	+ / -
New Listings	11	12	+ 9.1%	56	49	- 12.5%
Closed Sales	5	4	- 20.0%	22	19	- 13.6%
Median Sales Price*	\$86,000	\$86,750	+ 0.9%	\$114,000	\$85,000	- 25.4%
Average Sales Price*	\$102,880	\$82,000	- 20.3%	\$106,129	\$87,558	- 17.5%
Percent of Original List Price Received*	96.2%	84.6%	- 12.1%	93.4%	84.8%	- 9.2%
Average Days on Market Until Sale	142	124	- 12.6%	114	170	+ 48.5%
Inventory of Homes for Sale	49	62	+ 26.5%	--	--	--
Months Supply of Inventory	15.1	16.2	+ 7.3%	--	--	--

* Does not account for list prices from any previous listing contracts or seller concessions. | Activity for one month can sometimes look extreme due to small sample size.

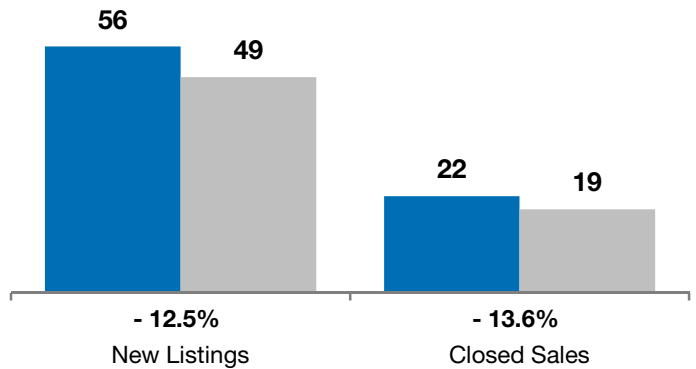
June

■ 2010 ■ 2011

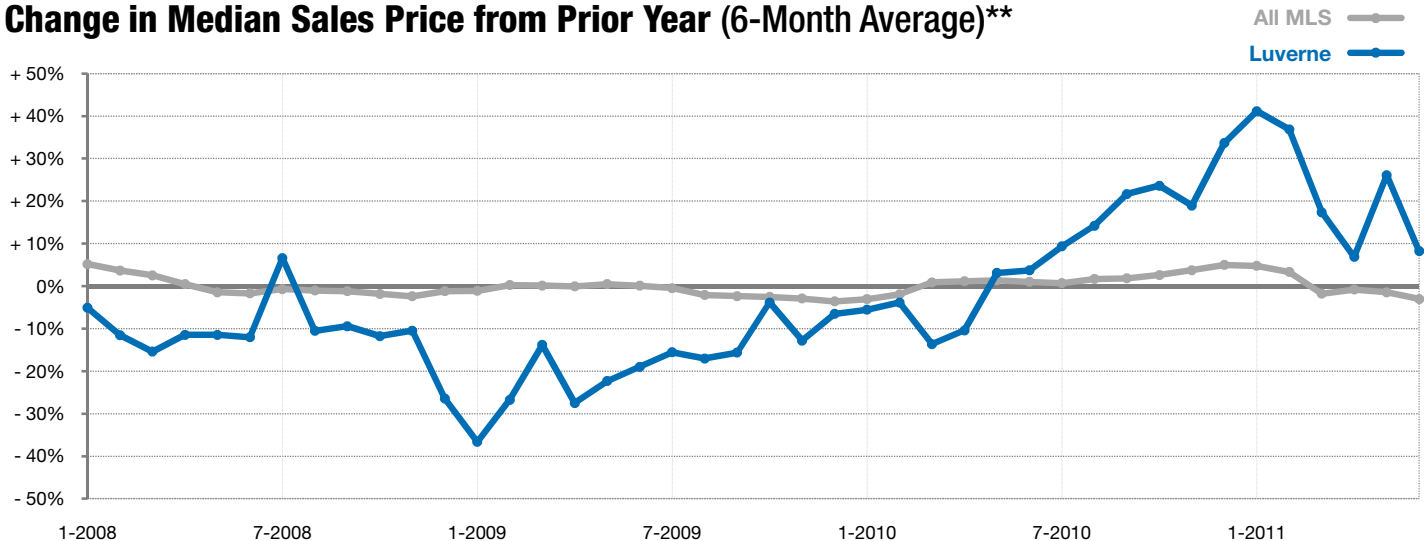


Year to Date

■ 2010 ■ 2011



Change in Median Sales Price from Prior Year (6-Month Average)**



** Each dot represents the change in median sales price from the prior year using a 6-month weighted average. This means that each of the 6 months used in a dot are proportioned according to their share of sales during that period. | All data from RASE Multiple Listing Service. Powered by 10K Research and Marketing.