

Local Market Update – July 2011

A RESEARCH TOOL PROVIDED BY THE REALTOR® ASSOCIATION OF THE SIOUX EMPIRE, INC.



City of Sioux Falls

Lincoln and Minnehaha Counties, SD

- 11.5%

Change in
New Listings

+ 11.3%

Change in
Closed Sales

- 1.5%

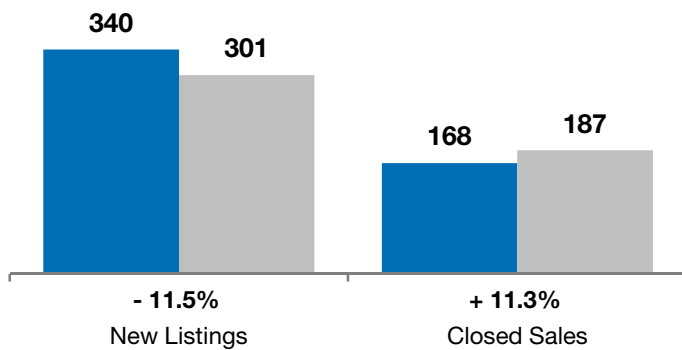
Change in
Median Sales Price

	July			Year to Date		
	2010	2011	+ / -	2010	2011	+ / -
New Listings	340	301	- 11.5%	2,656	2,382	- 10.3%
Closed Sales	168	187	+ 11.3%	1,319	1,162	- 11.9%
Median Sales Price*	\$149,700	\$147,395	- 1.5%	\$146,900	\$143,500	- 2.3%
Average Sales Price*	\$185,019	\$174,769	- 5.5%	\$169,309	\$167,319	- 1.2%
Percent of Original List Price Received*	93.8%	95.4%	+ 1.7%	95.6%	94.4%	- 1.3%
Average Days on Market Until Sale	78	83	+ 5.4%	78	90	+ 14.6%
Inventory of Homes for Sale	1,394	1,375	- 1.4%	--	--	--
Months Supply of Inventory	6.9	8.6	+ 24.8%	--	--	--

* Does not account for list prices from any previous listing contracts or seller concessions. | Activity for one month can sometimes look extreme due to small sample size.

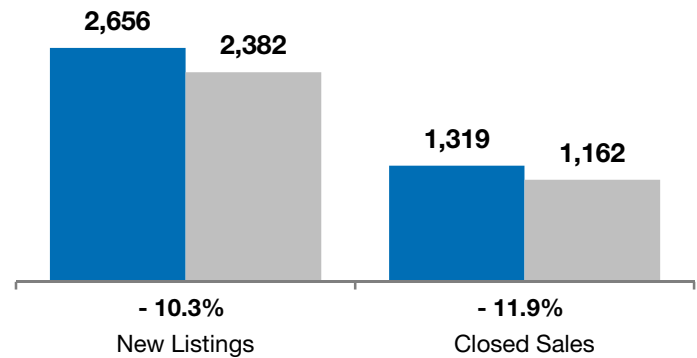
July

■ 2010 ■ 2011

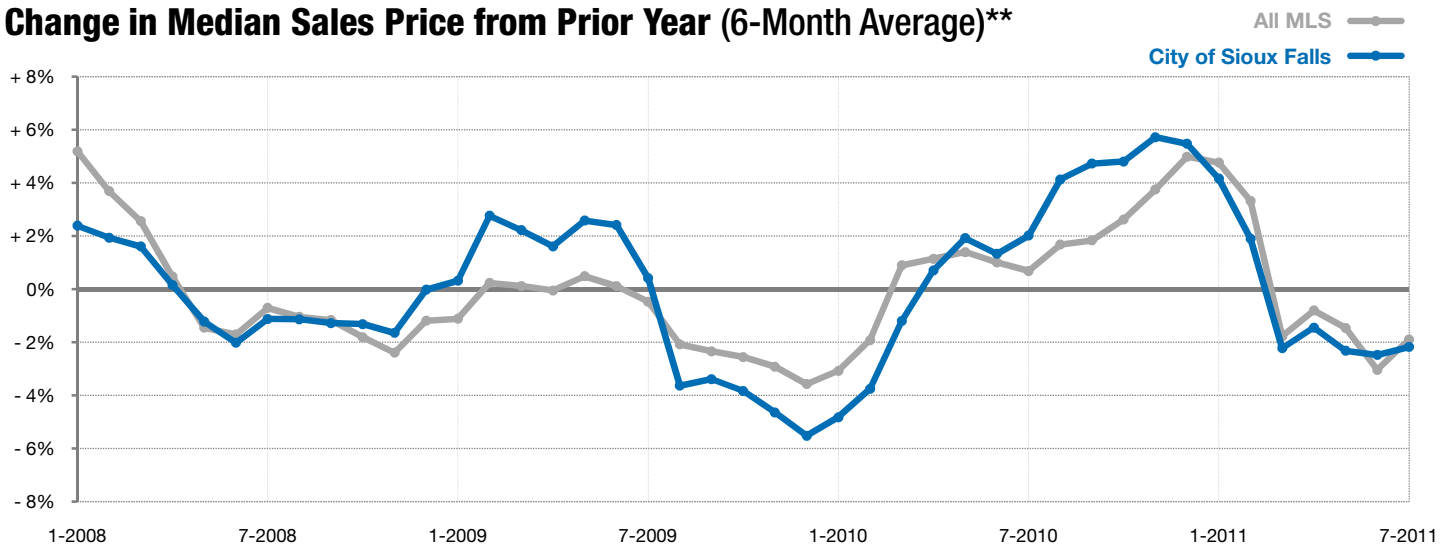


Year to Date

■ 2010 ■ 2011



Change in Median Sales Price from Prior Year (6-Month Average)**



** Each dot represents the change in median sales price from the prior year using a 6-month weighted average. This means that each of the 6 months used in a dot are proportioned according to their share of sales during that period. | All data from RASE Multiple Listing Service. Powered by 10K Research and Marketing.