

# Local Market Update – July 2011

A RESEARCH TOOL PROVIDED BY THE REALTOR® ASSOCIATION OF THE SIOUX EMPIRE, INC.



## Dell Rapids

**+ 10.0%**

Change in  
New Listings

**+ 33.3%**

Change in  
Closed Sales

**+ 57.3%**

Change in  
Median Sales Price

Minnehaha County, SD

**July**

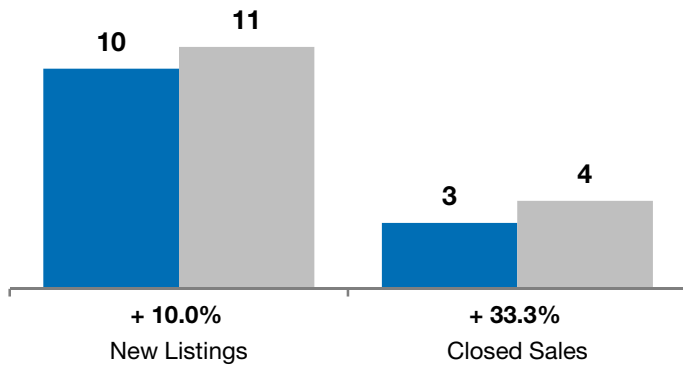
**Year to Date**

	2010	2011	+ / -	2010	2011	+ / -
New Listings	10	11	+ 10.0%	66	68	+ 3.0%
Closed Sales	3	4	+ 33.3%	33	29	- 12.1%
Median Sales Price*	\$82,000	<b>\$129,000</b>	+ 57.3%	\$120,000	<b>\$132,000</b>	+ 10.0%
Average Sales Price*	\$149,333	<b>\$167,000</b>	+ 11.8%	\$138,991	<b>\$154,594</b>	+ 11.2%
Percent of Original List Price Received*	95.1%	<b>93.7%</b>	- 1.4%	92.5%	<b>92.7%</b>	+ 0.2%
Average Days on Market Until Sale	60	<b>50</b>	- 17.0%	119	<b>95</b>	- 19.8%
Inventory of Homes for Sale	50	<b>59</b>	+ 18.0%	--	--	--
Months Supply of Inventory	8.8	<b>17.3</b>	+ 95.7%	--	--	--

\* Does not account for list prices from any previous listing contracts or seller concessions. | Activity for one month can sometimes look extreme due to small sample size.

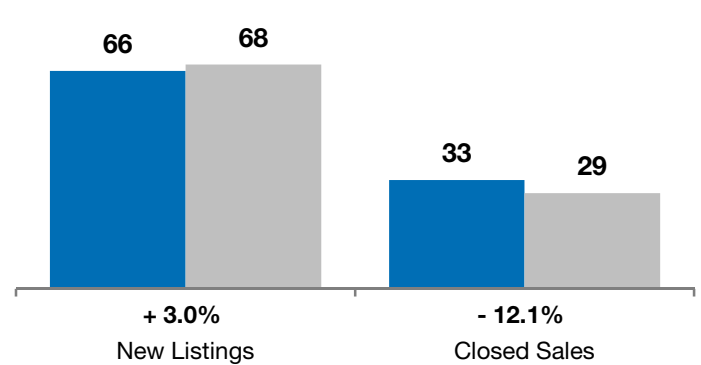
**July**

■ 2010 ■ 2011

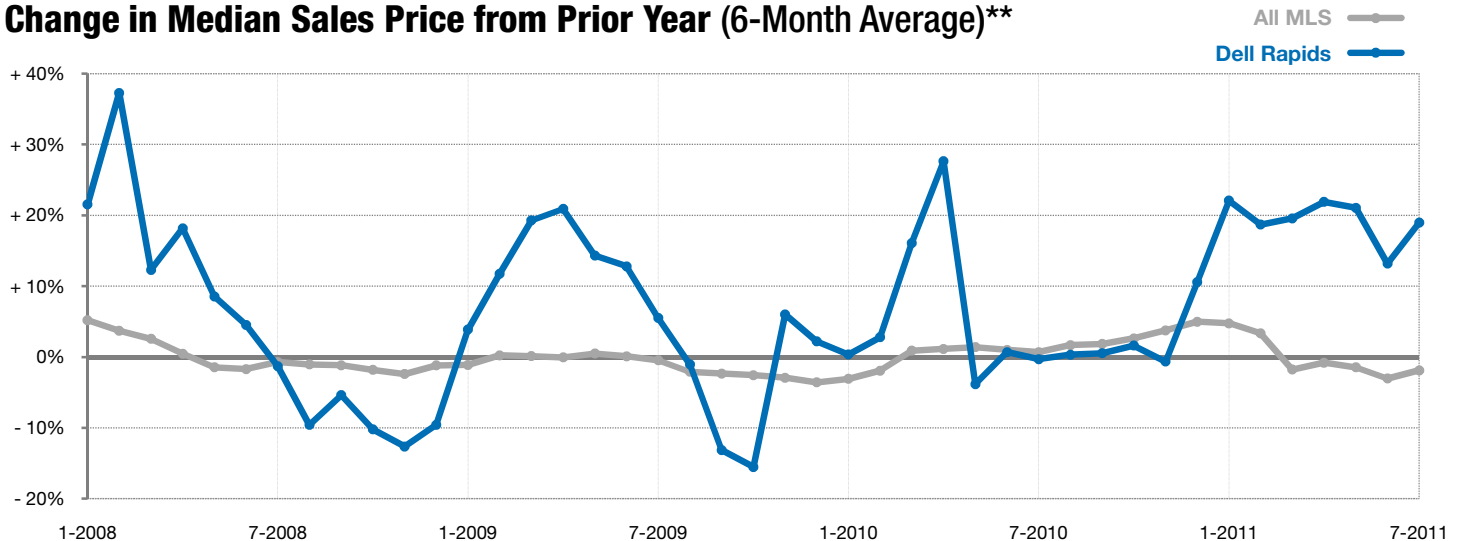


**Year to Date**

■ 2010 ■ 2011



### Change in Median Sales Price from Prior Year (6-Month Average)\*\*



\*\* Each dot represents the change in median sales price from the prior year using a 6-month weighted average. This means that each of the 6 months used in a dot are proportioned according to their share of sales during that period. | All data from RASE Multiple Listing Service. Powered by 10K Research and Marketing.