

Local Market Update – July 2011

A RESEARCH TOOL PROVIDED BY THE REALTOR® ASSOCIATION OF THE SIOUX EMPIRE, INC.



Garretson

- 50.0%

Change in
New Listings

- 33.3%

Change in
Closed Sales

+ 78.6%

Change in
Median Sales Price

Minnehaha County, SD

July

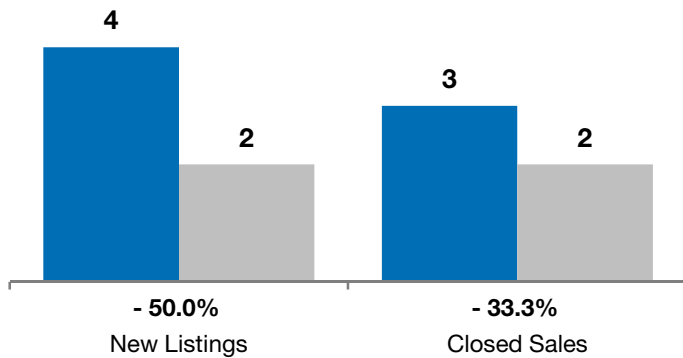
Year to Date

	2010	2011	+ / -	2010	2011	+ / -
New Listings	4	2	- 50.0%	30	27	- 10.0%
Closed Sales	3	2	- 33.3%	9	10	+ 11.1%
Median Sales Price*	\$87,500	\$156,250	+ 78.6%	\$89,000	\$177,000	+ 98.9%
Average Sales Price*	\$94,767	\$156,250	+ 64.9%	\$119,422	\$194,110	+ 62.5%
Percent of Original List Price Received*	98.8%	91.5%	- 7.4%	95.8%	93.9%	- 2.0%
Average Days on Market Until Sale	32	47	+ 46.9%	82	84	+ 2.4%
Inventory of Homes for Sale	20	17	- 15.0%	--	--	--
Months Supply of Inventory	12.0	6.3	- 47.5%	--	--	--

* Does not account for list prices from any previous listing contracts or seller concessions. | Activity for one month can sometimes look extreme due to small sample size.

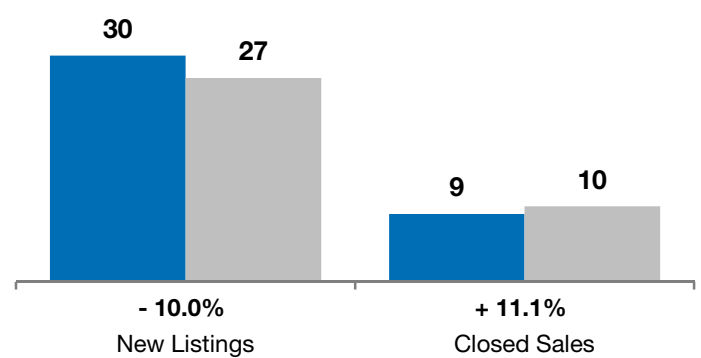
July

■ 2010 ■ 2011

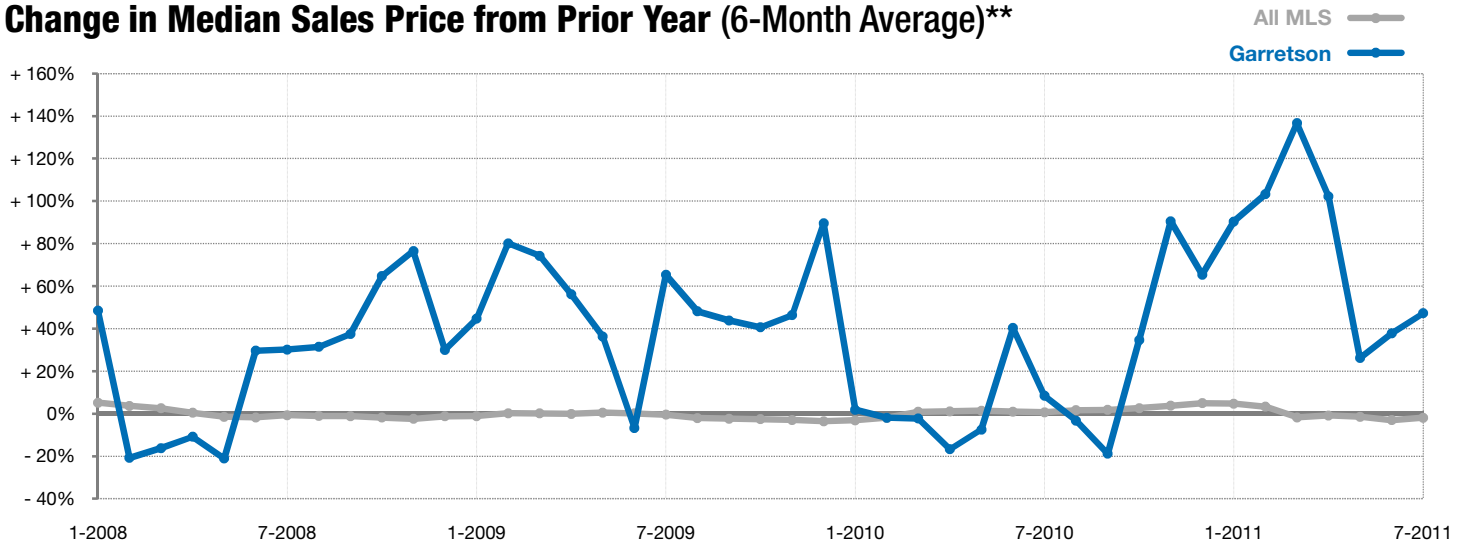


Year to Date

■ 2010 ■ 2011



Change in Median Sales Price from Prior Year (6-Month Average)**



** Each dot represents the change in median sales price from the prior year using a 6-month weighted average. This means that each of the 6 months used in a dot are proportioned according to their share of sales during that period. | All data from RASE Multiple Listing Service. Powered by 10K Research and Marketing.