

Local Market Update – July 2011

A RESEARCH TOOL PROVIDED BY THE REALTOR® ASSOCIATION OF THE SIOUX EMPIRE, INC.



Hartford

- 28.6%

Change in
New Listings

- 80.0%

Change in
Closed Sales

- 52.2%

Change in
Median Sales Price

Minnehaha County, SD

July

Year to Date

	2010	2011	+ / -	2010	2011	+ / -
New Listings	7	5	- 28.6%	63	50	- 20.6%
Closed Sales	5	1	- 80.0%	26	21	- 19.2%
Median Sales Price*	\$146,500	\$70,000	- 52.2%	\$148,000	\$140,000	- 5.4%
Average Sales Price*	\$170,800	\$70,000	- 59.0%	\$151,808	\$169,131	+ 11.4%
Percent of Original List Price Received*	97.0%	100.0%	+ 3.1%	94.2%	93.2%	- 1.1%
Average Days on Market Until Sale	110	30	- 72.7%	100	125	+ 24.6%
Inventory of Homes for Sale	40	37	- 7.5%	--	--	--
Months Supply of Inventory	11.0	13.5	+ 22.3%	--	--	--

* Does not account for list prices from any previous listing contracts or seller concessions. | Activity for one month can sometimes look extreme due to small sample size.

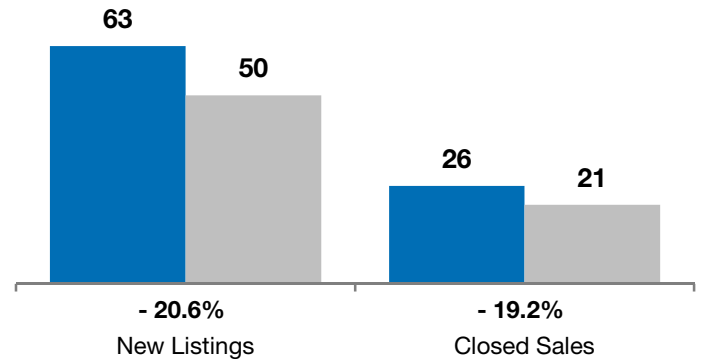
July

■ 2010 ■ 2011

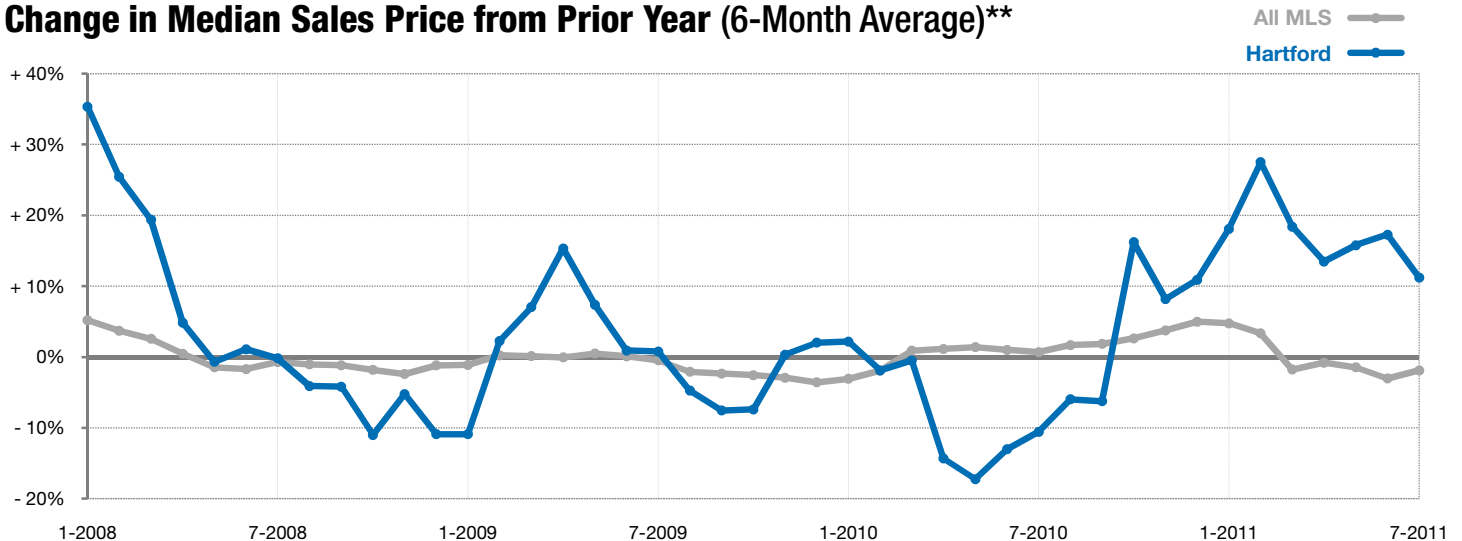


Year to Date

■ 2010 ■ 2011



Change in Median Sales Price from Prior Year (6-Month Average)**



** Each dot represents the change in median sales price from the prior year using a 6-month weighted average. This means that each of the 6 months used in a dot are proportioned according to their share of sales during that period. | All data from RASE Multiple Listing Service. Powered by 10K Research and Marketing.