

Local Market Update – July 2011

A RESEARCH TOOL PROVIDED BY THE REALTOR® ASSOCIATION OF THE SIOUX EMPIRE, INC.



Luverne

- 41.7%

Change in
New Listings

+ 66.7%

Change in
Closed Sales

- 7.4%

Change in
Median Sales Price

Rock County, MN

July

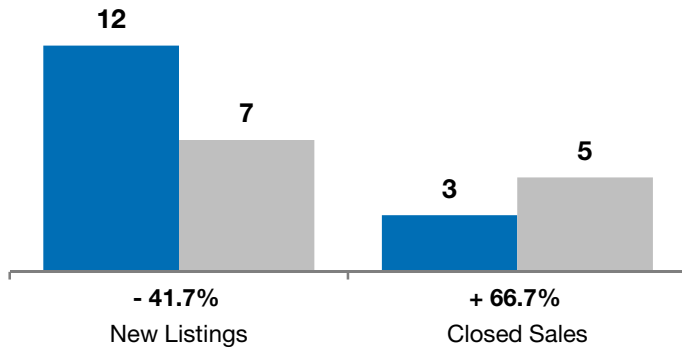
Year to Date

	2010	2011	+ / -	2010	2011	+ / -
New Listings	12	7	- 41.7%	68	57	- 16.2%
Closed Sales	3	5	+ 66.7%	25	24	- 4.0%
Median Sales Price*	\$175,000	\$162,000	- 7.4%	\$116,500	\$99,100	- 14.9%
Average Sales Price*	\$152,333	\$166,900	+ 9.6%	\$111,904	\$104,088	- 7.0%
Percent of Original List Price Received*	82.0%	88.8%	+ 8.4%	92.0%	85.6%	- 6.9%
Average Days on Market Until Sale	62	212	+ 241.6%	108	179	+ 65.3%
Inventory of Homes for Sale	55	61	+ 10.9%	--	--	--
Months Supply of Inventory	17.8	15.3	- 14.5%	--	--	--

* Does not account for list prices from any previous listing contracts or seller concessions. | Activity for one month can sometimes look extreme due to small sample size.

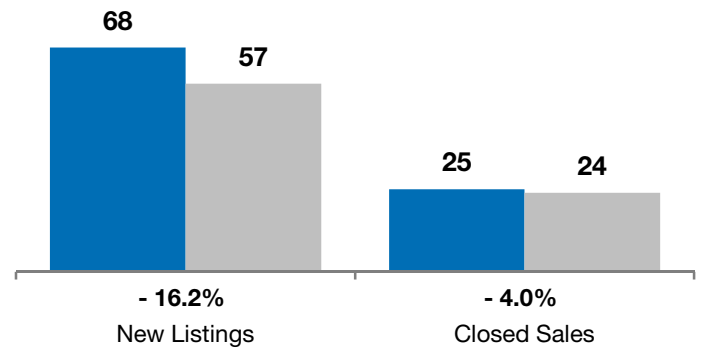
July

■ 2010 ■ 2011

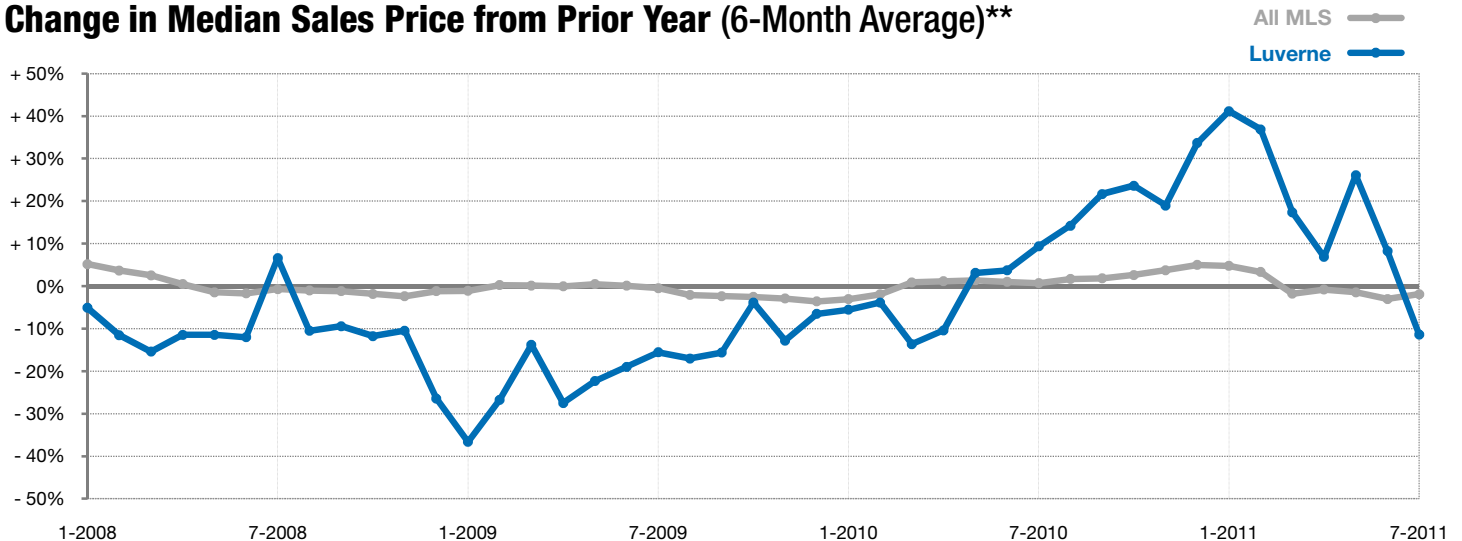


Year to Date

■ 2010 ■ 2011



Change in Median Sales Price from Prior Year (6-Month Average)**



** Each dot represents the change in median sales price from the prior year using a 6-month weighted average. This means that each of the 6 months used in a dot are proportioned according to their share of sales during that period. | All data from RASE Multiple Listing Service. Powered by 10K Research and Marketing.