

Local Market Update – July 2011

A RESEARCH TOOL PROVIDED BY THE REALTOR® ASSOCIATION OF THE SIOUX EMPIRE, INC.



Pipestone

- 66.7%

Change in
New Listings

- 100.0%

Change in
Closed Sales

- 100.0%

Change in
Median Sales Price

Pipestone County, MN

July

Year to Date

	2010	2011	+ / -	2010	2011	+ / -
New Listings	3	1	- 66.7%	17	12	- 29.4%
Closed Sales	1	0	- 100.0%	5	0	- 100.0%
Median Sales Price*	\$36,000	\$0	- 100.0%	\$36,000	\$0	- 100.0%
Average Sales Price*	\$36,000	\$0	- 100.0%	\$52,500	\$0	- 100.0%
Percent of Original List Price Received*	90.2%	0.0%	- 100.0%	83.2%	0.0%	- 100.0%
Average Days on Market Until Sale	24	0	- 100.0%	225	0	- 100.0%
Inventory of Homes for Sale	12	9	- 25.0%	--	--	--
Months Supply of Inventory	8.4	7.2	- 14.3%	--	--	--

* Does not account for list prices from any previous listing contracts or seller concessions. | Activity for one month can sometimes look extreme due to small sample size.

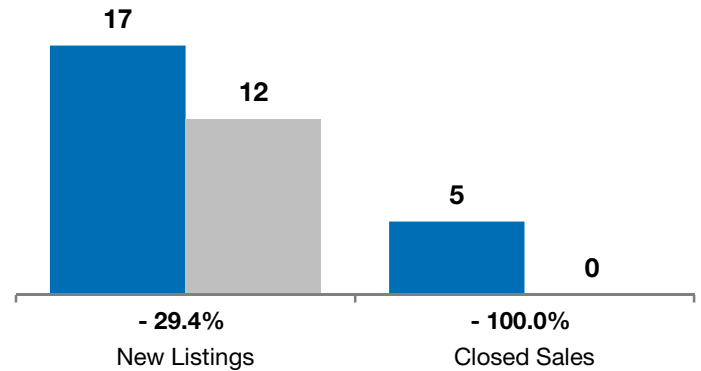
July

■ 2010 ■ 2011

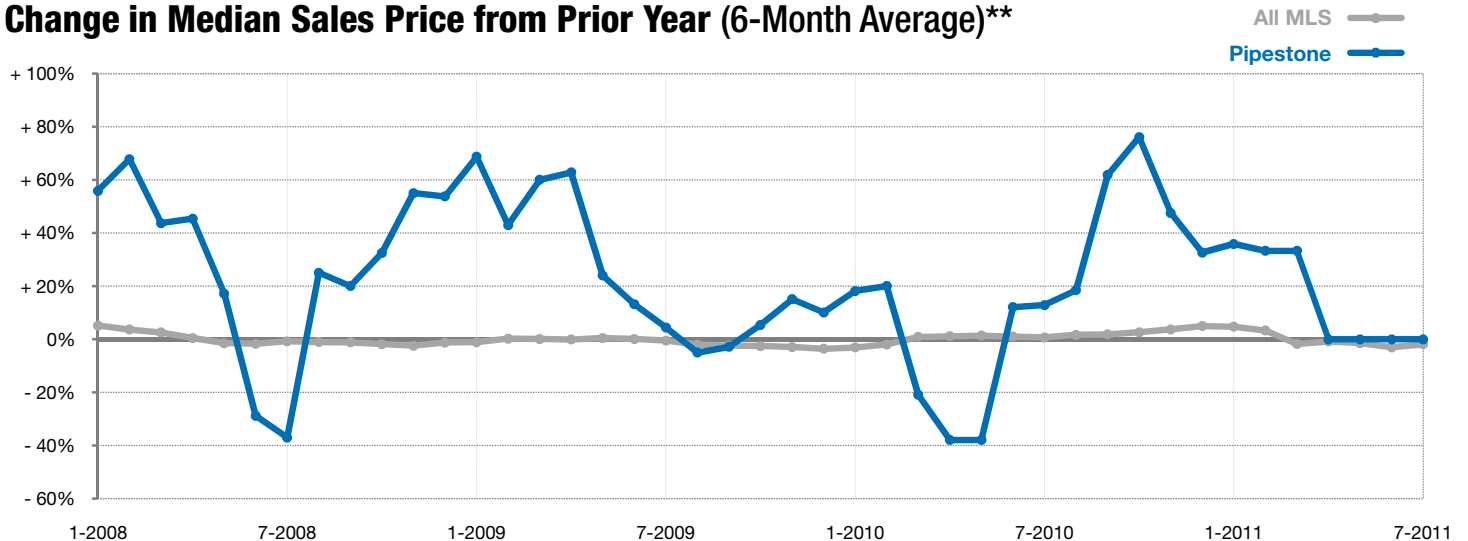


Year to Date

■ 2010 ■ 2011



Change in Median Sales Price from Prior Year (6-Month Average)**



** Each dot represents the change in median sales price from the prior year using a 6-month weighted average. This means that each of the 6 months used in a dot are proportioned according to their share of sales during that period. | All data from RASE Multiple Listing Service. Powered by 10K Research and Marketing.