

Local Market Update – July 2011

A RESEARCH TOOL PROVIDED BY THE REALTOR® ASSOCIATION OF THE SIOUX EMPIRE, INC.



Sioux Falls MSA

4-County Metro Region

- 19.6%

Change in
New Listings

+ 15.9%

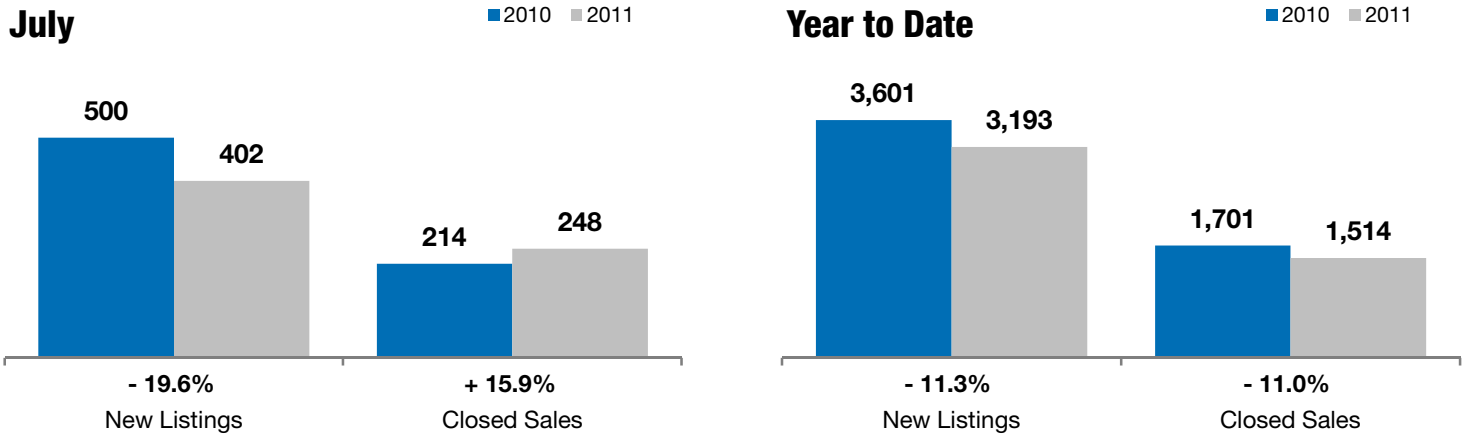
Change in
Closed Sales

+ 1.5%

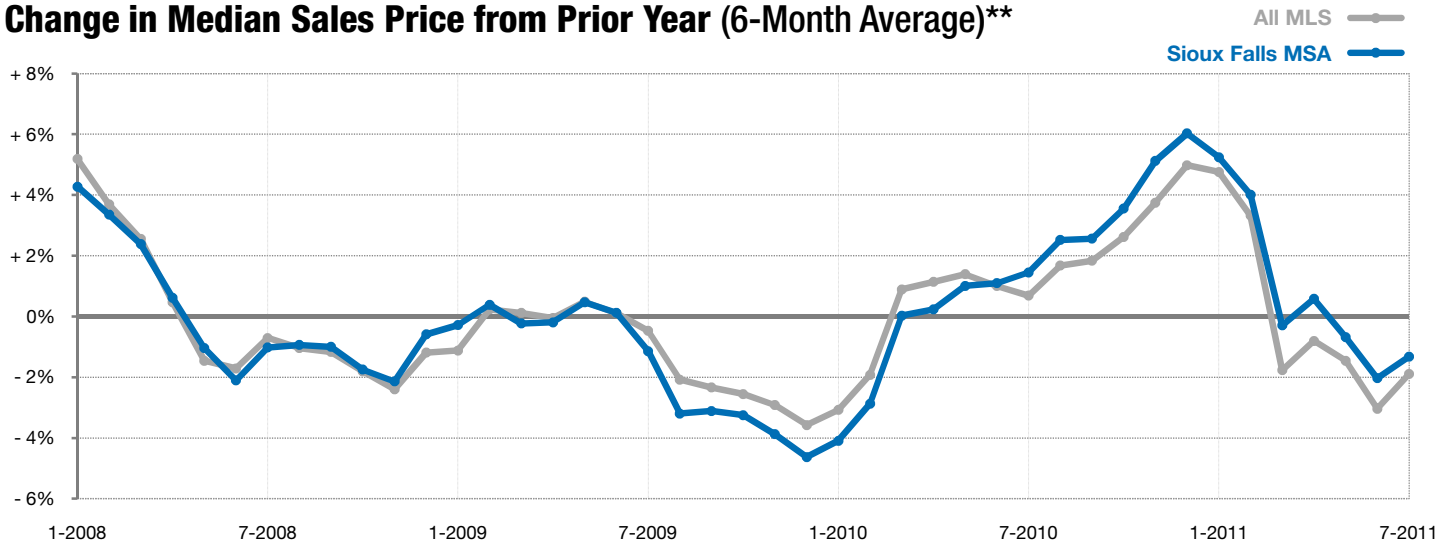
Change in
Median Sales Price

	July			Year to Date		
	2010	2011	+ / -	2010	2011	+ / -
New Listings	500	402	- 19.6%	3,601	3,193	- 11.3%
Closed Sales	214	248	+ 15.9%	1,701	1,514	- 11.0%
Median Sales Price*	\$147,000	\$149,250	+ 1.5%	\$145,000	\$143,250	- 1.2%
Average Sales Price*	\$182,409	\$180,819	- 0.9%	\$165,691	\$166,220	+ 0.3%
Percent of Original List Price Received*	93.8%	95.3%	+ 1.6%	95.4%	94.3%	- 1.1%
Average Days on Market Until Sale	85	89	+ 5.2%	84	92	+ 10.2%
Inventory of Homes for Sale	1,994	1,904	- 4.5%	--	--	--
Months Supply of Inventory	7.5	9.0	+ 20.4%	--	--	--

* Does not account for list prices from any previous listing contracts or seller concessions. | Activity for one month can sometimes look extreme due to small sample size.



Change in Median Sales Price from Prior Year (6-Month Average)**



** Each dot represents the change in median sales price from the prior year using a 6-month weighted average. This means that each of the 6 months used in a dot are proportioned according to their share of sales during that period. | All data from RASE Multiple Listing Service. Powered by 10K Research and Marketing.