

Local Market Update – August 2011

A RESEARCH TOOL PROVIDED BY THE REALTOR® ASSOCIATION OF THE SIOUX EMPIRE, INC.



Harrisburg

+ 11.8%

Change in
New Listings

+ 333.3%

Change in
Closed Sales

- 5.4%

Change in
Median Sales Price

Lincoln County, SD

August

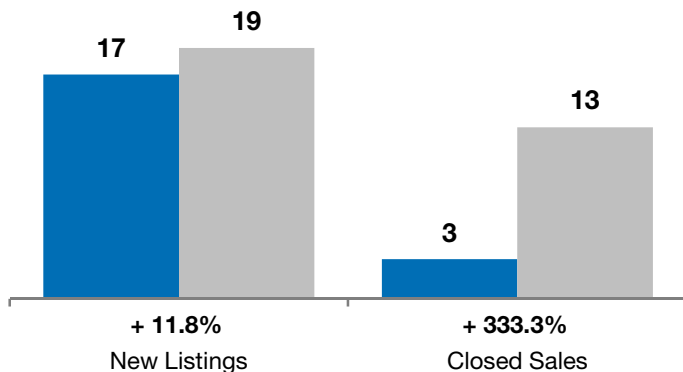
Year to Date

	2010	2011	+ / -	2010	2011	+ / -
New Listings	17	19	+ 11.8%	190	149	- 21.6%
Closed Sales	3	13	+ 333.3%	72	79	+ 9.7%
Median Sales Price*	\$154,280	\$146,000	- 5.4%	\$152,750	\$146,000	- 4.4%
Average Sales Price*	\$160,593	\$178,269	+ 11.0%	\$174,864	\$167,794	- 4.0%
Percent of Original List Price Received*	96.2%	97.4%	+ 1.2%	97.8%	96.0%	- 1.9%
Average Days on Market Until Sale	68	102	+ 49.4%	109	112	+ 2.9%
Inventory of Homes for Sale	112	78	- 30.4%	--	--	--
Months Supply of Inventory	10.4	8.6	- 17.6%	--	--	--

* Does not account for list prices from any previous listing contracts or seller concessions. | Activity for one month can sometimes look extreme due to small sample size.

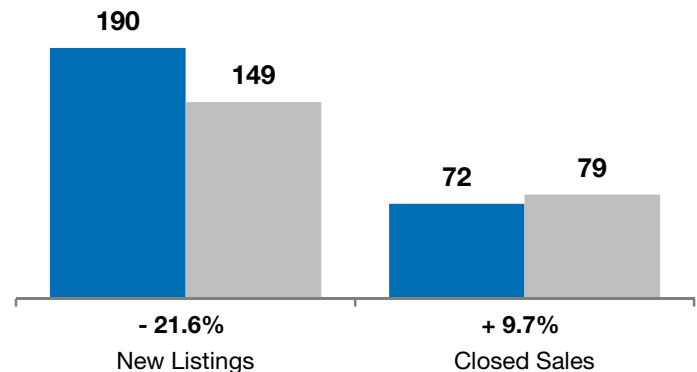
August

■ 2010 ■ 2011

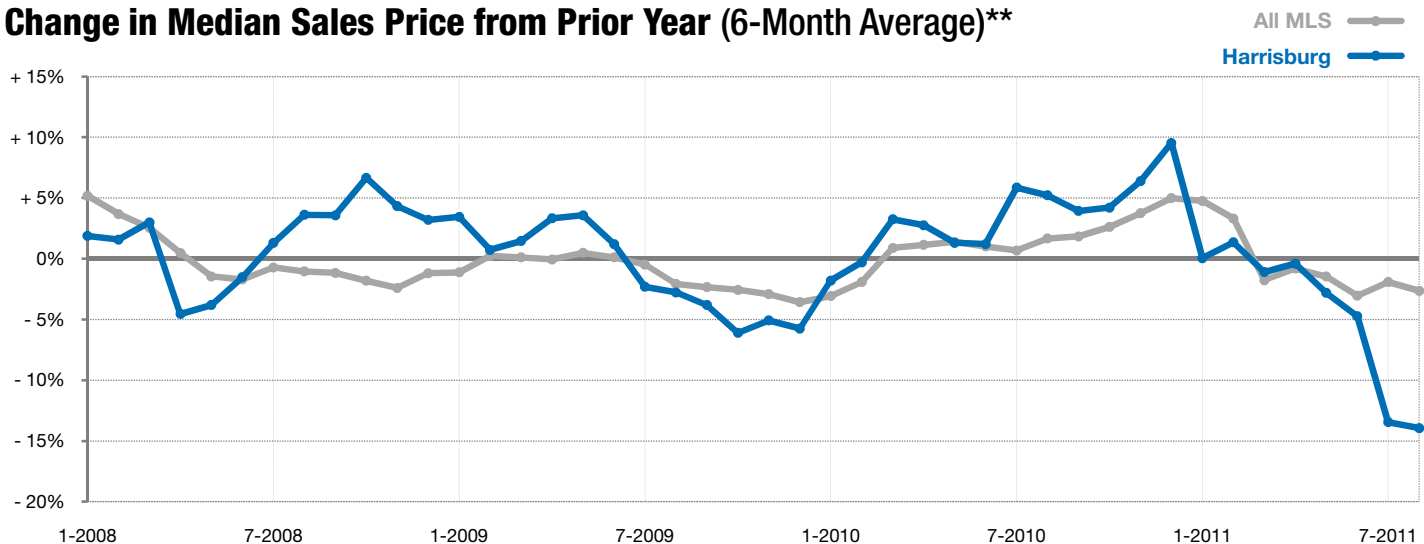


Year to Date

■ 2010 ■ 2011



Change in Median Sales Price from Prior Year (6-Month Average)**



** Each dot represents the change in median sales price from the prior year using a 6-month weighted average. This means that each of the 6 months used in a dot are proportioned according to their share of sales during that period. | Current as of September 7, 2011. All data from RASE Multiple Listing Service. | Powered by 10K Research and Marketing.