

# Local Market Update – August 2011

A RESEARCH TOOL PROVIDED BY THE REALTOR® ASSOCIATION OF THE SIOUX EMPIRE, INC.



## Luverne

**+ 83.3%**

Change in  
New Listings

**+ 250.0%**

Change in  
Closed Sales

**+ 47.1%**

Change in  
Median Sales Price

Rock County, MN

### August

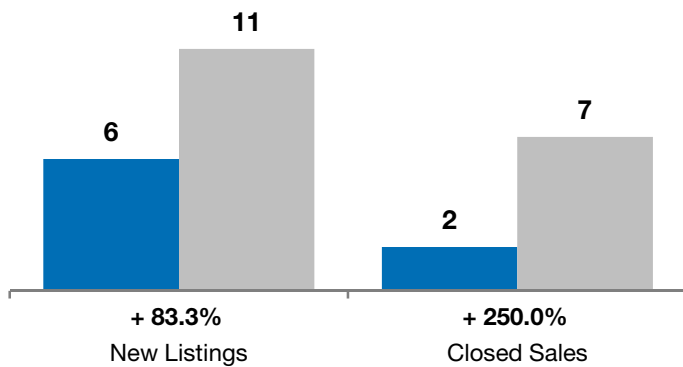
### Year to Date

	2010	2011	+ / -	2010	2011	+ / -
New Listings	6	11	+ 83.3%	74	68	- 8.1%
Closed Sales	2	7	+ 250.0%	27	31	+ 14.8%
Median Sales Price*	\$93,475	\$137,500	+ 47.1%	\$110,750	\$99,500	- 10.2%
Average Sales Price*	\$93,475	\$103,857	+ 11.1%	\$110,487	\$104,035	- 5.8%
Percent of Original List Price Received*	95.8%	88.8%	- 7.3%	92.2%	86.3%	- 6.4%
Average Days on Market Until Sale	96	226	+ 135.3%	107	189	+ 76.6%
Inventory of Homes for Sale	58	66	+ 13.8%	--	--	--
Months Supply of Inventory	17.4	16.5	- 5.2%	--	--	--

\* Does not account for list prices from any previous listing contracts or seller concessions. | Activity for one month can sometimes look extreme due to small sample size.

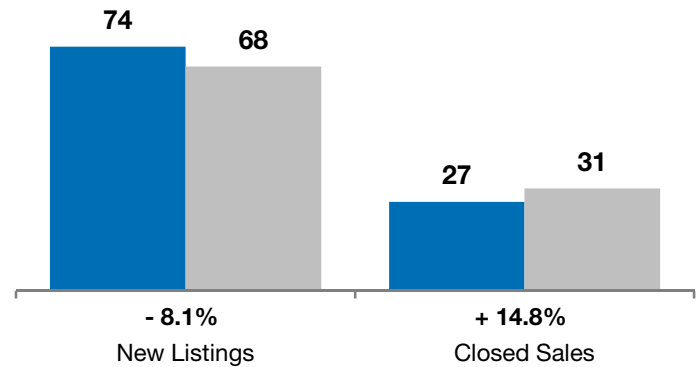
### August

■ 2010 ■ 2011

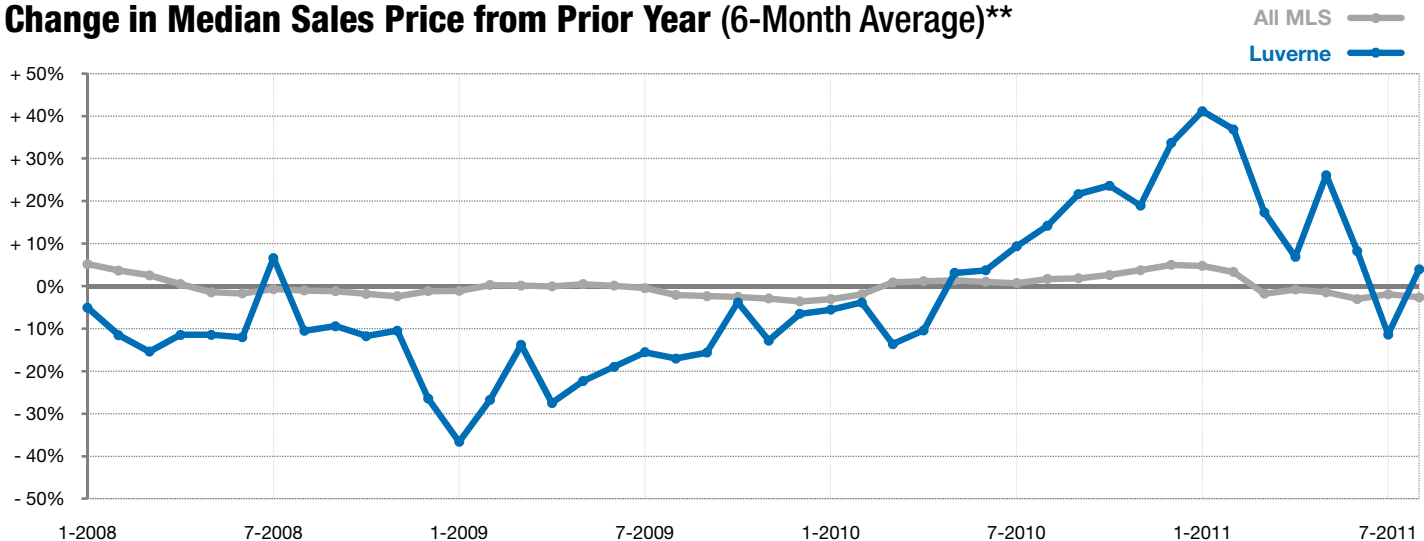


### Year to Date

■ 2010 ■ 2011



### Change in Median Sales Price from Prior Year (6-Month Average)\*\*



\*\* Each dot represents the change in median sales price from the prior year using a 6-month weighted average. This means that each of the 6 months used in a dot are proportioned according to their share of sales during that period. | Current as of September 7, 2011. All data from RASE Multiple Listing Service. | Powered by 10K Research and Marketing.