

Local Market Update – August 2011

A RESEARCH TOOL PROVIDED BY THE REALTOR® ASSOCIATION OF THE SIOUX EMPIRE, INC.



Tea

- 23.1%

Change in
New Listings

+ 20.0%

Change in
Closed Sales

- 12.5%

Change in
Median Sales Price

Lincoln County, SD

August

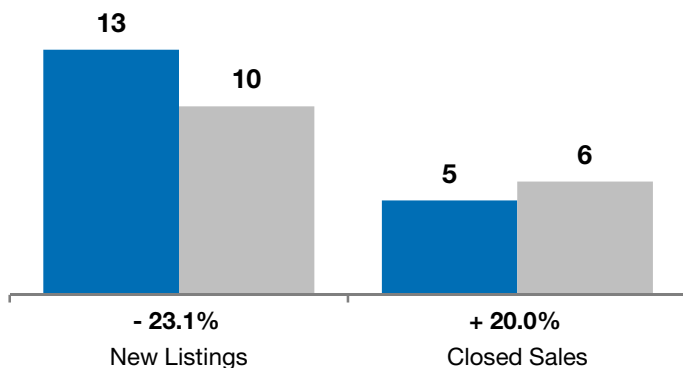
Year to Date

	2010	2011	+ / -	2010	2011	+ / -
New Listings	13	10	- 23.1%	132	103	- 22.0%
Closed Sales	5	6	+ 20.0%	57	43	- 24.6%
Median Sales Price*	\$172,000	\$150,500	- 12.5%	\$145,000	\$142,500	- 1.7%
Average Sales Price*	\$188,000	\$146,567	- 22.0%	\$156,330	\$160,514	+ 2.7%
Percent of Original List Price Received*	92.8%	94.7%	+ 2.0%	95.0%	95.6%	+ 0.6%
Average Days on Market Until Sale	53	108	+ 102.6%	69	93	+ 34.1%
Inventory of Homes for Sale	68	48	- 29.4%	--	--	--
Months Supply of Inventory	9.3	8.1	- 12.4%	--	--	--

* Does not account for list prices from any previous listing contracts or seller concessions. | Activity for one month can sometimes look extreme due to small sample size.

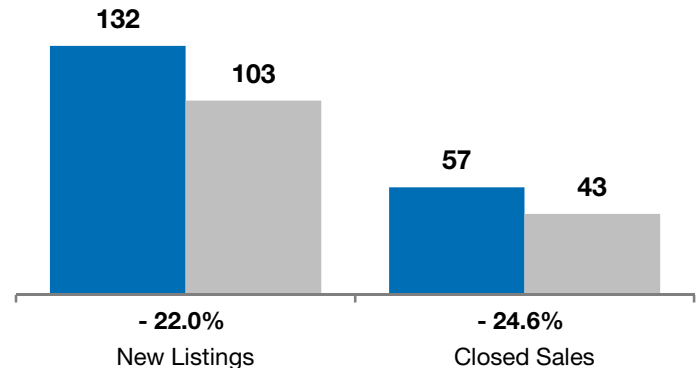
August

■ 2010 ■ 2011

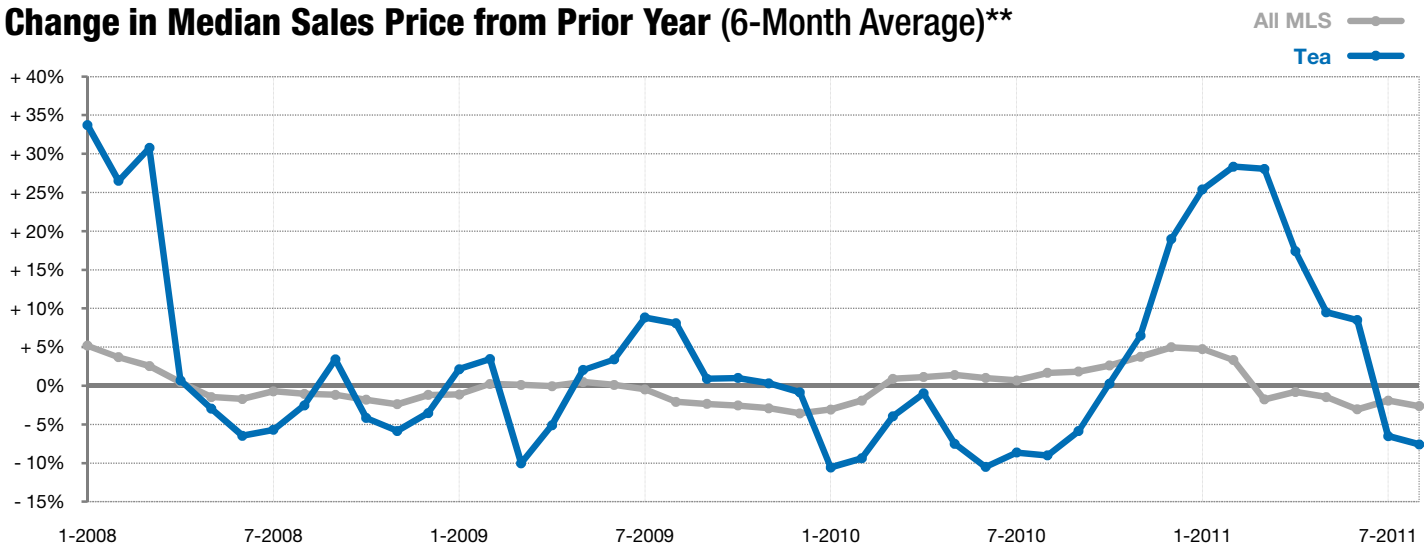


Year to Date

■ 2010 ■ 2011



Change in Median Sales Price from Prior Year (6-Month Average)**



** Each dot represents the change in median sales price from the prior year using a 6-month weighted average. This means that each of the 6 months used in a dot are proportioned according to their share of sales during that period. | Current as of September 7, 2011. All data from RASE Multiple Listing Service. | Powered by 10K Research and Marketing.