

Local Market Update – September 2011

A RESEARCH TOOL PROVIDED BY THE REALTOR® ASSOCIATION OF THE SIOUX EMPIRE, INC.



Garretson

- 25.0%

Change in
New Listings

- 33.3%

Change in
Closed Sales

+ 162.7%

Change in
Median Sales Price

Minnehaha County, SD

September

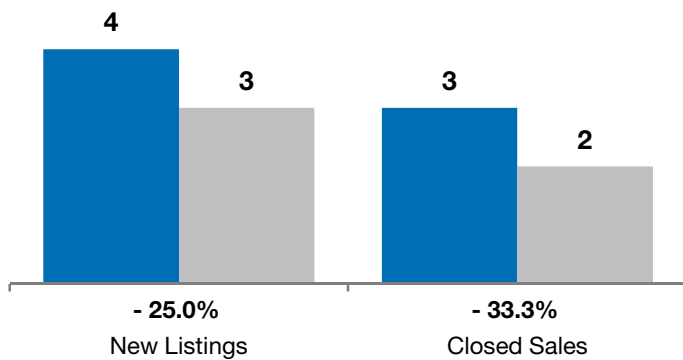
Year to Date

	2010	2011	+ / -	2010	2011	+ / -
New Listings	4	3	- 25.0%	36	34	- 5.6%
Closed Sales	3	2	- 33.3%	15	14	- 6.7%
Median Sales Price*	\$57,000	\$149,750	+ 162.7%	\$87,500	\$156,250	+ 78.6%
Average Sales Price*	\$57,333	\$149,750	+ 161.2%	\$131,600	\$171,793	+ 30.5%
Percent of Original List Price Received*	71.7%	91.4%	+ 27.5%	91.0%	94.4%	+ 3.7%
Average Days on Market Until Sale	81	111	+ 36.5%	79	81	+ 2.2%
Inventory of Homes for Sale	18	17	- 5.6%	--	--	--
Months Supply of Inventory	10.1	6.7	- 34.3%	--	--	--

* Does not account for list prices from any previous listing contracts or seller concessions. | Activity for one month can sometimes look extreme due to small sample size.

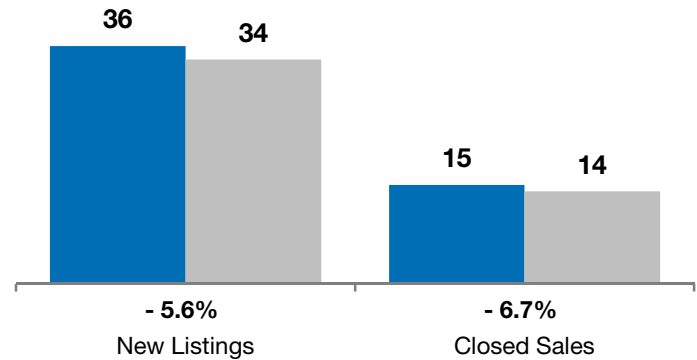
September

■ 2010 ■ 2011

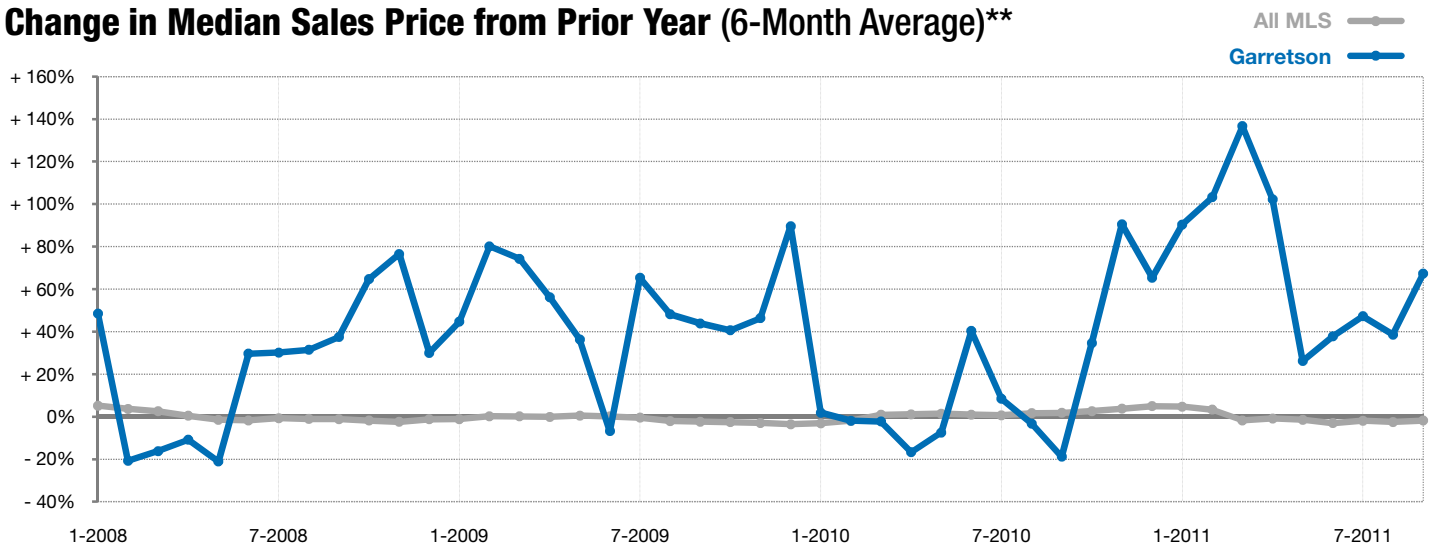


Year to Date

■ 2010 ■ 2011



Change in Median Sales Price from Prior Year (6-Month Average)**



** Each dot represents the change in median sales price from the prior year using a 6-month weighted average. This means that each of the 6 months used in a dot are proportioned according to their share of sales during that period. | Current as of October 7, 2011. All data from RASE Multiple Listing Service. | Powered by 10K Research and Marketing.