

Local Market Update – September 2011

A RESEARCH TOOL PROVIDED BY THE REALTOR® ASSOCIATION OF THE SIOUX EMPIRE, INC.



Hartford

+ 60.0%

Change in
New Listings

+ 300.0%

Change in
Closed Sales

- 5.6%

Change in
Median Sales Price

Minnehaha County, SD

September

Year to Date

	2010	2011	+ / -	2010	2011	+ / -
New Listings	5	8	+ 60.0%	77	68	- 11.7%
Closed Sales	1	4	+ 300.0%	28	29	+ 3.6%
Median Sales Price*	\$149,900	\$141,500	- 5.6%	\$149,700	\$141,000	- 5.8%
Average Sales Price*	\$149,900	\$144,197	- 3.8%	\$152,211	\$166,656	+ 9.5%
Percent of Original List Price Received*	100.0%	93.5%	- 6.5%	94.6%	94.0%	- 0.6%
Average Days on Market Until Sale	73	70	- 4.1%	98	119	+ 22.2%
Inventory of Homes for Sale	38	36	- 5.3%	--	--	--
Months Supply of Inventory	10.2	12.0	+ 17.7%	--	--	--

* Does not account for list prices from any previous listing contracts or seller concessions. | Activity for one month can sometimes look extreme due to small sample size.

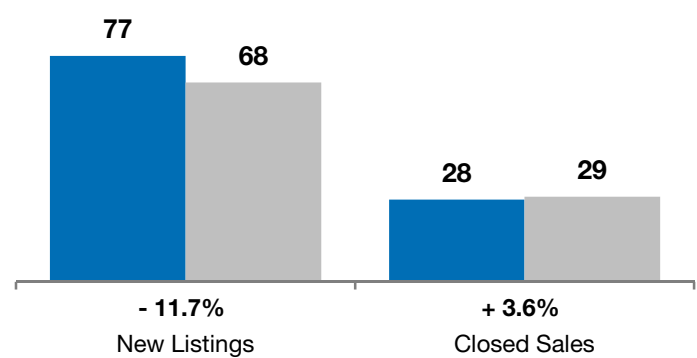
September

■ 2010 ■ 2011

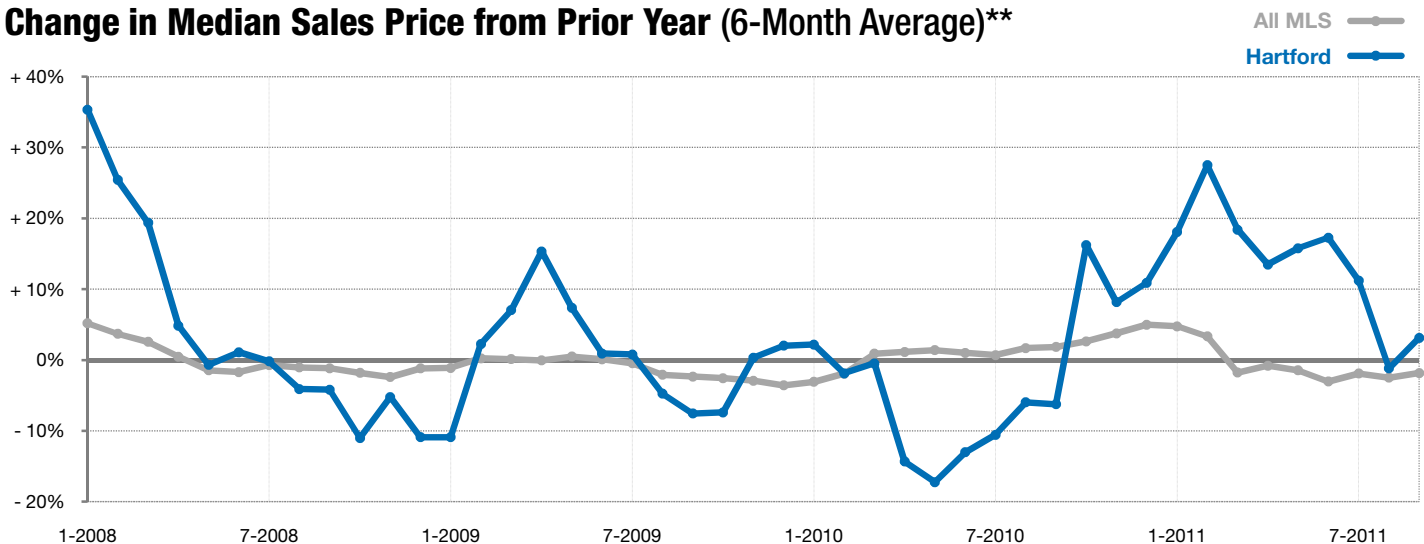


Year to Date

■ 2010 ■ 2011



Change in Median Sales Price from Prior Year (6-Month Average)**



** Each dot represents the change in median sales price from the prior year using a 6-month weighted average. This means that each of the 6 months used in a dot are proportioned according to their share of sales during that period. | Current as of October 7, 2011. All data from RASE Multiple Listing Service. | Powered by 10K Research and Marketing.