

# Local Market Update – September 2011

A RESEARCH TOOL PROVIDED BY THE REALTOR® ASSOCIATION OF THE SIOUX EMPIRE, INC.



## Pipestone

Pipestone County, MN

Change in New Listings	Change in Closed Sales	Change in Median Sales Price
--	--	--

### September

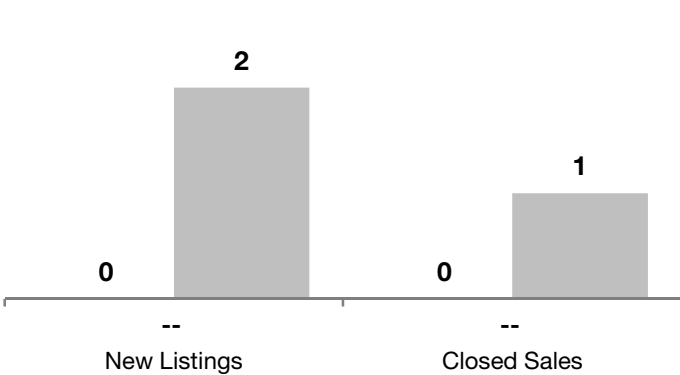
### Year to Date

	2010	2011	+ / -	2010	2011	+ / -
New Listings	0	2	--	19	16	- 15.8%
Closed Sales	0	1	--	6	1	- 83.3%
Median Sales Price*	\$0	<b>\$44,900</b>	--	\$62,500	<b>\$44,900</b>	- 28.2%
Average Sales Price*	\$0	<b>\$44,900</b>	--	\$65,333	<b>\$44,900</b>	- 31.3%
Percent of Original List Price Received*	0.0%	<b>90.7%</b>	--	86.2%	<b>90.7%</b>	+ 5.2%
Average Days on Market Until Sale	0	<b>180</b>	--	189	<b>180</b>	- 4.9%
Inventory of Homes for Sale	12	<b>11</b>	- 8.3%	--	--	--
Months Supply of Inventory	7.2	<b>11.0</b>	+ 52.8%	--	--	--

\* Does not account for list prices from any previous listing contracts or seller concessions. | Activity for one month can sometimes look extreme due to small sample size.

### September

■ 2010 ■ 2011

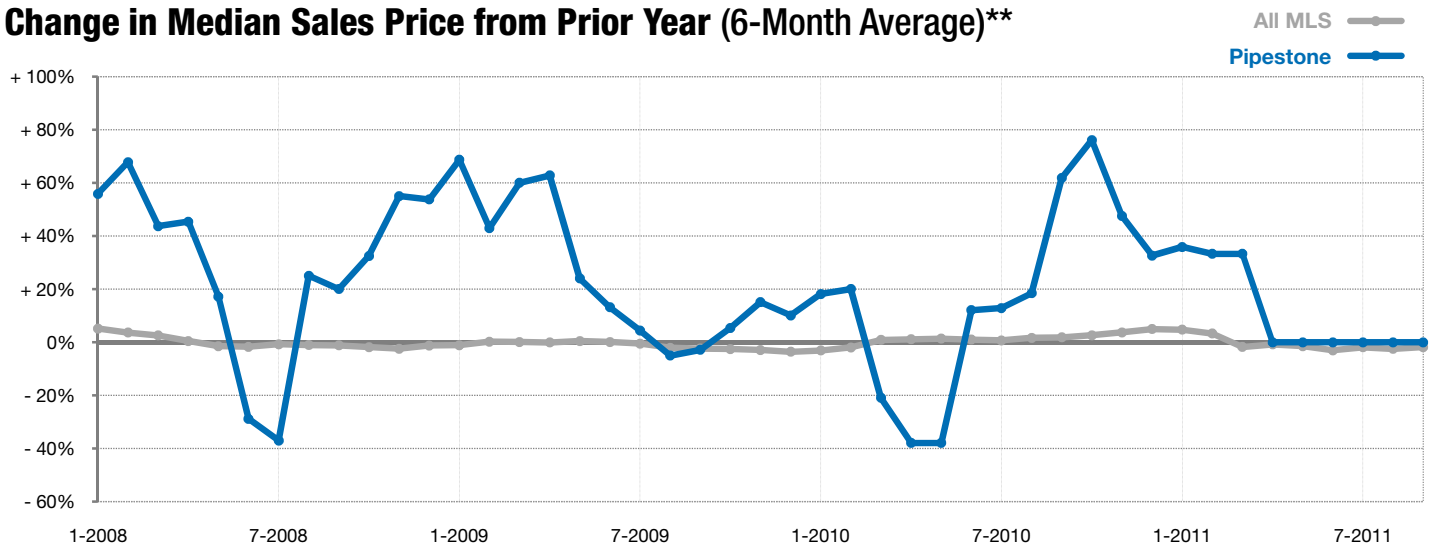


### Year to Date

■ 2010 ■ 2011



### Change in Median Sales Price from Prior Year (6-Month Average)\*\*



\*\* Each dot represents the change in median sales price from the prior year using a 6-month weighted average. This means that each of the 6 months used in a dot are proportioned according to their share of sales during that period. | Current as of October 7, 2011. All data from RASE Multiple Listing Service. | Powered by 10K Research and Marketing.