

Local Market Update – September 2011

A RESEARCH TOOL PROVIDED BY THE REALTOR® ASSOCIATION OF THE SIOUX EMPIRE, INC.



Worthing

+ 33.3%

--

--

Change in
New Listings

Change in
Closed Sales

Change in
Median Sales Price

Lincoln County, SD

September

Year to Date

	2010	2011	+ / -	2010	2011	+ / -
New Listings	3	4	+ 33.3%	18	23	+ 27.8%
Closed Sales	0	2	--	13	12	- 7.7%
Median Sales Price*	\$0	\$110,000	--	\$124,900	\$105,000	- 15.9%
Average Sales Price*	\$0	\$110,000	--	\$131,100	\$106,809	- 18.5%
Percent of Original List Price Received*	0.0%	95.7%	--	93.5%	91.4%	- 2.2%
Average Days on Market Until Sale	0	118	--	81	89	+ 10.3%
Inventory of Homes for Sale	8	10	+ 25.0%	--	--	--
Months Supply of Inventory	3.5	6.4	+ 84.8%	--	--	--

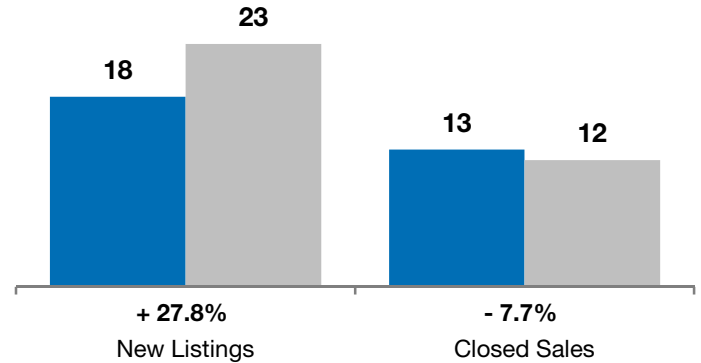
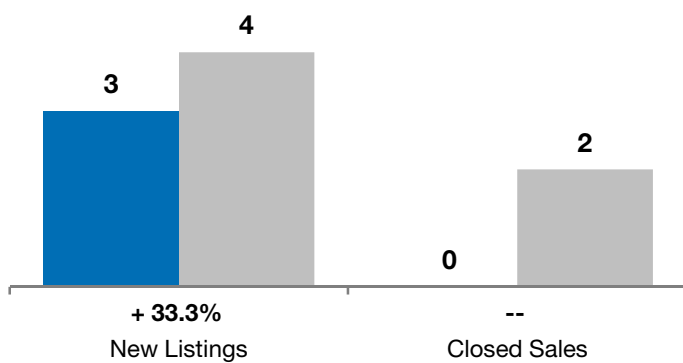
* Does not account for list prices from any previous listing contracts or seller concessions. | Activity for one month can sometimes look extreme due to small sample size.

September

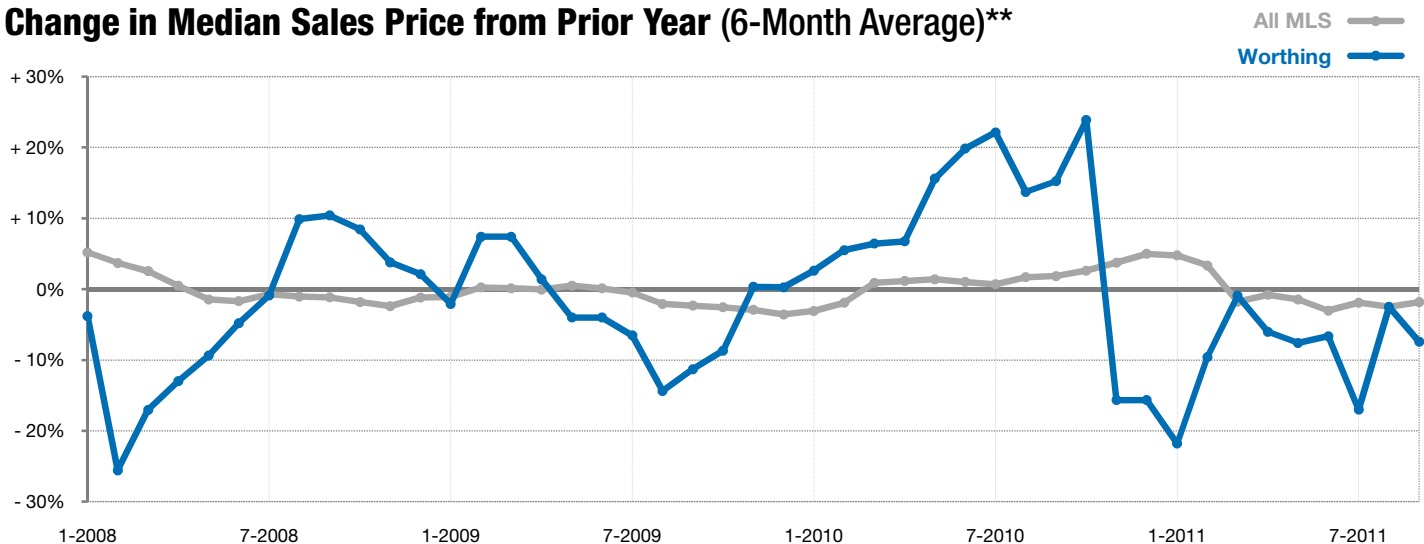
■ 2010 ■ 2011

Year to Date

■ 2010 ■ 2011



Change in Median Sales Price from Prior Year (6-Month Average)**



** Each dot represents the change in median sales price from the prior year using a 6-month weighted average. This means that each of the 6 months used in a dot are proportioned according to their share of sales during that period. | Current as of October 7, 2011. All data from RASE Multiple Listing Service. | Powered by 10K Research and Marketing.