

# Local Market Update – October 2011

A RESEARCH TOOL PROVIDED BY THE REALTOR® ASSOCIATION OF THE SIOUX EMPIRE, INC.



## Brandon

**- 26.1%**

Change in  
New Listings

**- 20.0%**

Change in  
Closed Sales

**- 3.6%**

Change in  
Median Sales Price

Minnehaha County, SD

### October

### Year to Date

	2010	2011	+ / -	2010	2011	+ / -
New Listings	23	17	- 26.1%	245	207	- 15.5%
Closed Sales	10	8	- 20.0%	103	127	+ 23.3%
Median Sales Price*	\$173,250	\$167,000	- 3.6%	\$174,900	\$170,000	- 2.8%
Average Sales Price*	\$195,536	\$180,786	- 7.5%	\$199,594	\$195,278	- 2.2%
Percent of Original List Price Received*	96.1%	95.4%	- 0.7%	96.2%	94.6%	- 1.7%
Average Days on Market Until Sale	100	72	- 28.5%	97	96	- 0.5%
Inventory of Homes for Sale	104	70	- 32.7%	--	--	--
Months Supply of Inventory	10.2	5.4	- 47.4%	--	--	--

\* Does not account for list prices from any previous listing contracts or seller concessions. | Activity for one month can sometimes look extreme due to small sample size.

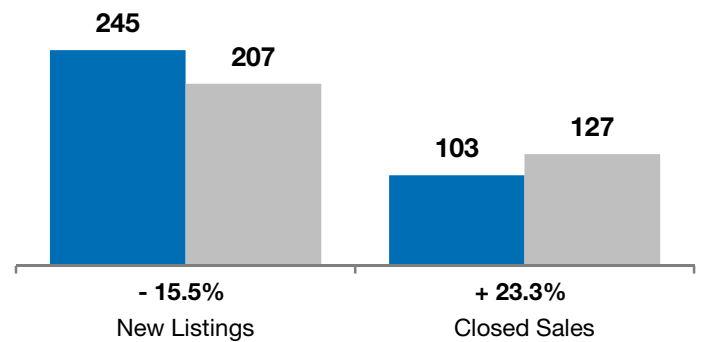
### October

■ 2010 ■ 2011

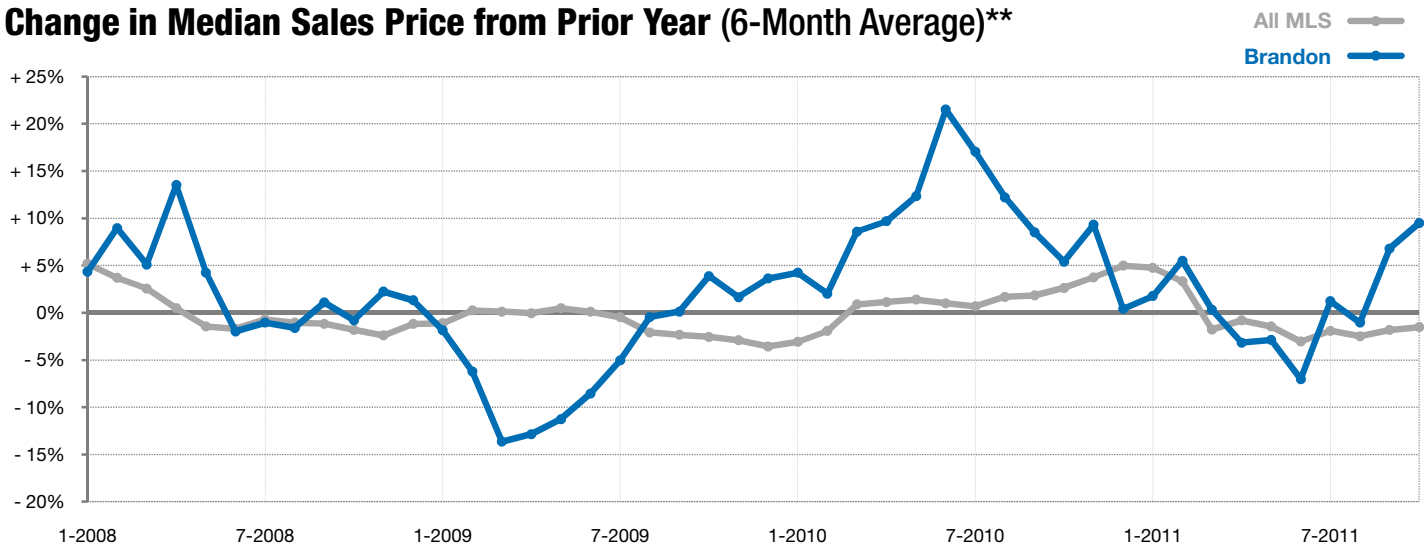


### Year to Date

■ 2010 ■ 2011



### Change in Median Sales Price from Prior Year (6-Month Average)\*\*



\*\* Each dot represents the change in median sales price from the prior year using a 6-month weighted average. This means that each of the 6 months used in a dot are proportioned according to their share of sales during that period. | Current as of November 4, 2011. All data from RASE Multiple Listing Service. | Powered by 10K Research and Marketing.