

# Local Market Update – October 2011

A RESEARCH TOOL PROVIDED BY THE REALTOR® ASSOCIATION OF THE SIOUX EMPIRE, INC.



## Canton

**- 20.0%**

Change in  
New Listings

**- 75.0%**

Change in  
Closed Sales

**- 35.0%**

Change in  
Median Sales Price

Lincoln County, SD

### October

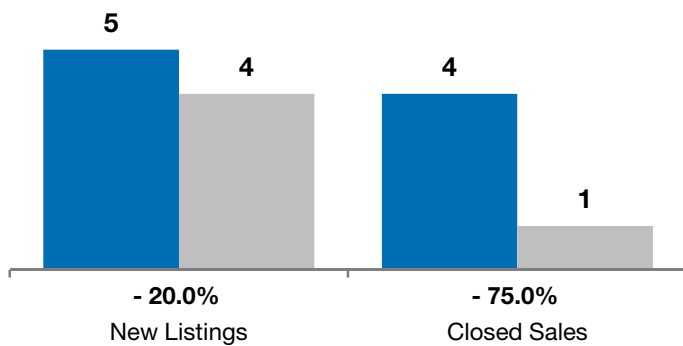
### Year to Date

	2010	2011	+ / -	2010	2011	+ / -
New Listings	5	4	- 20.0%	52	61	+ 17.3%
Closed Sales	4	1	- 75.0%	28	21	- 25.0%
Median Sales Price*	\$134,700	<b>\$87,500</b>	- 35.0%	\$98,500	<b>\$143,000</b>	+ 45.2%
Average Sales Price*	\$133,600	<b>\$87,500</b>	- 34.5%	\$109,105	<b>\$166,531</b>	+ 52.6%
Percent of Original List Price Received*	96.7%	<b>87.9%</b>	- 9.0%	93.9%	<b>93.9%</b>	+ 0.1%
Average Days on Market Until Sale	46	<b>97</b>	+ 113.2%	89	<b>135</b>	+ 51.0%
Inventory of Homes for Sale	23	<b>32</b>	+ 39.1%	--	--	--
Months Supply of Inventory	8.4	<b>11.4</b>	+ 36.6%	--	--	--

\* Does not account for list prices from any previous listing contracts or seller concessions. | Activity for one month can sometimes look extreme due to small sample size.

### October

■ 2010 ■ 2011

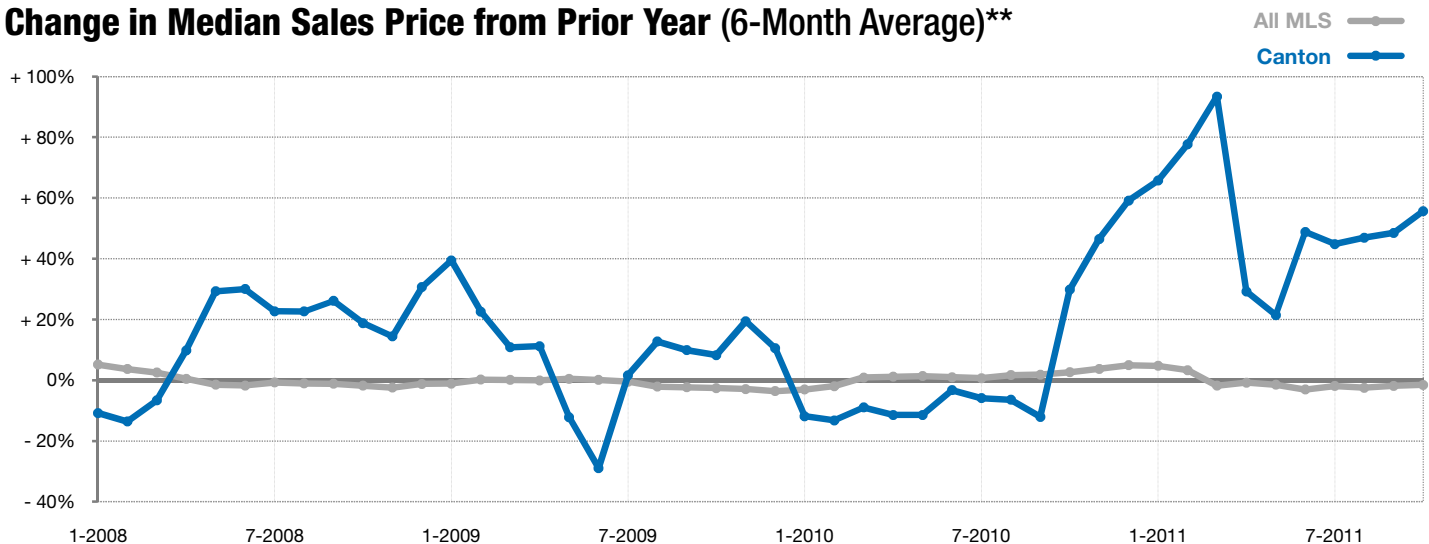


### Year to Date

■ 2010 ■ 2011



### Change in Median Sales Price from Prior Year (6-Month Average)\*\*



\*\* Each dot represents the change in median sales price from the prior year using a 6-month weighted average. This means that each of the 6 months used in a dot are proportioned according to their share of sales during that period. | Current as of November 4, 2011. All data from RASE Multiple Listing Service. | Powered by 10K Research and Marketing.