

# Local Market Update – October 2011

A RESEARCH TOOL PROVIDED BY THE REALTOR® ASSOCIATION OF THE SIOUX EMPIRE, INC.



## Dell Rapids

**- 71.4%**

Change in  
New Listings

**0.0%**

Change in  
Closed Sales

**- 12.6%**

Change in  
Median Sales Price

Minnehaha County, SD

**October**

**Year to Date**

	2010	2011	+ / -	2010	2011	+ / -
New Listings	7	2	- 71.4%	85	84	- 1.2%
Closed Sales	4	4	0.0%	41	41	0.0%
Median Sales Price*	\$135,500	<b>\$118,450</b>	- 12.6%	\$120,000	<b>\$136,000</b>	+ 13.3%
Average Sales Price*	\$145,250	<b>\$128,475</b>	- 11.5%	\$140,578	<b>\$164,107</b>	+ 16.7%
Percent of Original List Price Received*	93.8%	<b>91.2%</b>	- 2.7%	92.2%	<b>92.8%</b>	+ 0.7%
Average Days on Market Until Sale	68	<b>128</b>	+ 88.9%	117	<b>96</b>	- 18.5%
Inventory of Homes for Sale	46	<b>43</b>	- 6.5%	--	--	--
Months Supply of Inventory	9.5	<b>11.2</b>	+ 17.9%	--	--	--

\* Does not account for list prices from any previous listing contracts or seller concessions. | Activity for one month can sometimes look extreme due to small sample size.

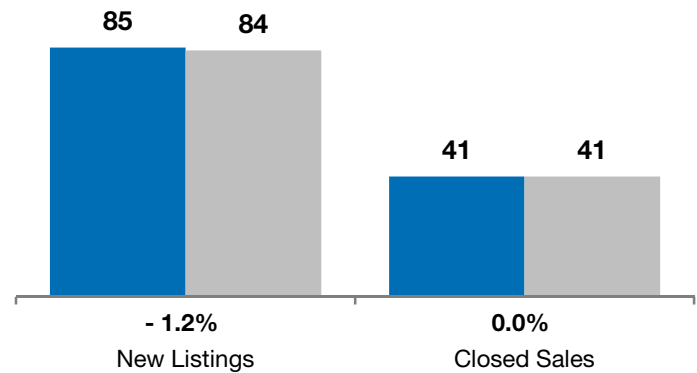
### October

■ 2010 ■ 2011

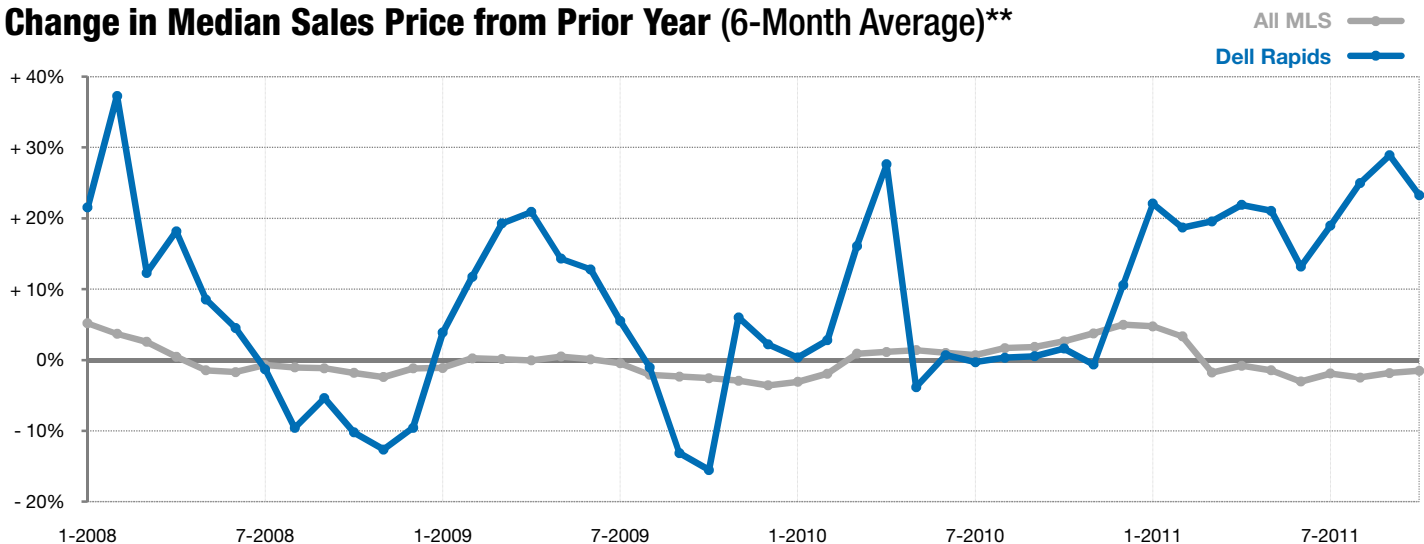


### Year to Date

■ 2010 ■ 2011



### Change in Median Sales Price from Prior Year (6-Month Average)\*\*



\*\* Each dot represents the change in median sales price from the prior year using a 6-month weighted average. This means that each of the 6 months used in a dot are proportioned according to their share of sales during that period. | Current as of November 4, 2011. All data from RASE Multiple Listing Service. | Powered by 10K Research and Marketing.