

# Local Market Update – October 2011

A RESEARCH TOOL PROVIDED BY THE REALTOR® ASSOCIATION OF THE SIOUX EMPIRE, INC.



## Garretson

**+ 33.3%**      **- 100.0%**      **- 100.0%**

Change in  
New Listings

Change in  
Closed Sales

Change in  
Median Sales Price

Minnehaha County, SD

**October**

**Year to Date**

	2010	2011	+ / -	2010	2011	+ / -
New Listings	3	4	+ 33.3%	39	38	- 2.6%
Closed Sales	2	0	- 100.0%	17	14	- 17.6%
Median Sales Price*	\$409,286	\$0	- 100.0%	\$89,000	\$156,250	+ 75.6%
Average Sales Price*	\$409,286	\$0	- 100.0%	\$164,269	\$171,793	+ 4.6%
Percent of Original List Price Received*	92.7%	0.0%	- 100.0%	91.2%	94.4%	+ 3.5%
Average Days on Market Until Sale	124	0	- 100.0%	84	81	- 4.2%
Inventory of Homes for Sale	16	18	+ 12.5%	--	--	--
Months Supply of Inventory	8.5	7.0	- 16.8%	--	--	--

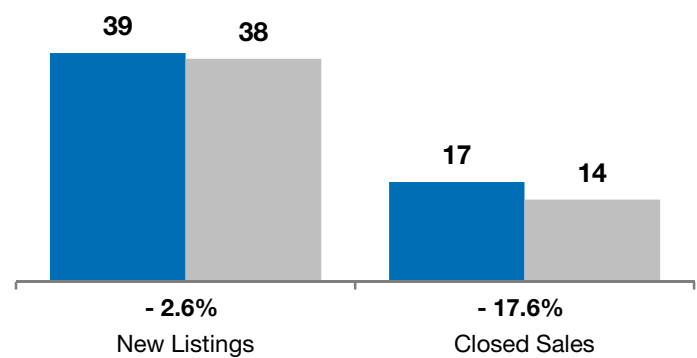
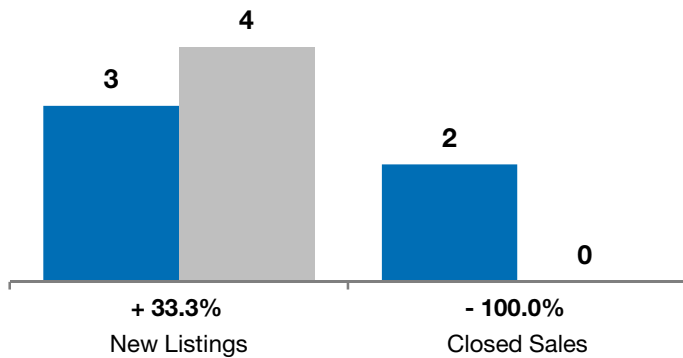
\* Does not account for list prices from any previous listing contracts or seller concessions. | Activity for one month can sometimes look extreme due to small sample size.

### October

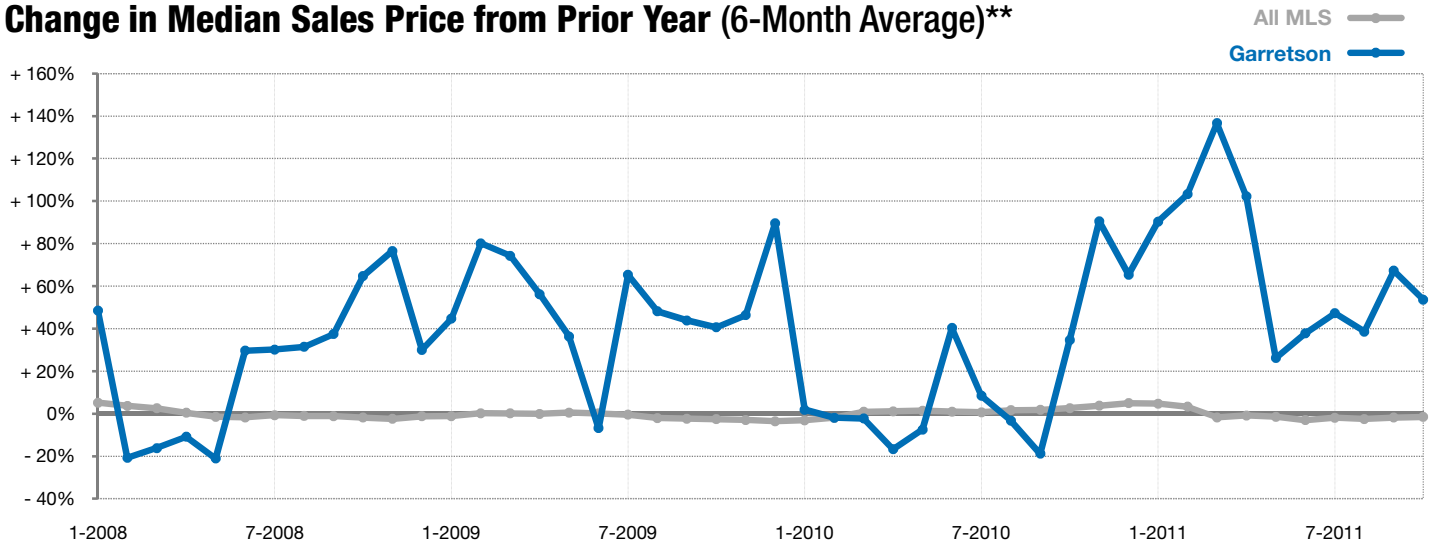
■ 2010 ■ 2011

### Year to Date

■ 2010 ■ 2011



### Change in Median Sales Price from Prior Year (6-Month Average)\*\*



\*\* Each dot represents the change in median sales price from the prior year using a 6-month weighted average. This means that each of the 6 months used in a dot are proportioned according to their share of sales during that period. | Current as of November 4, 2011. All data from RASE Multiple Listing Service. | Powered by 10K Research and Marketing.