

Local Market Update – October 2011

A RESEARCH TOOL PROVIDED BY THE REALTOR® ASSOCIATION OF THE SIOUX EMPIRE, INC.



Hartford

0.0%

Change in
New Listings

+ 66.7%

Change in
Closed Sales

- 11.2%

Change in
Median Sales Price

Minnehaha County, SD

October

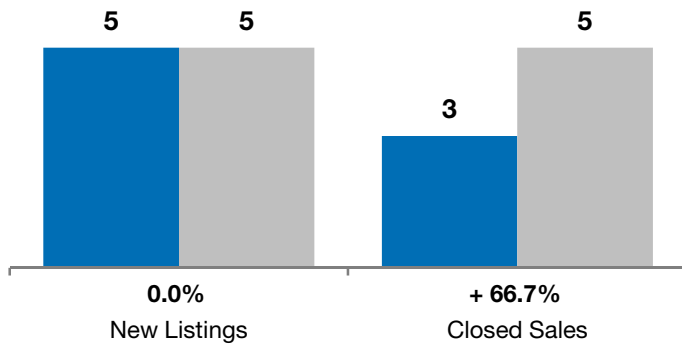
Year to Date

	2010	2011	+ / -	2010	2011	+ / -
New Listings	5	5	0.0%	82	73	- 11.0%
Closed Sales	3	5	+ 66.7%	31	34	+ 9.7%
Median Sales Price*	\$205,000	\$182,106	- 11.2%	\$149,900	\$147,500	- 1.6%
Average Sales Price*	\$273,333	\$188,990	- 30.9%	\$163,932	\$169,364	+ 3.3%
Percent of Original List Price Received*	92.7%	95.9%	+ 3.5%	94.4%	94.2%	- 0.2%
Average Days on Market Until Sale	100	119	+ 19.0%	98	119	+ 21.8%
Inventory of Homes for Sale	34	34	0.0%	--	--	--
Months Supply of Inventory	9.1	11.0	+ 20.9%	--	--	--

* Does not account for list prices from any previous listing contracts or seller concessions. | Activity for one month can sometimes look extreme due to small sample size.

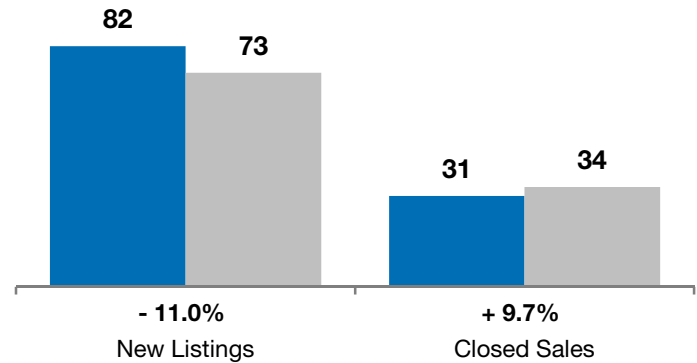
October

■ 2010 ■ 2011

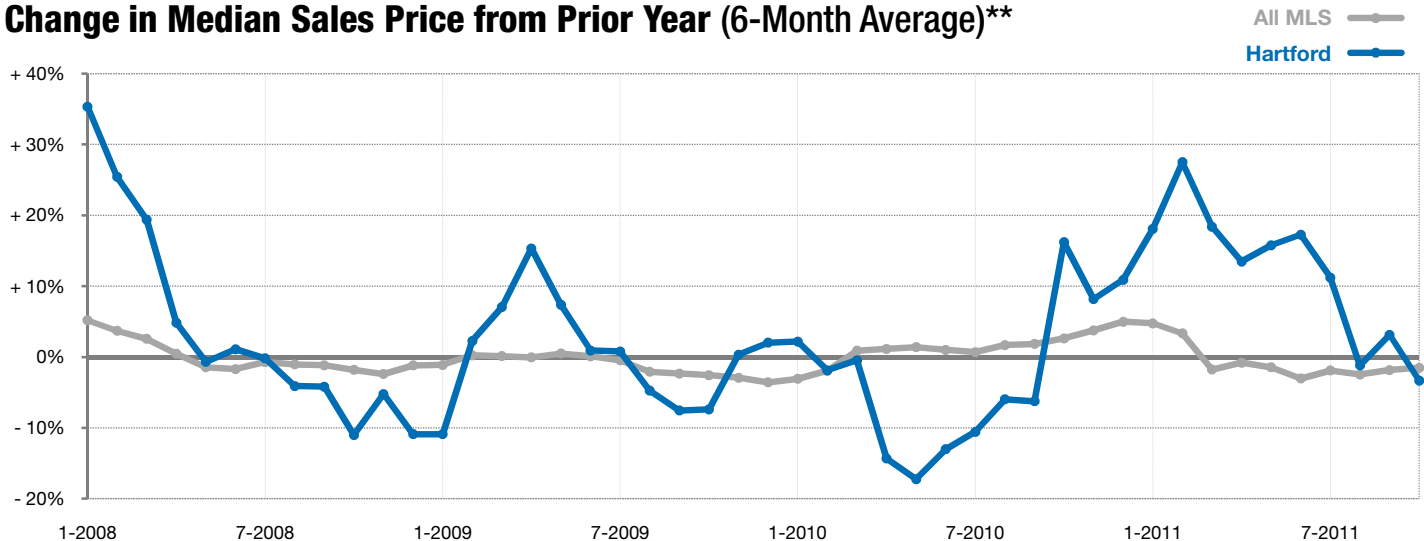


Year to Date

■ 2010 ■ 2011



Change in Median Sales Price from Prior Year (6-Month Average)**



** Each dot represents the change in median sales price from the prior year using a 6-month weighted average. This means that each of the 6 months used in a dot are proportioned according to their share of sales during that period. | Current as of November 4, 2011. All data from RASE Multiple Listing Service. | Powered by 10K Research and Marketing.