

Local Market Update – October 2011

A RESEARCH TOOL PROVIDED BY THE REALTOR® ASSOCIATION OF THE SIOUX EMPIRE, INC.



Pipestone

--

0.0%

- 72.7%

Change in
New Listings

Change in
Closed Sales

Change in
Median Sales Price

Pipestone County, MN

October

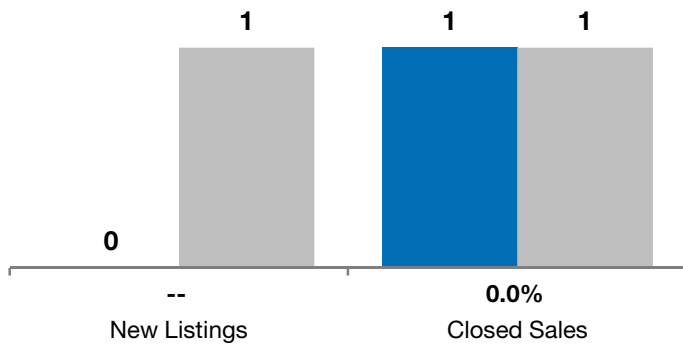
Year to Date

	2010	2011	+ / -	2010	2011	+ / -
New Listings	0	1	--	19	17	- 10.5%
Closed Sales	1	1	0.0%	7	2	- 71.4%
Median Sales Price*	\$232,000	\$63,350	- 72.7%	\$89,000	\$54,125	- 39.2%
Average Sales Price*	\$232,000	\$63,350	- 72.7%	\$89,143	\$54,125	- 39.3%
Percent of Original List Price Received*	96.7%	101.4%	+ 4.8%	87.7%	96.0%	+ 9.5%
Average Days on Market Until Sale	156	26	- 83.3%	185	103	- 44.2%
Inventory of Homes for Sale	9	9	0.0%	--	--	--
Months Supply of Inventory	6.0	9.0	+ 50.0%	--	--	--

* Does not account for list prices from any previous listing contracts or seller concessions. | Activity for one month can sometimes look extreme due to small sample size.

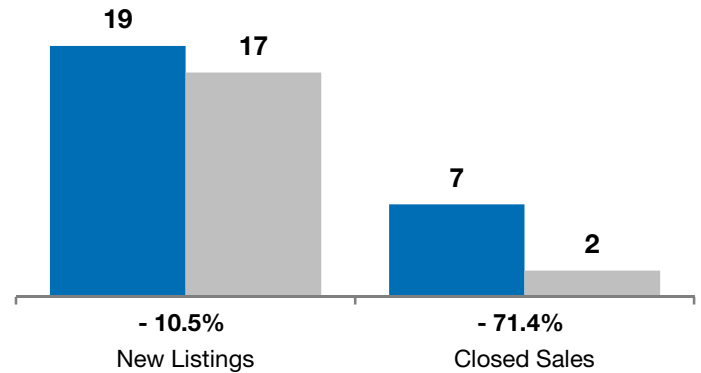
October

■ 2010 ■ 2011

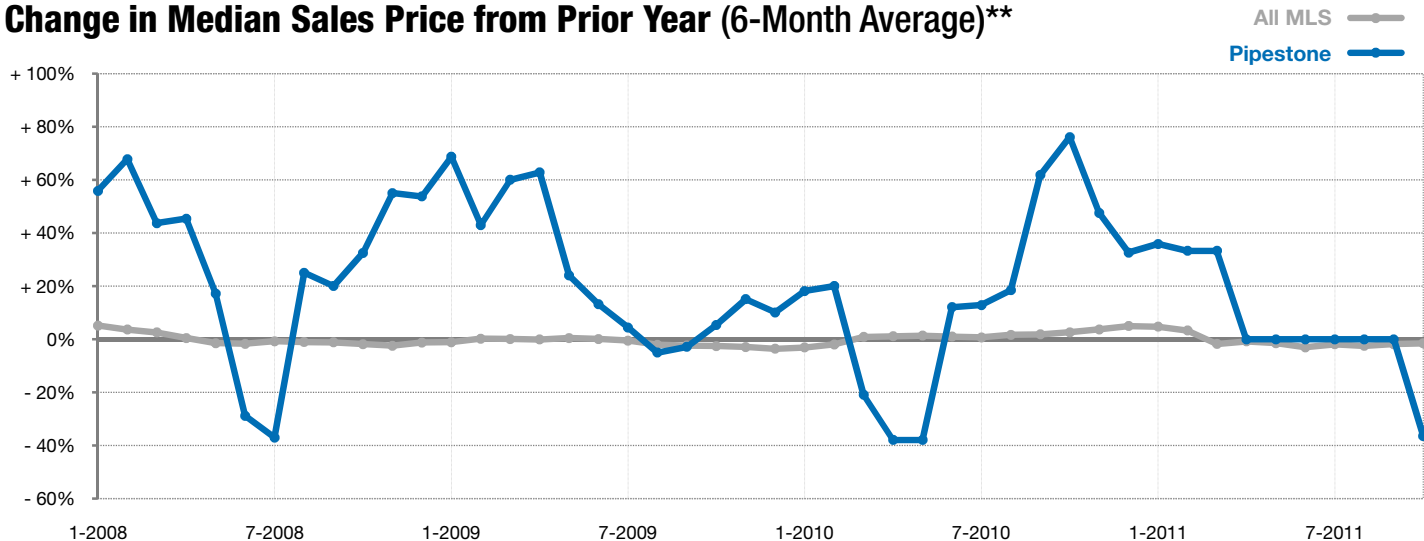


Year to Date

■ 2010 ■ 2011



Change in Median Sales Price from Prior Year (6-Month Average)**



** Each dot represents the change in median sales price from the prior year using a 6-month weighted average. This means that each of the 6 months used in a dot are proportioned according to their share of sales during that period. | Current as of November 4, 2011. All data from RASE Multiple Listing Service. | Powered by 10K Research and Marketing.