

Local Market Update – October 2011

A RESEARCH TOOL PROVIDED BY THE REALTOR® ASSOCIATION OF THE SIOUX EMPIRE, INC.



Valley Springs

- 100.0% **- 50.0%** **- 50.1%**

Change in
New Listings

Change in
Closed Sales

Change in
Median Sales Price

Minnehaha County, SD

October

Year to Date

	2010	2011	+ / -	2010	2011	+ / -
New Listings	2	0	- 100.0%	30	16	- 46.7%
Closed Sales	2	1	- 50.0%	12	13	+ 8.3%
Median Sales Price*	\$244,500	\$122,000	- 50.1%	\$98,000	\$118,000	+ 20.4%
Average Sales Price*	\$244,500	\$122,000	- 50.1%	\$135,333	\$116,531	- 13.9%
Percent of Original List Price Received*	94.3%	93.9%	- 0.4%	94.2%	89.8%	- 4.7%
Average Days on Market Until Sale	110	122	+ 10.9%	110	74	- 33.2%
Inventory of Homes for Sale	16	2	- 87.5%	--	--	--
Months Supply of Inventory	9.0	0.8	- 90.6%	--	--	--

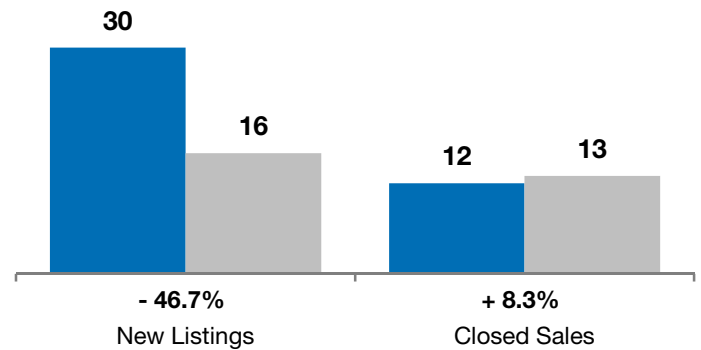
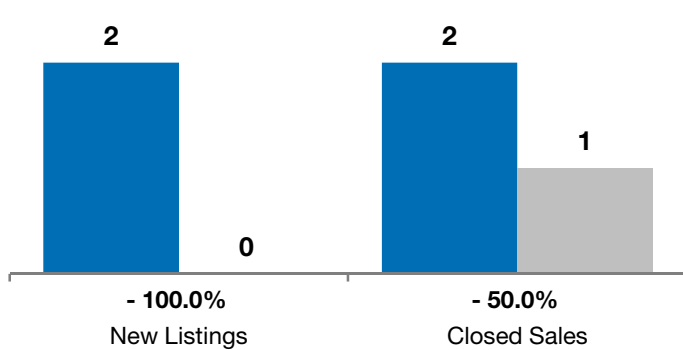
* Does not account for list prices from any previous listing contracts or seller concessions. | Activity for one month can sometimes look extreme due to small sample size.

October

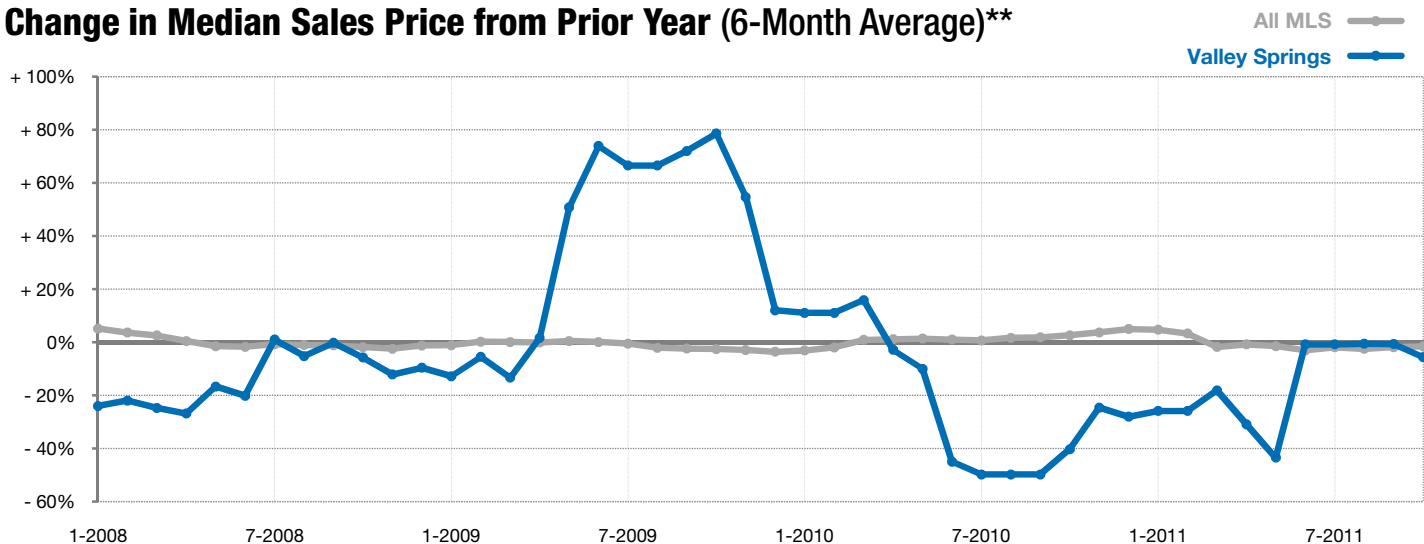
■ 2010 ■ 2011

Year to Date

■ 2010 ■ 2011



Change in Median Sales Price from Prior Year (6-Month Average)**



** Each dot represents the change in median sales price from the prior year using a 6-month weighted average. This means that each of the 6 months used in a dot are proportioned according to their share of sales during that period. | Current as of November 4, 2011. All data from RASE Multiple Listing Service. | Powered by 10K Research and Marketing.