

Local Market Update – November 2011

A RESEARCH TOOL PROVIDED BY THE REALTOR® ASSOCIATION OF THE SIOUX EMPIRE, INC.



Dell Rapids

0.0%

Change in
New Listings

+ 50.0%

Change in
Closed Sales

+ 17.6%

Change in
Median Sales Price

Minnehaha County, SD

November

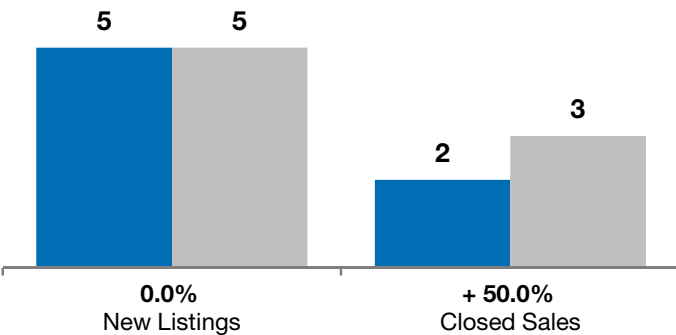
Year to Date

	2010	2011	+ / -	2010	2011	+ / -
New Listings	5	5	0.0%	90	89	- 1.1%
Closed Sales	2	3	+ 50.0%	43	44	+ 2.3%
Median Sales Price*	\$108,000	\$127,000	+ 17.6%	\$120,000	\$134,000	+ 11.7%
Average Sales Price*	\$108,000	\$123,033	+ 13.9%	\$139,063	\$161,242	+ 15.9%
Percent of Original List Price Received*	88.5%	95.3%	+ 7.6%	92.0%	93.0%	+ 1.0%
Average Days on Market Until Sale	218	76	- 64.9%	122	94	- 22.7%
Inventory of Homes for Sale	45	40	- 11.1%	--	--	--
Months Supply of Inventory	10.2	9.8	- 3.9%	--	--	--

* Does not account for list prices from any previous listing contracts or seller concessions. | Activity for one month can sometimes look extreme due to small sample size.

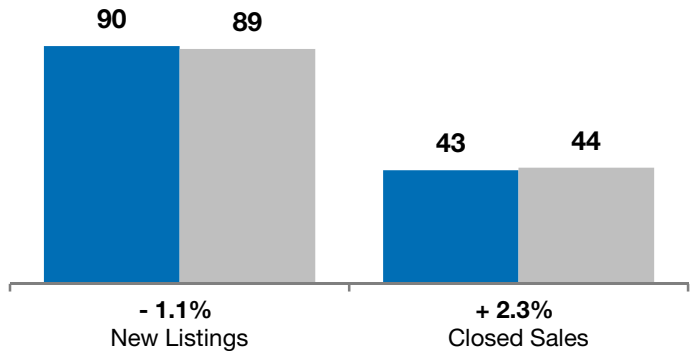
November

■ 2010 ■ 2011

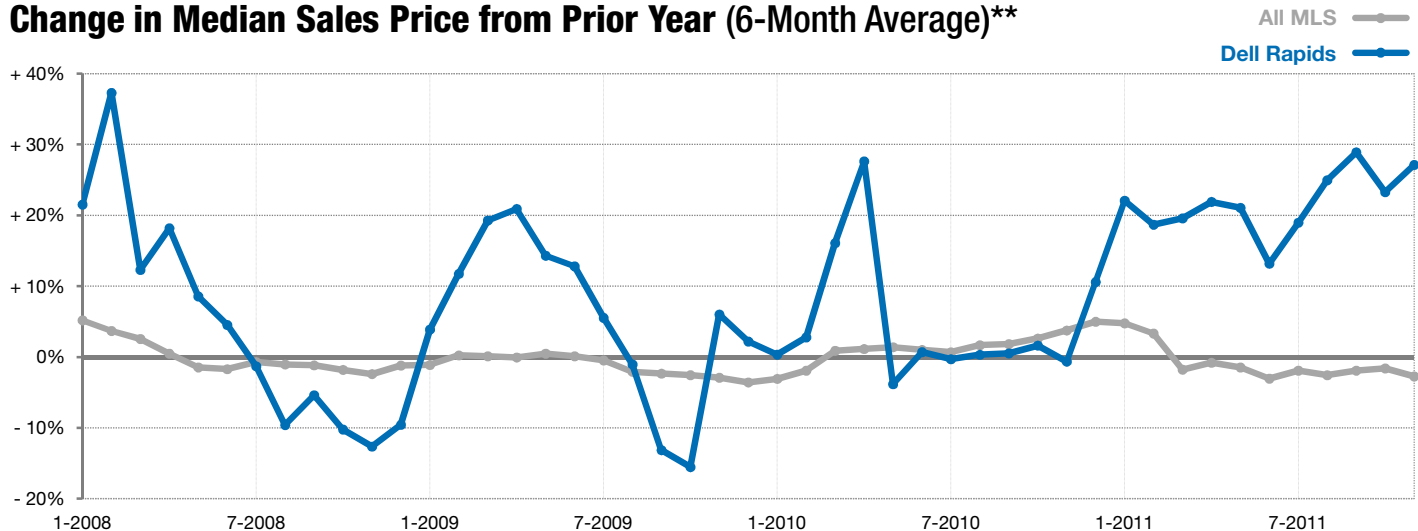


Year to Date

■ 2010 ■ 2011



Change in Median Sales Price from Prior Year (6-Month Average)**



** Each dot represents the change in median sales price from the prior year using a 6-month weighted average. This means that each of the 6 months used in a dot are proportioned according to their share of sales during that period. | Current as of December 6, 2011. All data from RASE Multiple Listing Service. | Powered by 10K Research and Marketing.