

# Local Market Update – January 2012

A RESEARCH TOOL PROVIDED BY THE REALTOR® ASSOCIATION OF THE SIOUX EMPIRE, INC.



## Dell Rapids

**- 50.0%**

Change in  
New Listings

**- 75.0%**

Change in  
Closed Sales

**+ 158.8%**

Change in  
Median Sales Price

Minnehaha County, SD

**January**

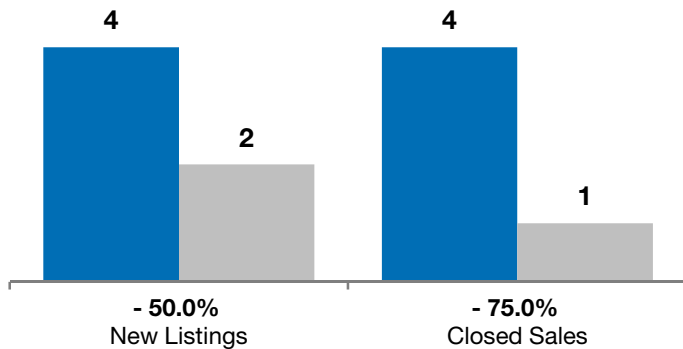
**Year to Date**

	2011	2012	+ / -	2011	2012	+ / -
New Listings	4	2	- 50.0%	4	2	- 50.0%
Closed Sales	4	1	- 75.0%	4	1	- 75.0%
Median Sales Price*	\$127,500	<b>\$330,000</b>	+ 158.8%	\$127,500	<b>\$330,000</b>	+ 158.8%
Average Sales Price*	\$137,500	<b>\$330,000</b>	+ 140.0%	\$137,500	<b>\$330,000</b>	+ 140.0%
Percent of Original List Price Received*	93.6%	<b>91.7%</b>	- 2.1%	93.6%	<b>91.7%</b>	- 2.1%
Average Days on Market Until Sale	142	<b>251</b>	+ 76.8%	142	<b>251</b>	+ 76.8%
Inventory of Homes for Sale	33	<b>41</b>	+ 24.2%	--	--	--
Months Supply of Inventory	7.8	<b>10.5</b>	+ 34.8%	--	--	--

\* Does not account for list prices from any previous listing contracts or seller concessions. | Activity for one month can sometimes look extreme due to small sample size.

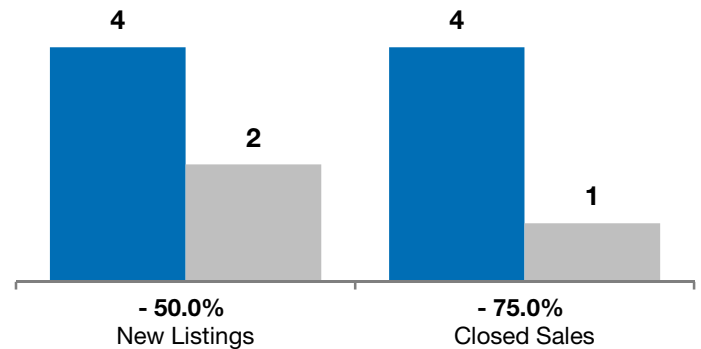
### January

■ 2011 ■ 2012

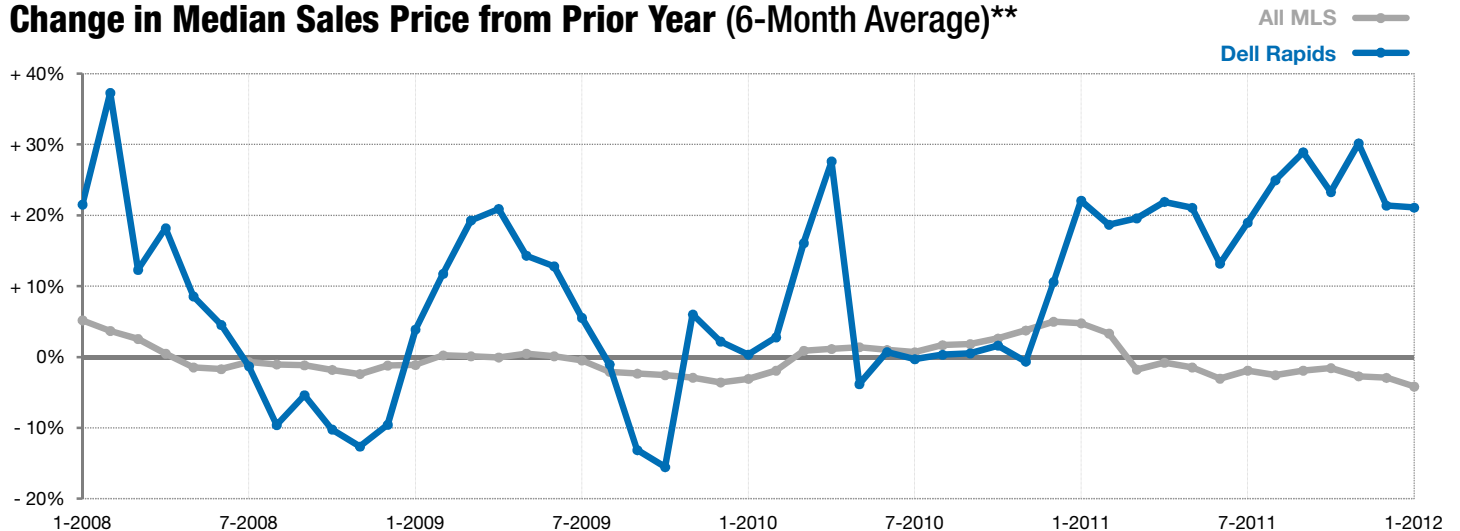


### Year to Date

■ 2011 ■ 2012



### Change in Median Sales Price from Prior Year (6-Month Average)\*\*



\*\* Each dot represents the change in median sales price from the prior year using a 6-month weighted average. This means that each of the 6 months used in a dot are proportioned according to their share of sales during that period. | Current as of February 6, 2012. All data from RASE Multiple Listing Service. | Powered by 10K Research and Marketing.