

Local Market Update – February 2012

A RESEARCH TOOL PROVIDED BY THE REALTOR® ASSOCIATION OF THE SIOUX EMPIRE, INC.



Dell Rapids

- 22.2%

Change in
New Listings

- 25.0%

Change in
Closed Sales

+ 89.0%

Change in
Median Sales Price

Minnehaha County, SD

February

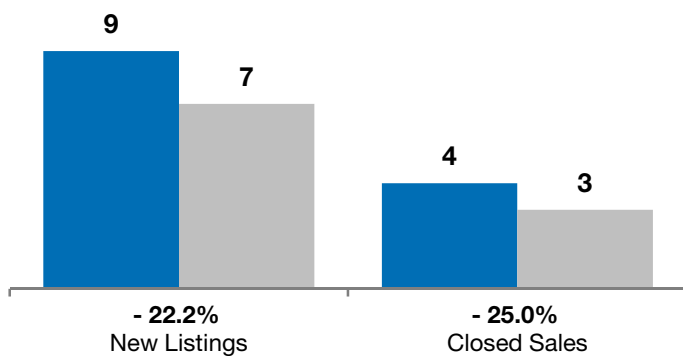
Year to Date

	2011	2012	+ / -	2011	2012	+ / -
New Listings	9	7	- 22.2%	13	9	- 30.8%
Closed Sales	4	3	- 25.0%	8	4	- 50.0%
Median Sales Price*	\$63,500	\$120,000	+ 89.0%	\$125,000	\$173,000	+ 38.4%
Average Sales Price*	\$104,417	\$137,000	+ 31.2%	\$123,321	\$185,250	+ 50.2%
Percent of Original List Price Received*	88.0%	85.7%	- 2.6%	91.2%	87.2%	- 4.4%
Average Days on Market Until Sale	98	106	+ 7.8%	120	142	+ 18.3%
Inventory of Homes for Sale	36	43	+ 19.4%	--	--	--
Months Supply of Inventory	8.3	11.0	+ 32.4%	--	--	--

* Does not account for list prices from any previous listing contracts or seller concessions. | Activity for one month can sometimes look extreme due to small sample size.

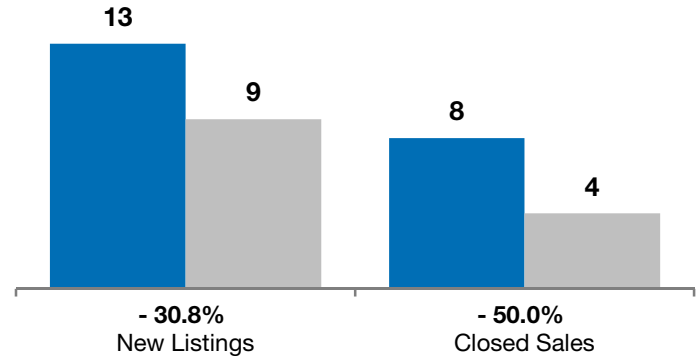
February

■ 2011 ■ 2012

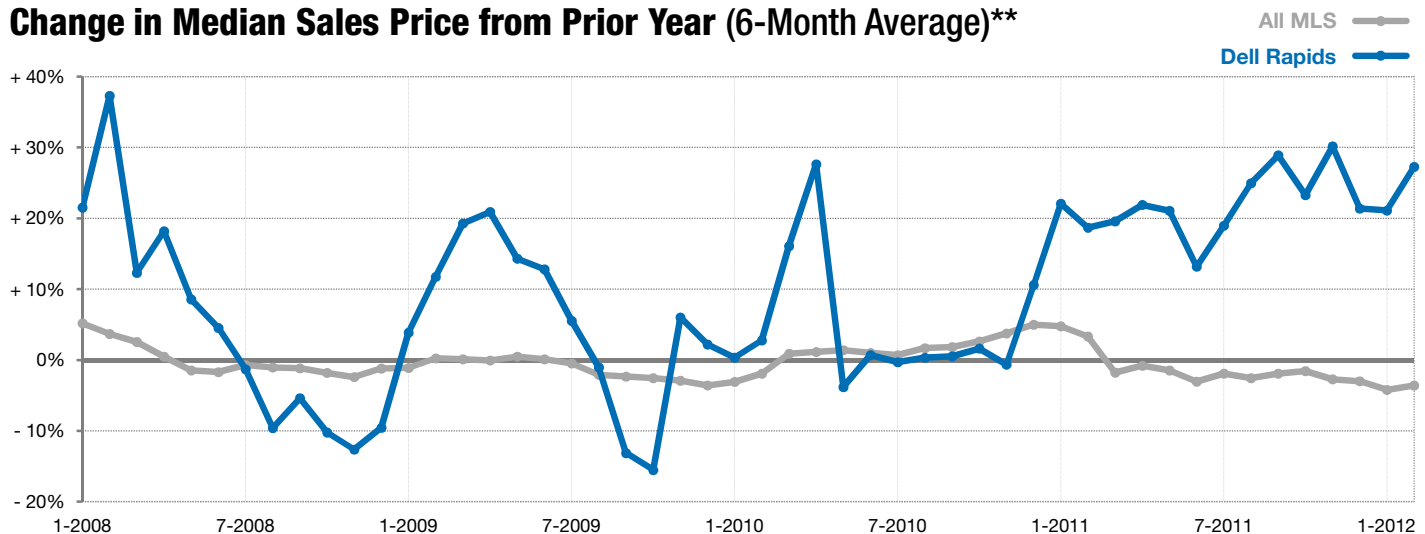


Year to Date

■ 2011 ■ 2012



Change in Median Sales Price from Prior Year (6-Month Average)**



** Each dot represents the change in median sales price from the prior year using a 6-month weighted average. This means that each of the 6 months used in a dot are proportioned according to their share of sales during that period. | Current as of March 7, 2012. All data from RASE Multiple Listing Service. | Powered by 10K Research and Marketing.