

Local Market Update – May 2012

A RESEARCH TOOL PROVIDED BY THE REALTOR® ASSOCIATION OF THE SIOUX EMPIRE, INC.



Dell Rapids

- 35.7% **+ 100.0%** **+ 23.9%**

Change in
New Listings

Change in
Closed Sales

Change in
Median Sales Price

Minnehaha County, SD

May

Year to Date

	2011	2012	+ / -	2011	2012	+ / -
New Listings	14	9	- 35.7%	41	41	0.0%
Closed Sales	4	8	+ 100.0%	19	22	+ 15.8%
Median Sales Price*	\$125,750	\$155,750	+ 23.9%	\$129,700	\$167,750	+ 29.3%
Average Sales Price*	\$121,250	\$166,715	+ 37.5%	\$146,055	\$185,637	+ 27.1%
Percent of Original List Price Received*	96.6%	95.1%	- 1.5%	93.6%	92.3%	- 1.4%
Average Days on Market Until Sale	112	60	- 46.2%	106	108	+ 1.6%
Inventory of Homes for Sale	41	41	0.0%	--	--	--
Months Supply of Inventory	10.9	8.5	- 22.2%	--	--	--

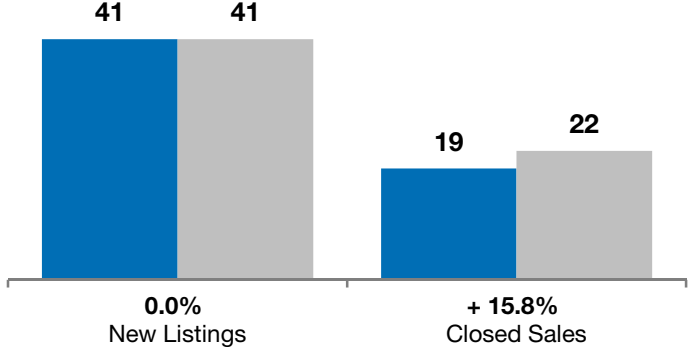
* Does not account for list prices from any previous listing contracts or seller concessions. | Activity for one month can sometimes look extreme due to small sample size.

May

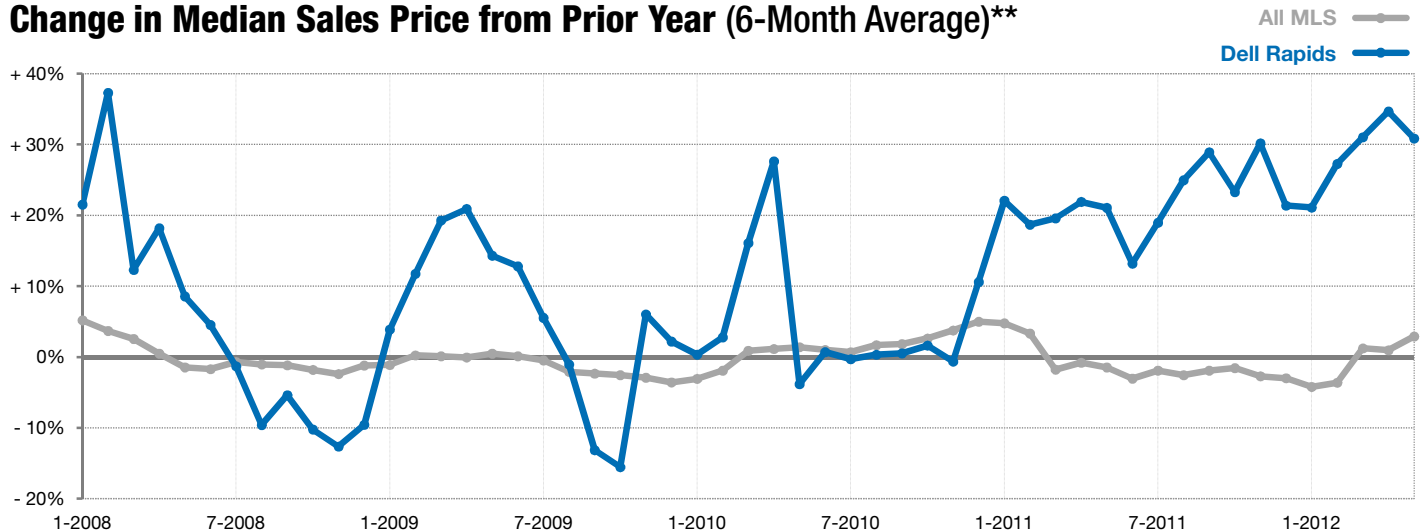
■ 2011 ■ 2012

Year to Date

■ 2011 ■ 2012



Change in Median Sales Price from Prior Year (6-Month Average)**



** Each dot represents the change in median sales price from the prior year using a 6-month weighted average. This means that each of the 6 months used in a dot are proportioned according to their share of sales during that period. | Current as of June 6, 2012. All data from RASE Multiple Listing Service. | Powered by 10K Research and Marketing.