

# Local Market Update – August 2012

A RESEARCH TOOL PROVIDED BY THE REALTOR® ASSOCIATION OF THE SIOUX EMPIRE, INC.



## Dell Rapids

**+ 22.2%**      **+ 100.0%**      **- 15.5%**

Change in  
New Listings

Change in  
Closed Sales

Change in  
Median Sales Price

Minnehaha County, SD

**August**

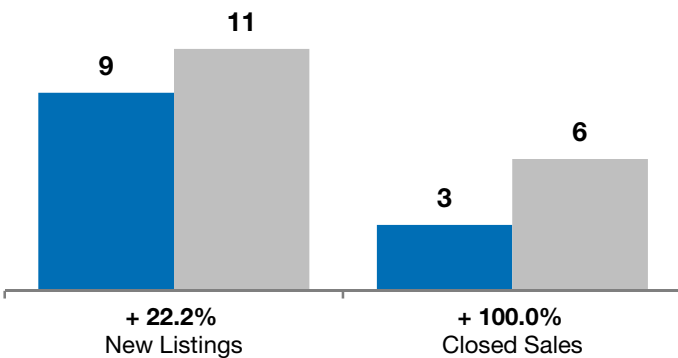
**Year to Date**

	2011	2012	+ / -	2011	2012	+ / -
New Listings	9	11	+ 22.2%	78	78	0.0%
Closed Sales	3	6	+ 100.0%	32	39	+ 21.9%
Median Sales Price*	\$170,000	\$143,700	- 15.5%	\$138,000	\$142,500	+ 3.3%
Average Sales Price*	\$195,000	\$138,150	- 29.2%	\$158,504	\$157,242	- 0.8%
Percent of Original List Price Received*	98.1%	95.0%	- 3.2%	93.2%	93.6%	+ 0.4%
Average Days on Market Until Sale	26	118	+ 355.1%	89	114	+ 28.0%
Inventory of Homes for Sale	61	50	- 18.0%	--	--	--
Months Supply of Inventory	17.0	9.5	- 44.3%	--	--	--

\* Does not account for list prices from any previous listing contracts or seller concessions. | Activity for one month can sometimes look extreme due to small sample size.

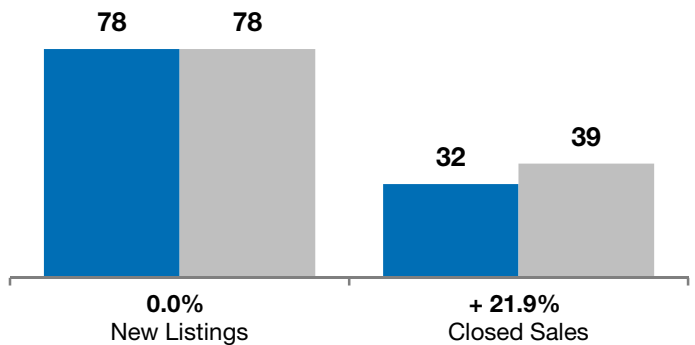
### August

■ 2011 ■ 2012

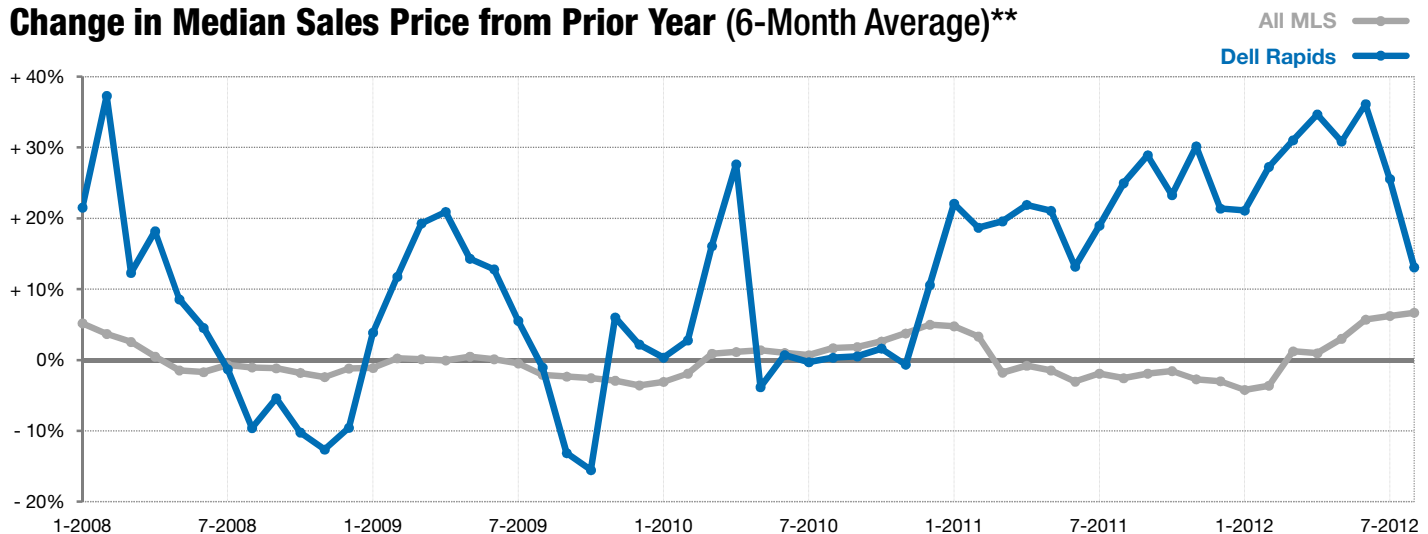


### Year to Date

■ 2011 ■ 2012



### Change in Median Sales Price from Prior Year (6-Month Average)\*\*



\*\* Each dot represents the change in median sales price from the prior year using a 6-month weighted average. This means that each of the 6 months used in a dot are proportioned according to their share of sales during that period. | Current as of September 7, 2012. All data from RASE Multiple Listing Service. | Powered by 10K Research and Marketing.