

Local Market Update – August 2012

A RESEARCH TOOL PROVIDED BY THE REALTOR® ASSOCIATION OF THE SIOUX EMPIRE, INC.



Pipestone

- 66.7%

--

--

Change in
New Listings

Change in
Closed Sales

Change in
Median Sales Price

Pipestone County, MN

August

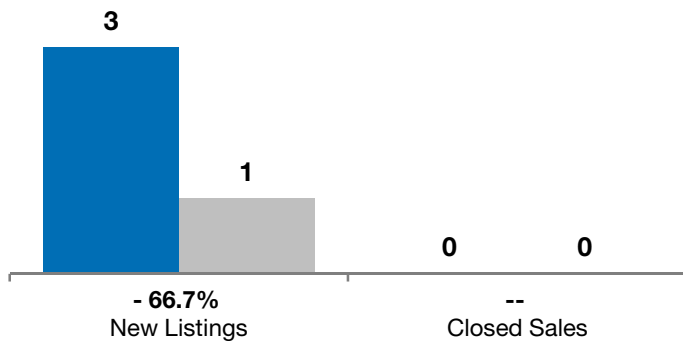
Year to Date

	2011	2012	+ / -	2011	2012	+ / -
New Listings	3	1	- 66.7%	13	14	+ 7.7%
Closed Sales	0	0	--	0	5	--
Median Sales Price*	\$0	\$0	--	\$0	\$99,000	--
Average Sales Price*	\$0	\$0	--	\$0	\$79,180	--
Percent of Original List Price Received*	0.0%	0.0%	--	0.0%	89.0%	--
Average Days on Market Until Sale	0	0	--	0	63	--
Inventory of Homes for Sale	8	11	+ 37.5%	--	--	--
Months Supply of Inventory	8.0	9.4	+ 17.9%	--	--	--

* Does not account for list prices from any previous listing contracts or seller concessions. | Activity for one month can sometimes look extreme due to small sample size.

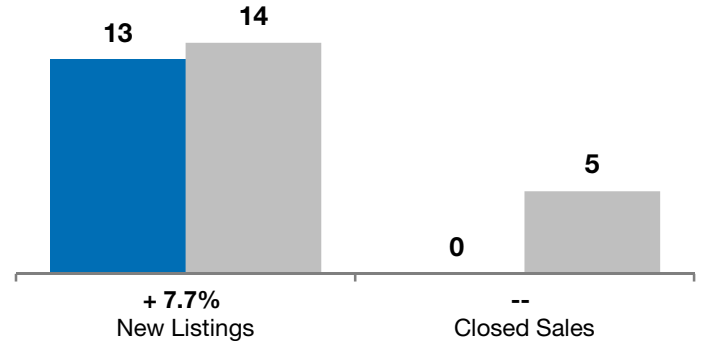
August

■ 2011 ■ 2012

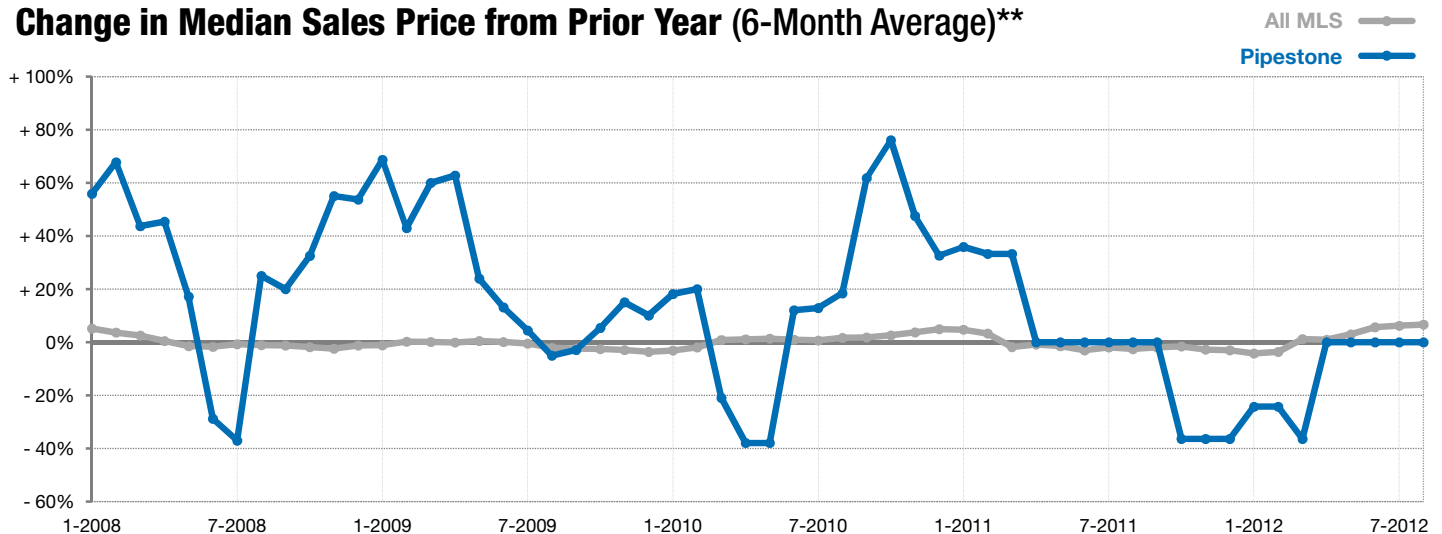


Year to Date

■ 2011 ■ 2012



Change in Median Sales Price from Prior Year (6-Month Average)**



** Each dot represents the change in median sales price from the prior year using a 6-month weighted average. This means that each of the 6 months used in a dot are proportioned according to their share of sales during that period. | Current as of September 7, 2012. All data from RASE Multiple Listing Service. | Powered by 10K Research and Marketing.