

Local Market Update – December 2012

A RESEARCH TOOL PROVIDED BY THE REALTOR® ASSOCIATION OF THE SIOUX EMPIRE, INC.



Canton

Lincoln County, SD

+ 25.0% **+ 100.0%** **- 63.4%**

Change in
New Listings

Change in
Closed Sales

Change in
Median Sales Price

	December			Year to Date		
	2011	2012	+ / -	2011	2012	+ / -
New Listings	4	5	+ 25.0%	68	87	+ 27.9%
Closed Sales	2	4	+ 100.0%	23	37	+ 60.9%
Median Sales Price*	\$155,750	\$57,000	- 63.4%	\$143,000	\$119,500	- 16.4%
Average Sales Price*	\$155,750	\$109,000	- 30.0%	\$165,594	\$128,807	- 22.2%
Percent of Original List Price Received*	93.5%	86.8%	- 7.2%	93.9%	89.6%	- 4.6%
Average Days on Market Until Sale	119	129	+ 8.0%	133	100	- 25.1%
Inventory of Homes for Sale	25	33	+ 32.0%	--	--	--
Months Supply of Inventory	10.2	10.4	+ 1.4%	--	--	--

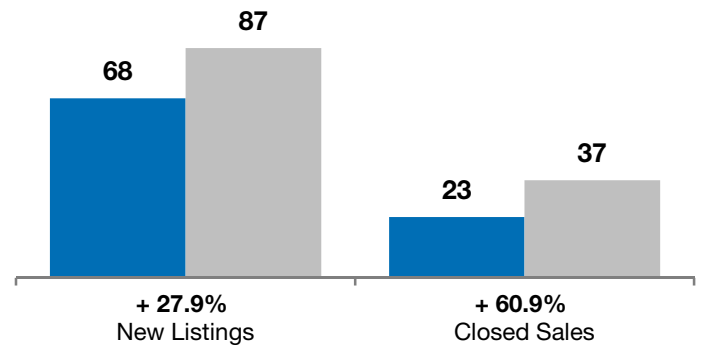
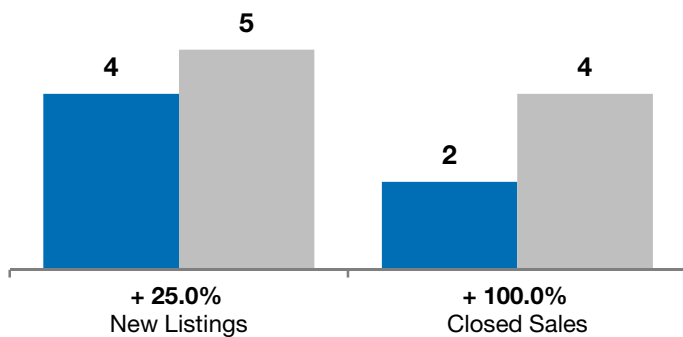
* Does not account for list prices from any previous listing contracts or seller concessions. | Activity for one month can sometimes look extreme due to small sample size.

December

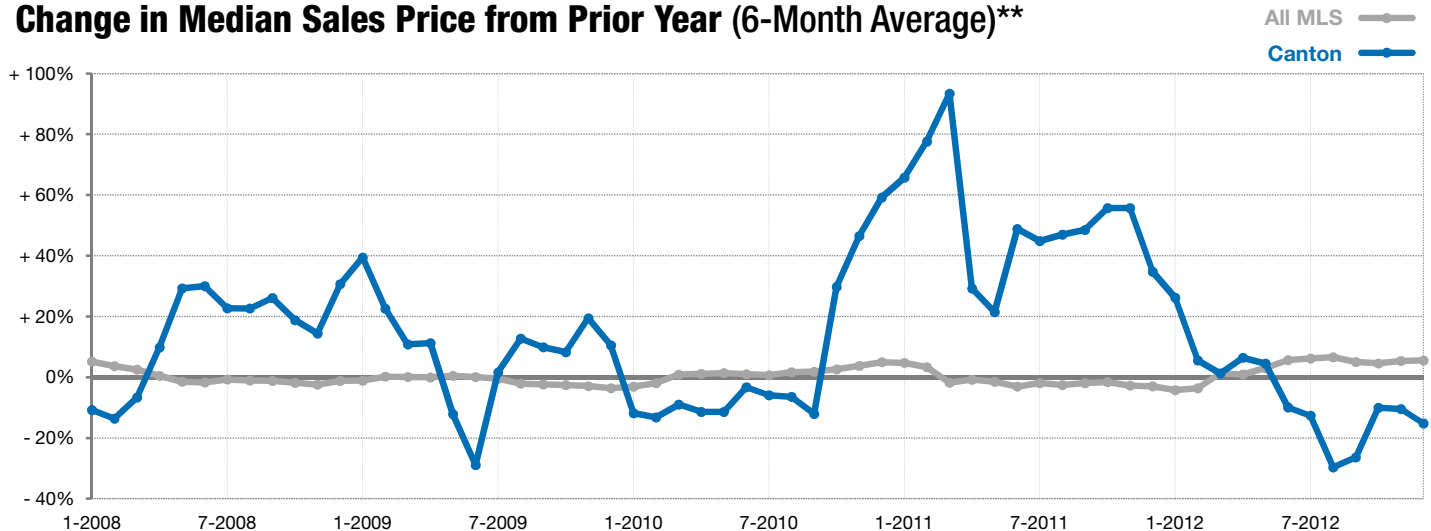
■ 2011 ■ 2012

Year to Date

■ 2011 ■ 2012



Change in Median Sales Price from Prior Year (6-Month Average)**



** Each dot represents the change in median sales price from the prior year using a 6-month weighted average. This means that each of the 6 months used in a dot are proportioned according to their share of sales during that period. | Current as of January 7, 2013. All data from RASE Multiple Listing Service. | Powered by 10K Research and Marketing.